

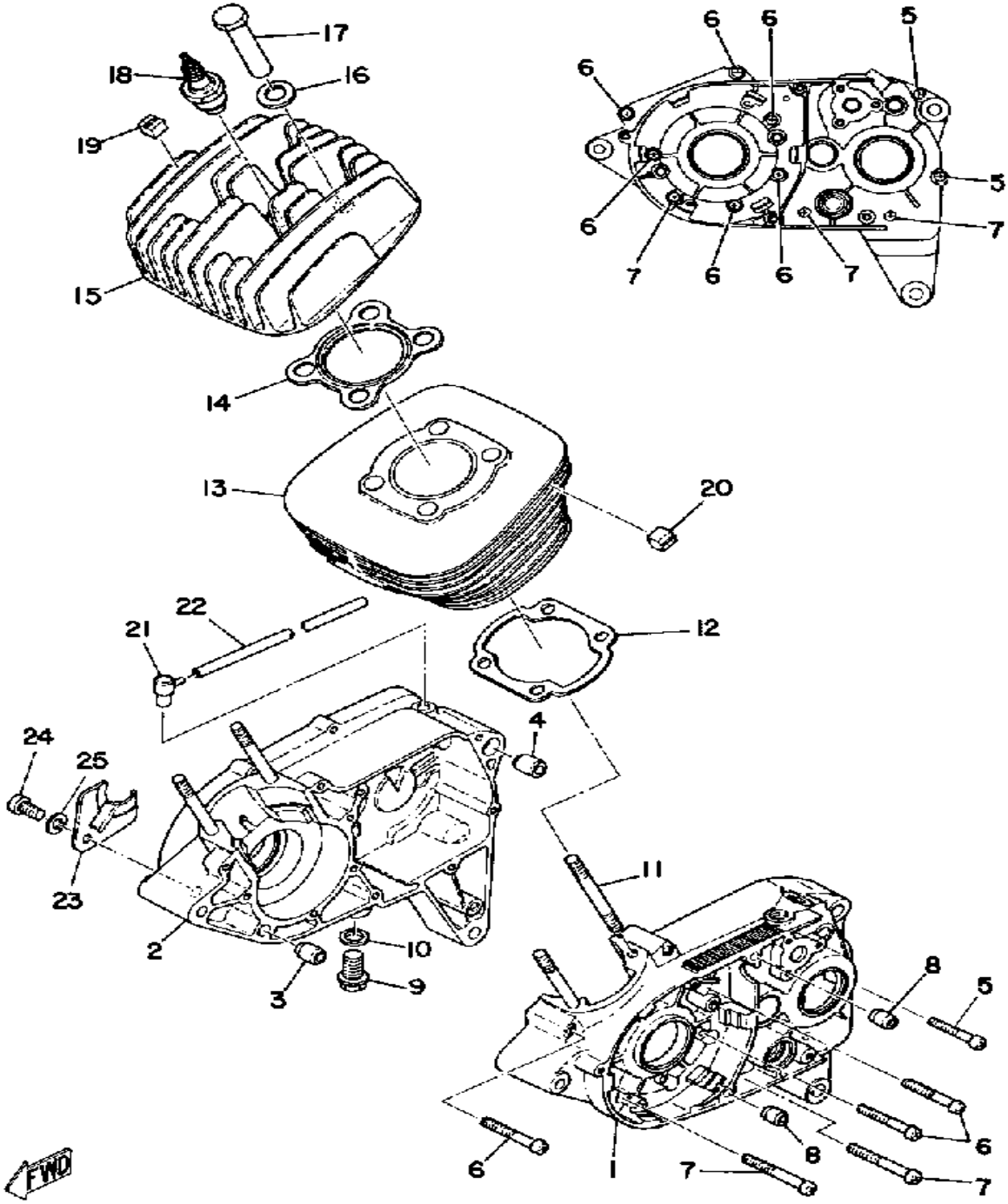
YAMAHA

GENUINE

PARTS CATALOGUE

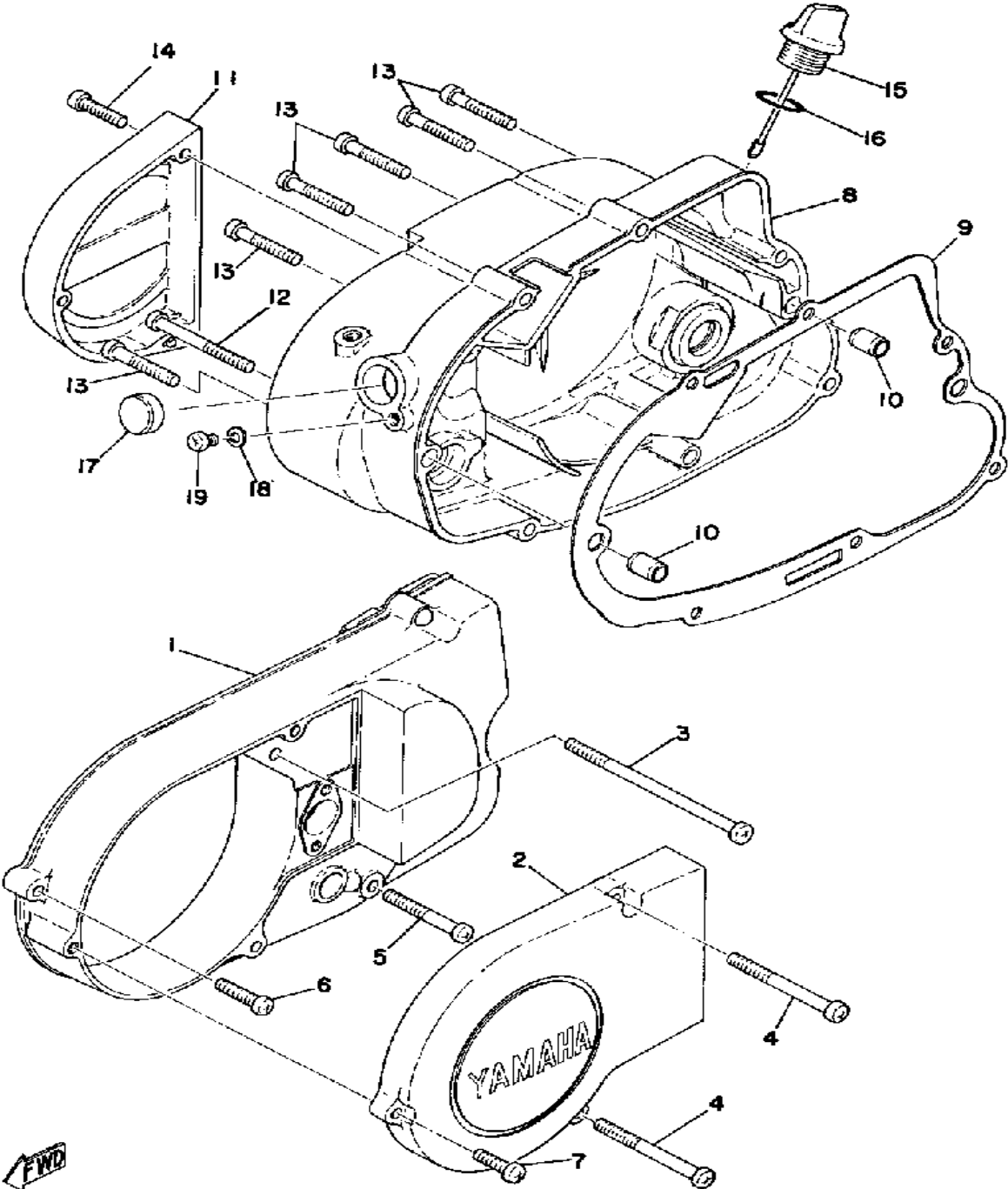
MOTORCYCLE

CRANKCASE - CYLINDER



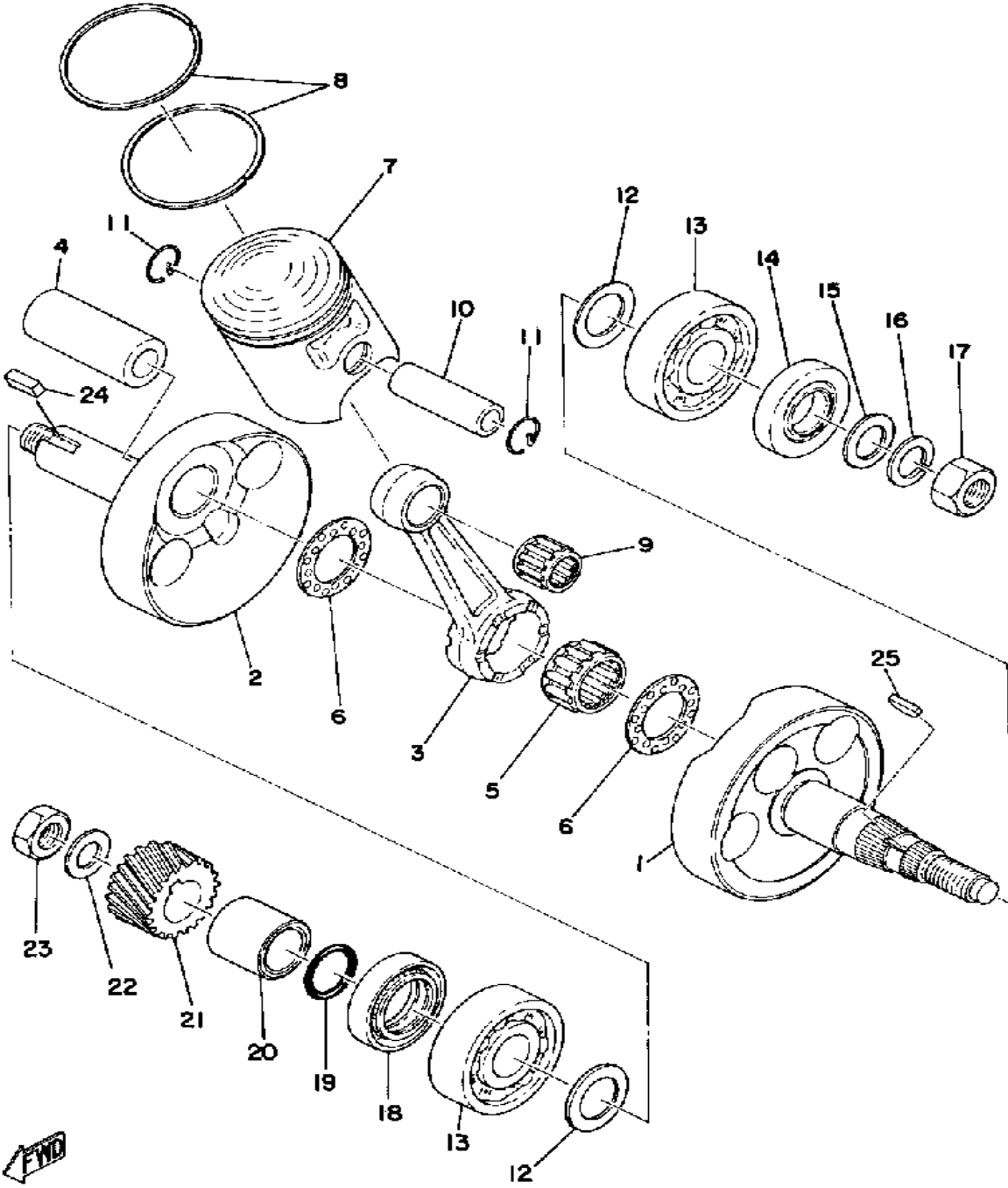
Ref. No.	Part Number	Description	Qty	Remarks
1	(276-15111-00-00)	CRANKCASE 1	1	
2	(276-15121-03-00)	CRANKCASE 2	1	
3	99510-12016-00	PIN, DOWEL	1	
4	99530-14016-00	PIN, DOWEL	1	
5	98580-06040-00	SCREW, pan head (92501-06040-00)	2	
6	98580-06545-00	SCREW PAN HEAD (92503-06045)	6	
7	98580-06055-00	SCREW, pan head (92501-06065-00)	3	
8	99530-10014-00	PIN, DOWEL	2	
9	90340-12005-00	PLUG, DRAIN	1	
10	90430-12207-00	GASKET	1	
11	90116-08064-00	BOLT, STUD	4	
12	3UL-11351-00-00	GASKET, CYLINDER	1	
13	(463-11311-03-00)	CYLINDER 1	1	
14	305-11181-00-00	GASKET, CYLINDER HEAD 1	1	
15	(463-11111-00-00)	HEAD, CYLINDER 1	1	
16	90201-12362-00	WASHER, PLATE	4	
17	90179-08303-00	NUT	4	
18	NGK-B8HS0-00-00	PLUG, SPARK	1	
19	521-11161-01-00	ABSORBER 1	16	
20	463-11161-01-00	ABSORBER 1	14	N/A
21	583-15371-00-00	BREATHER	1	
22	(90446-07009-00)	HOSE	1	
23	304-15128-00-00	HOLDER	1	
24	98501-08012-00	SCREW, PAN HEAD	1	
25	92990-08100-00	WASHER	1	

CRANKCASE COVER



Ref. No.	Part Number	Description	Qty	Remarks
1	(463-15410-90-00)	CRCS COVER ASSEMBLY L ..	1	
2	(463-15415-00-00)	COVER, GENERATOR	1	
3	98501-06110-00	SCREW, PAN HEAD (92501-06110)	1	
4	98580-06565-00	SCREW, PAN HEAD (92501-06065)	2	
5	98580-06545-00	SCREW PAN HEAD (92503-06045)	1	
6	98511-06025-00	SCREW PAN HEAD (92501-06025)	1	
7	98580-06020-00	SCREW	1	
8	(463-15421-00-00)	COVER, CRANKCASE R	1	
9	3GY-15451-00-00	GASKET, CRCS COVER 0 1 ..	1	
10	99530-10014-00	PIN, DOWEL	2	
11	(463-15416-00-00)	COVER, OIL PUMP	1	
12	98580-06055-00	SCREW, pan head (92501-06065-00)	1	
13	98580-06035-00	SCREW, PAN HEAD	6	
14	98580-06020-00	SCREW	3	
15	401-15362-00-00	PLUG, OIL LEVEL	1	
16	93210-19123-00	O-RING	1	
17	90338-20023-00	PLUG	1	
18	92995-06100-00	WASHER, SPRING	1	
19	98580-06010-00	SCREW, PAN HEAD (92503-06010)	1	

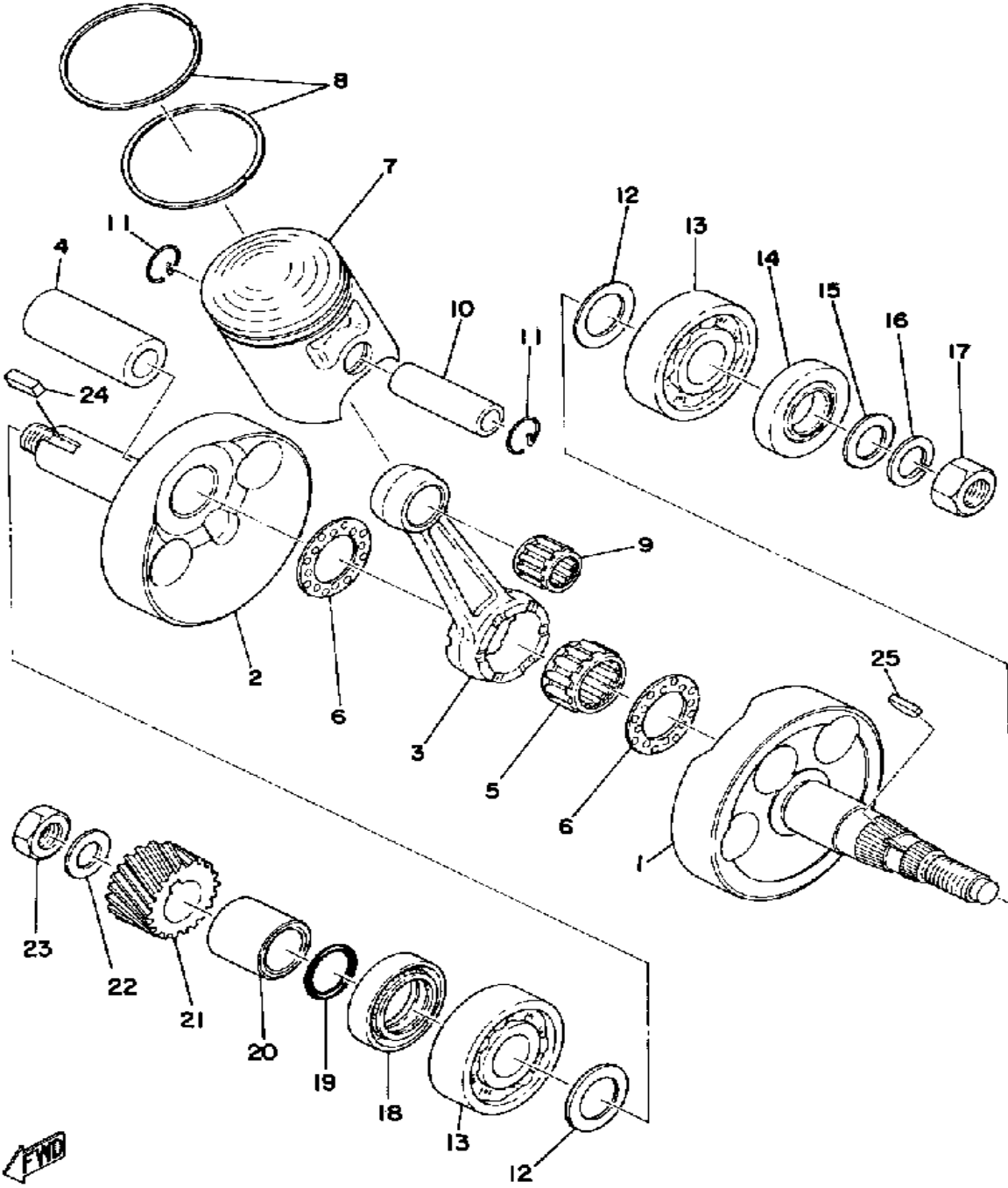
CRANK - PISTON



Ref. No.	Part Number	Description	Qty	Remarks
1	(427-11412-00-00)	CRANK 1	1	
2	(336-11422-01-00)	CRANK 2	1	
3	1M7-11651-00-00	. ROD, CONNECTING	1	
4	5E2-11681-00-00	. PIN, CRANK 1	1	
5	93310-422E7-00	. BEARING	1	
6	90209-22248-00	. WASHER	2	
7	(463-11631-01-96)	PISTON STD	1	
	(463-11635-01-00)	PISTON 1 O/S 0.5	1	ALTERNATE PARTS
	(463-11636-01-00)	PISTON 2 O/S 0.0	1	ALTERNATE PARTS
8	335-11601-00-00	PISTON RINGSET STD	1	
	335-11601-10-00	PISTON RINGSET 1ST	1	ALTERNATE PARTS
	335-11601-20-00	PISTON RINGSET 2ND	1	ALTERNATE PARTS
9	93310-21403-00	BEARING	1	
10	131-11633-00-00	PIN, PISTON	1	
11	93450-15023-00	CIRCLIP	2	
12	136-11561-00-03	SHIM, CRANK 1		
	136-11561-00-04	SHIM, CRANK 1		
	136-11561-00-05	SHIM, CRANK 1	1	
	136-11561-00-06	SHIM, CRANK 1	2	
	136-11561-00-07	SHIM, CRANK 1		
	136-11561-00-08	SHIM, CRANK 1		
13	93306-30421-00	BEARING (B6304C3)	2	
14	93102-20447-00	OIL SEAL	1	
15	90201-12535-00	WASHER, PLATE	1	
16	92901-12100-00	WASHER, SPRING	1	
17	95303-12600-00	NUT	1	
18	93103-28011-00	OIL SEAL	1	
19	93210-180A6-00	O-RING	1	
20	90387-20175-00	COLLAR	1	

CONTINUED ON NEXT FRAME ➤

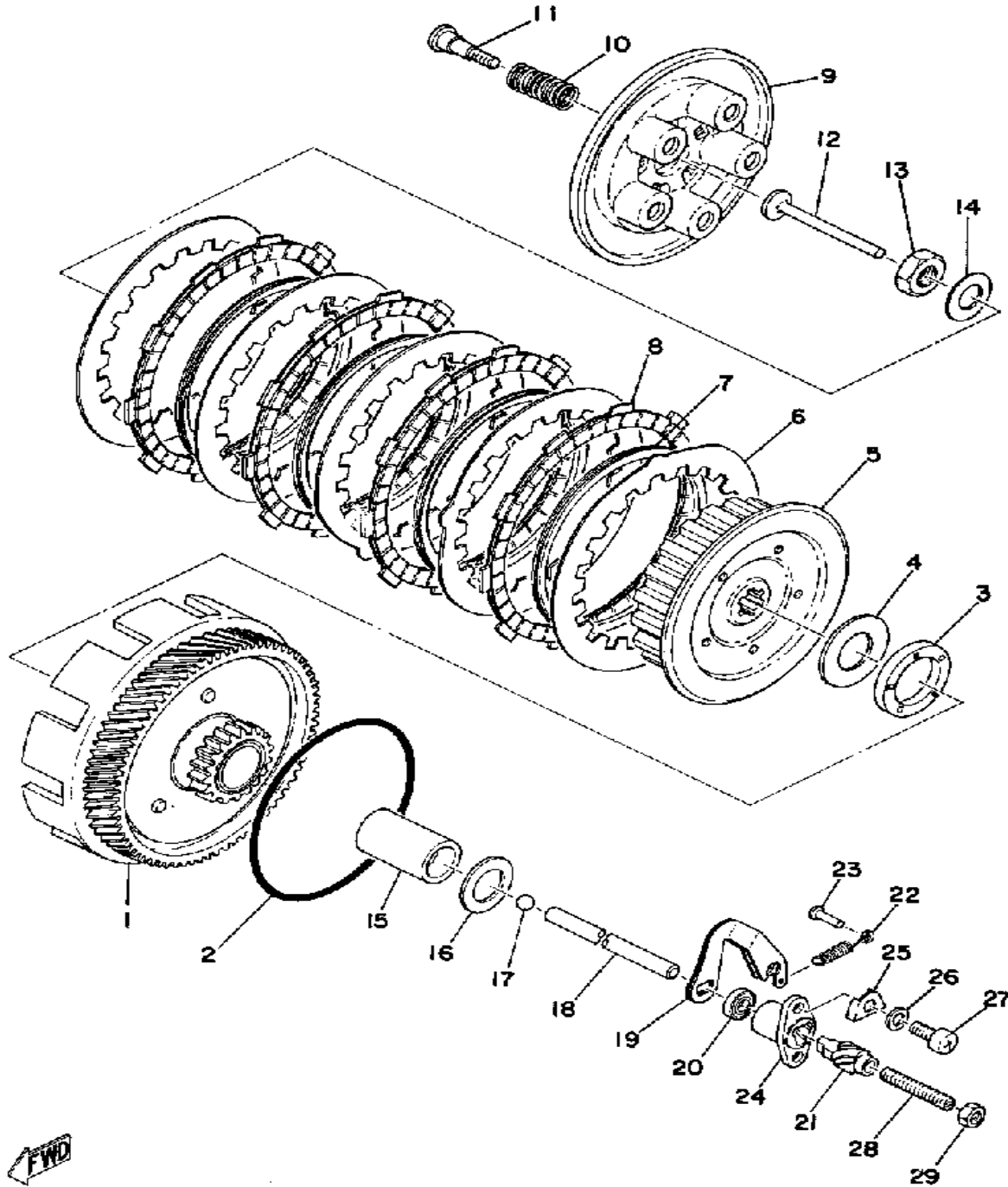
CRANK - PISTON



Ref. No.	Part Number	Description	Qty	Remarks
21	336-16111-00-00	GEAR, PRIMARY DRIVE (19T)	1	
22	90208-12015-00	WASHER, CONICAL SPRING	1	
23	90179-12244-00	NUT, SPEC'L SHAPE	1	
24	90282-05005-00	KEY, STRAIGHT	1	
25	90280-03017-00	KEY, WOODRUFF	1	
-1	1M7-11400-00-00	CRANKSHAFT ASSEMBLY	1	
-2	(463-11630-00-00)	PISTON KIT STD	1	
	(463-11630-10-00)	PISTON KIT 1ST	1	11
	(463-11630-20-00)	PISTON KIT 2ND	1	



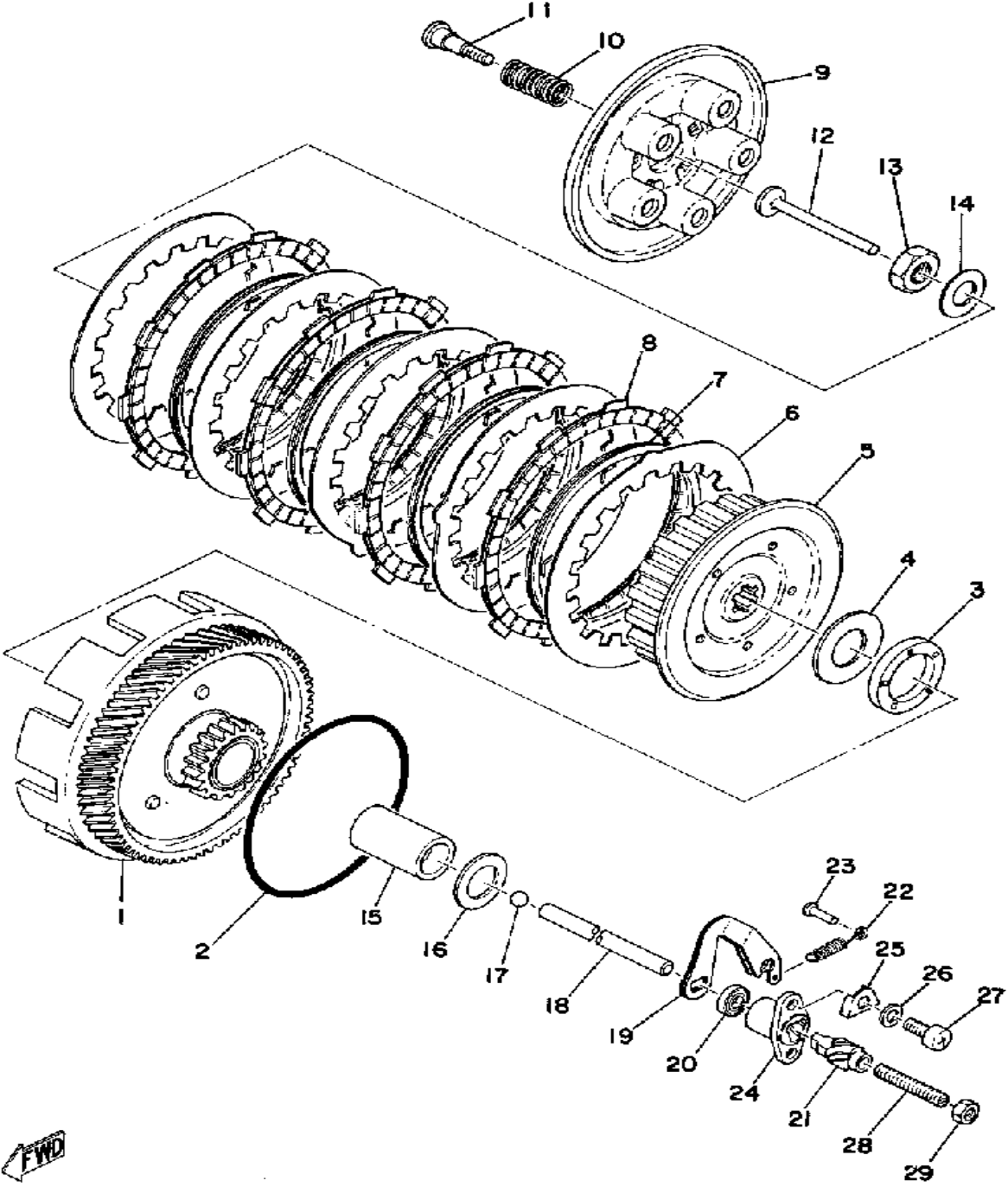
CLUTCH



Ref. No.	Part Number	Description	Qty	Remarks
1	(336-16150-00-00)	PRI DRVN GEAR	1	
2	132-16369-00-00	RING, FRICTION	1	
3	93341-22302-00	. BEARING	1	
4	(276-16154-00-00)	PLATE, THRUST 1	1	
5	132-16371-02-00	. BOSS, CLUTCH	1	
6	336-16324-00-00	. PLATE, CLUTCH 1 (13716-32400-00)	5	
7	137-16367-00-00	. RING, CUSHION	4	
8	132-16321-01-00	. PLATE, FRICTION	4	
9	132-16351-00-00	. PLATE, PRESSURE 1	1	
10	90501-20122-00	. SPRING, COMPRESSION (137-16333-00)	5	
11	(90149-05147-00)	SCREW, SPECL SHAPE	5	
12	137-16356-00-00	ROD, PUSH 1	1	
13	90170-12060-00	NUT	1	
14	90208-12015-00	WASHER, CONICAL SPRING	1	
15	90560-17146-00	SPACER	1	
16	122-16164-00-00	PLATE, THRUST 2	1	
17	93501-04011-00	BALL	1	
18	276-16357-00-00	ROD, PUSH 2 (2)	1	
19	(463-16342-01-00)	LEVER, PUSH	1	
20	93104-10085-00	OIL SEAL, SO-TYPE	1	
21	241-16341-01-00	SCREW, PUSH	1	
22	90506-07066-00	SPRING, TENSION	1	
23	132-16346-00-00	HOOK, SPRING	1	
24	314-16396-01-00	HOUSING, PUSH SCREW	1	
25	92901-06600-00	WASHER	2	
26	92995-06100-00	WASHER, SPRING	2	
27	98503-06014-00	SCREW, PAN HEAD (92502-06016)	2	

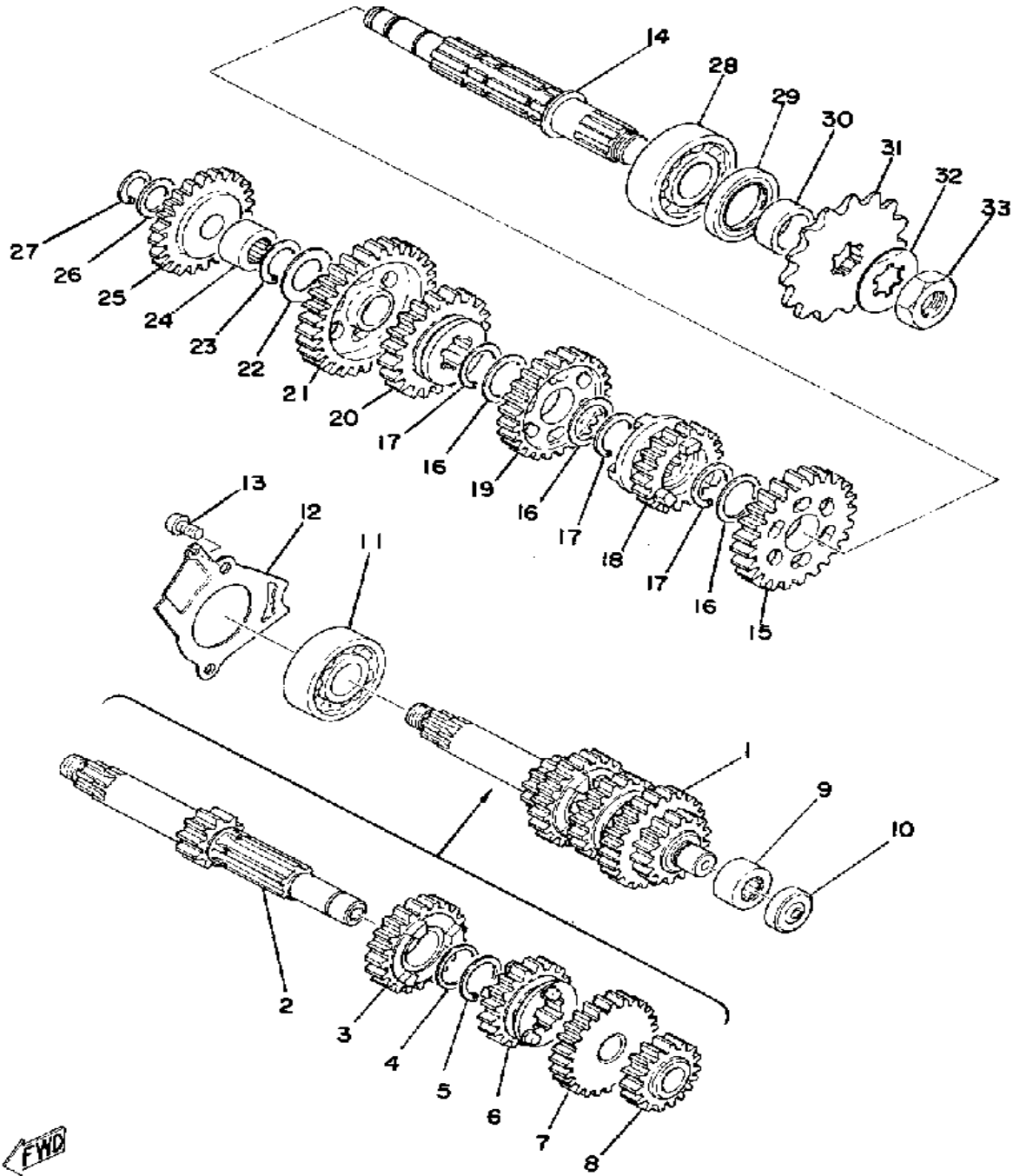
CONTINUED ON NEXT FRAME ►

CLUTCH



Ref. No.	Part Number	Description	Qty	Remarks
28	90113-06013-00	BOLT, SET	1	
29	95380-06700-00	NUT	1	
-1	(336-16301-00-00)	CLUTCH ASSEMBLY	1	

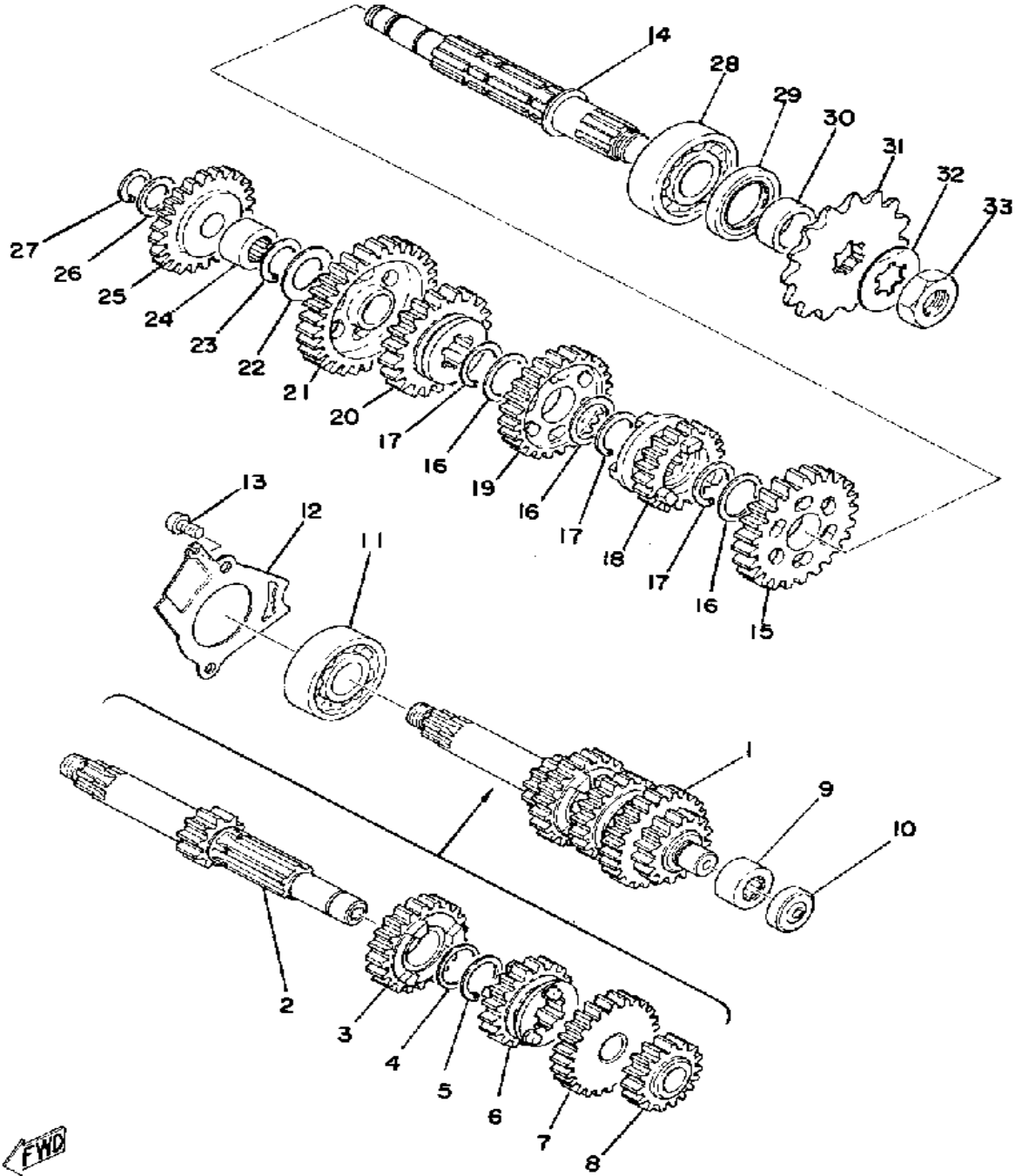
TRANSMISSION



Ref. No.	Part Number	Description	Qty	Remarks
1	(427-17410-01-00)	MAIN AXLE	1	
2	(403-17411-01-00)	AXLE, MAIN	1	
3	(427-17141-00-00)	GEAR, 4TH PINION	1	
4	90201-20266-00	. WASHER, PLATE (1.0T)	1	
5	93410-20038-00	. CIRCLIP	1	
6	427-17131-00-00	. GEAR, 3RD PINION (19T)	1	
7	(427-17151-00-00)	GEAR, 5TH PINION	1	
8	(427-17121-00-00)	GEAR, 2ND PINION	1	
9	93315-31502-00	BEARING	1	
10	93109-06060-00	SEAL, PUSH ROD	1	
11	93306-30309-00	BEARING	1	
12	1G8-17471-00-00	PLATE, COVER	1	
13	98580-06012-00	SCREW, PAN HEAD	2	
14	315-17421-01-00	AXLE, DRIVE	1	
15	427-17221-00-00	GEAR, 2ND WHEEL (30T)	1	
16	90201-20266-00	WASHER, PLATE (1.0T)	3	
17	93410-20038-00	CIRCLIP	3	
18	(427-17251-00-00)	GEAR, 5TH WHEEL	1	
19	427-17231-00-00	GEAR, 3RD WHEEL (26T)	1	
20	(265-17241-00-00)	GEAR, 4TH WHEEL	1	
21	(265-17211-00-00)	GEAR, 1ST WHEEL	1	
22	164-17427-00-06	SHIM 1 (0.6T)	1	
23	93410-20038-00	CIRCLIP	1	
24	93311-31567-00	BEARING, CYLINDRICAL	1	
25	403-15651-00-00	GEAR, KICK IDLE (28T)	1	
26	(132-15653-00-10)	WASHER	1	
	(132-15653-00-14)	WASHER		
	132-15653-00-12	WASHER (13.3-22-1.2)	1	
27	99009-13400-00	CIRCLIP (55X)	1	

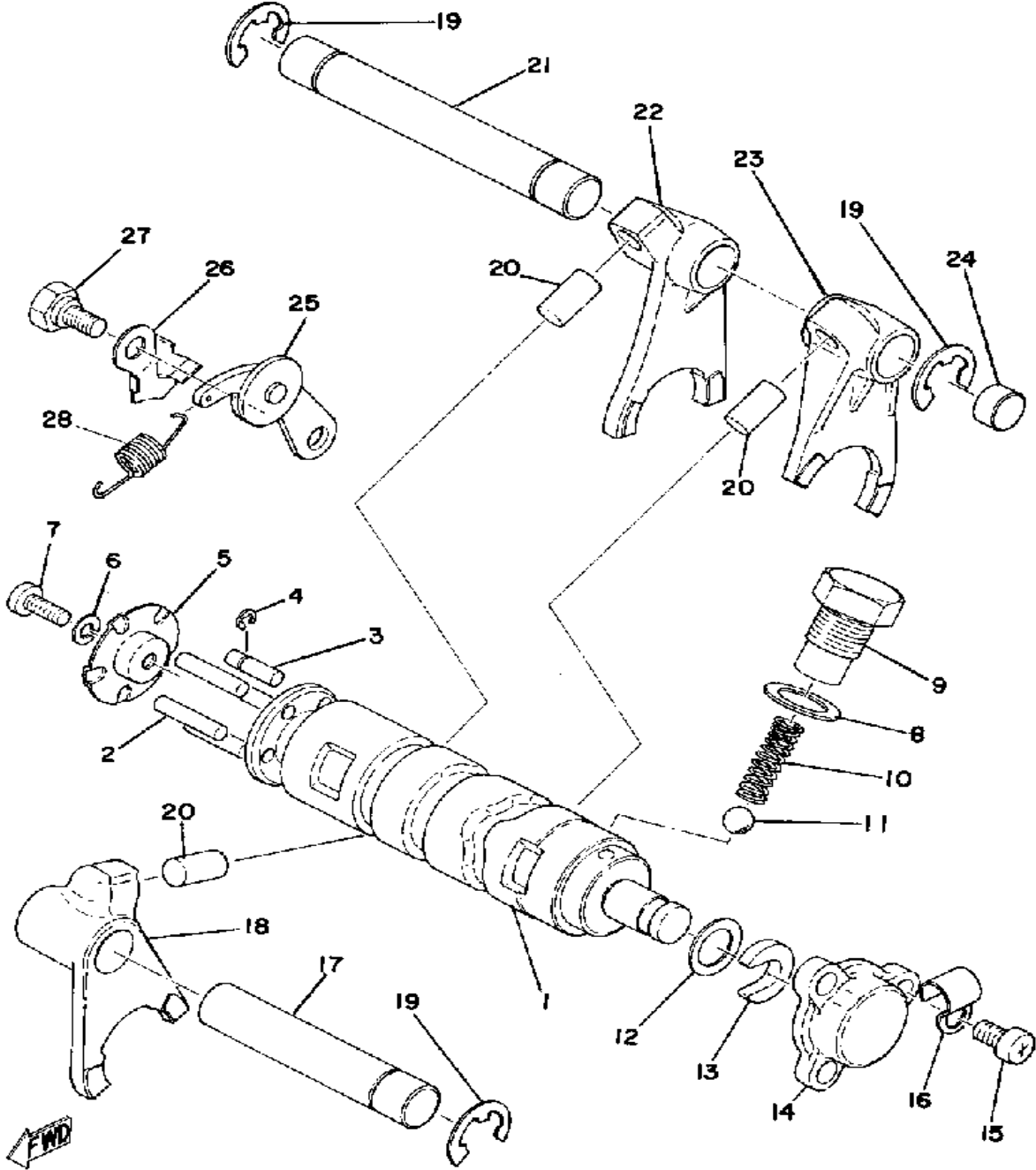
CONTINUED ON NEXT FRAME ►

TRANSMISSION



Ref. No.	Part Number	Description	Qty	Remarks
28	93306-30421-00	BEARING (B6304C3)	1	
29	93102-26042-00	OIL SEAL	1	
30	90387-20491-00	COLLAR	1	
31	93822-14037-00	SPROCKET, DRIVE 14T (1741746140)	1	
	93822-15065-00	SPROCKET, DRIVE 15T (1741746150)	1	STD
	93822-16093-00	SPROCKET, DRIVE		
32	90215-16020-00	WASHER, LOCK	1	
33	90179-16018-00	NUT	1	

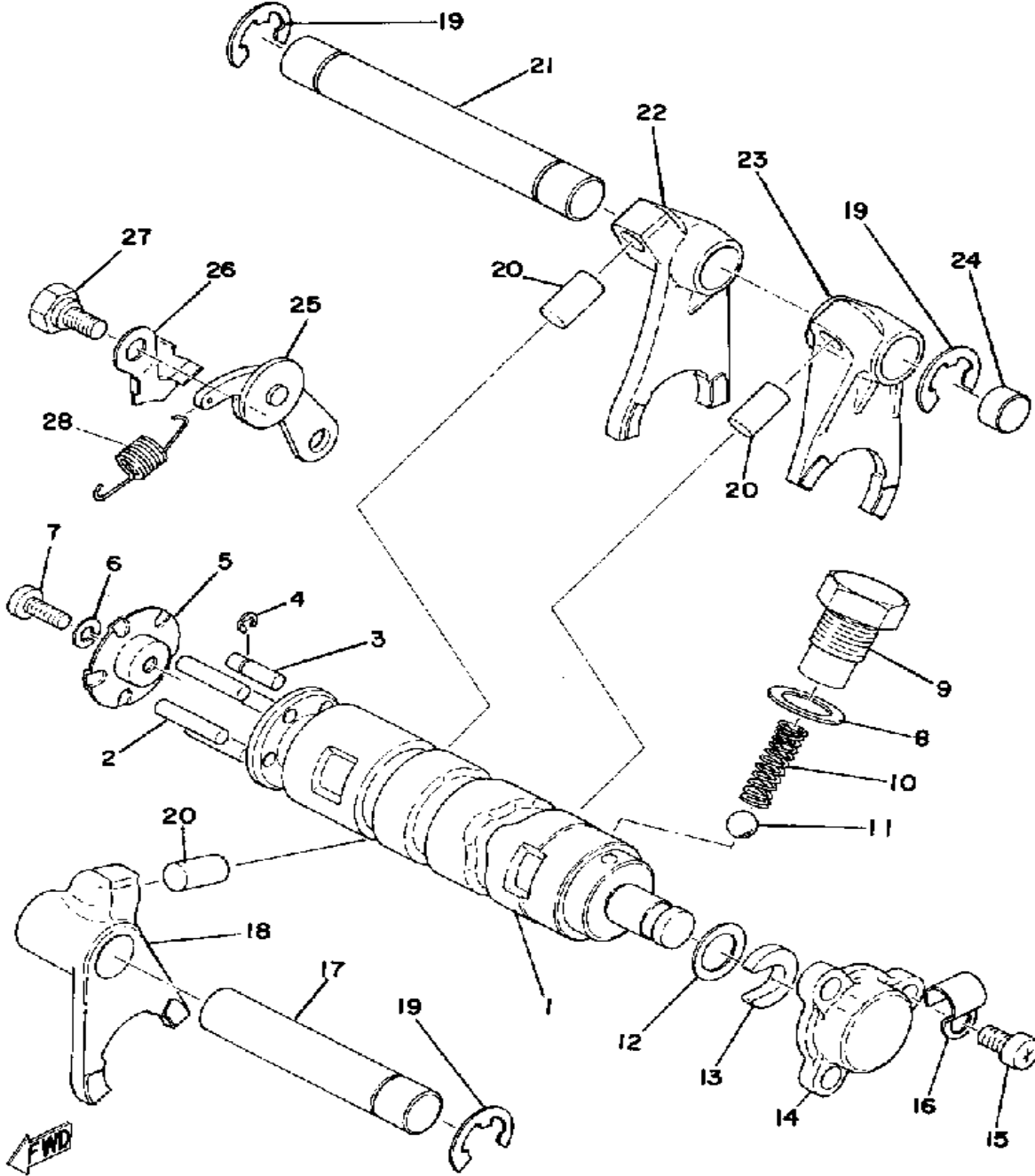
SHIFTER 1



Ref. No.	Part Number	Description	Qty	Remarks
1	315-18540-00-00	SHIFT CAM ASSEMBLY	1	
2	93604-22050-00	PIN, DOWEL	4	
3	90249-04039-00	PIN, SPEC'L SHAPE (174-18544-00)	1	
4	93430-03014-00	CIRCLIP, E-TYPE	1	
5	164-18561-00-00	PLATE, SIDE 1	1	
6	92990-05100-00	WASHER, SPRING	1	
7	98580-05012-00	SCREW, PAN HEAD	1	
8	137-15353-00-00	GASKET, DRAIN	1	
9	90109-14385-00	BOLT	1	
10	90501-10353-00	SPRING, COMPRESSION	1	
11	93505-16006-00	BALL	1	
12	90201-12166-00	WASHER, PLATE	1	
13	164-18571-01-00	HOLDER, SHIFT CAM	1	
14	164-18589-00-00	PLUG, BLIND	1	
15	98580-06010-00	SCREW, PAN HEAD (92503-06010)	3	
16	(90462-05012-00)	CLAMP	1	
17	(248-18531-00-00)	BAR, SHIF FRK GDE 1	1	
18	463-18512-00-00	FORK, SHIFT 2	1	
19	93430-10017-00	CIRCLIP	3	
20	90250-08017-00	PIN, STRAIGHT	3	
21	214-18531-00-00	BAR, SHIFT FORK GUIDE 1 ...	1	
22	463-18513-00-00	FORK, SHIFT 3	1	
23	463-18511-00-00	FORK, SHIFT 1	1	
24	214-15385-00-00	PLUG, BLIND	1	
25	132-18140-01-00	STOPPER LEVER ASSEMBLY .	1	
26	(463-15492-00-00)	COVER	1	N/A
27	90109-06001-00	BOLT	1	

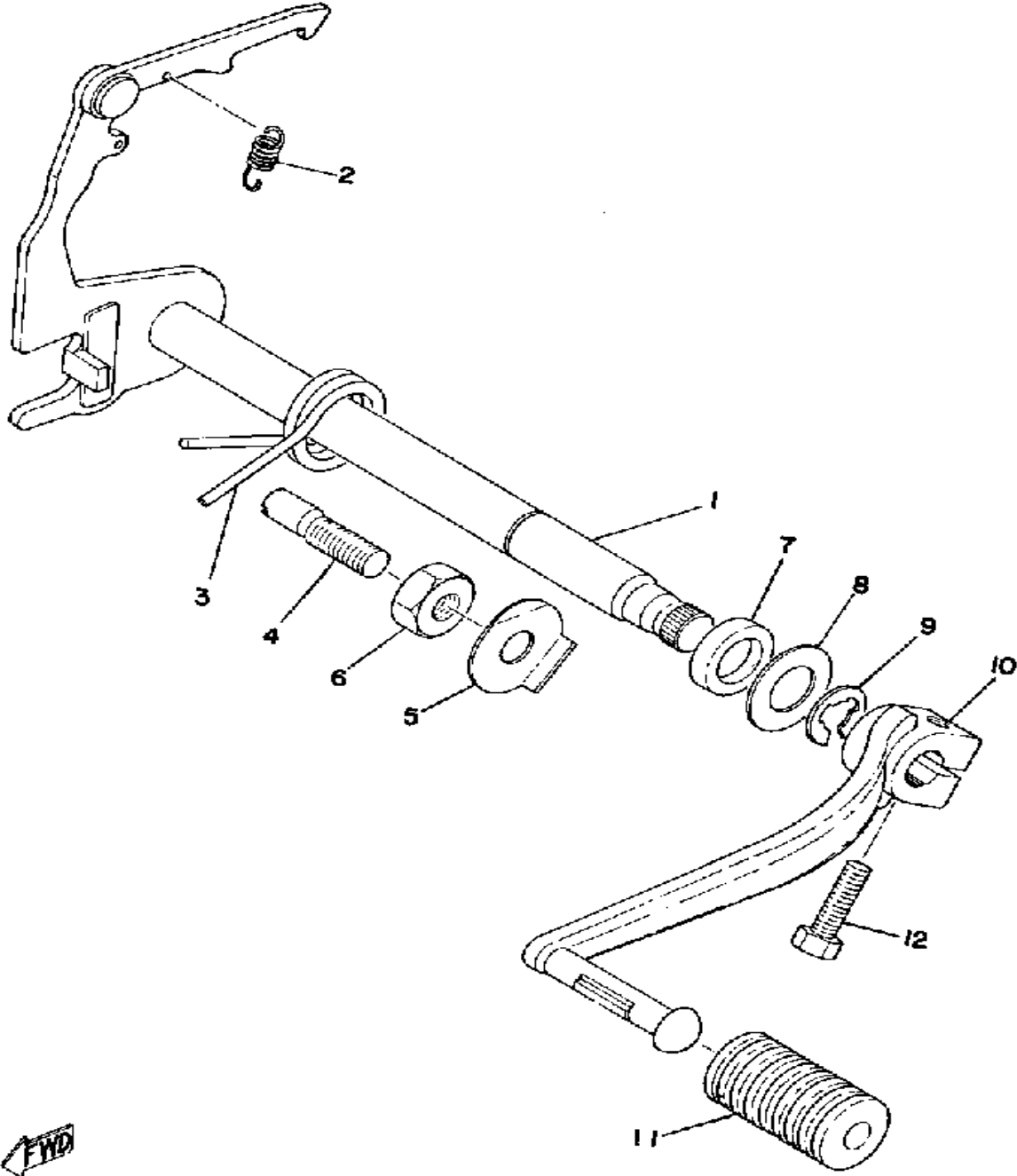
CONTINUED ON NEXT FRAME ►

SHIFTER 1



Ref. No.	Part Number	Description	Qty	Remarks
28	(90506-09013-00)	SPRING, TENSION	1	

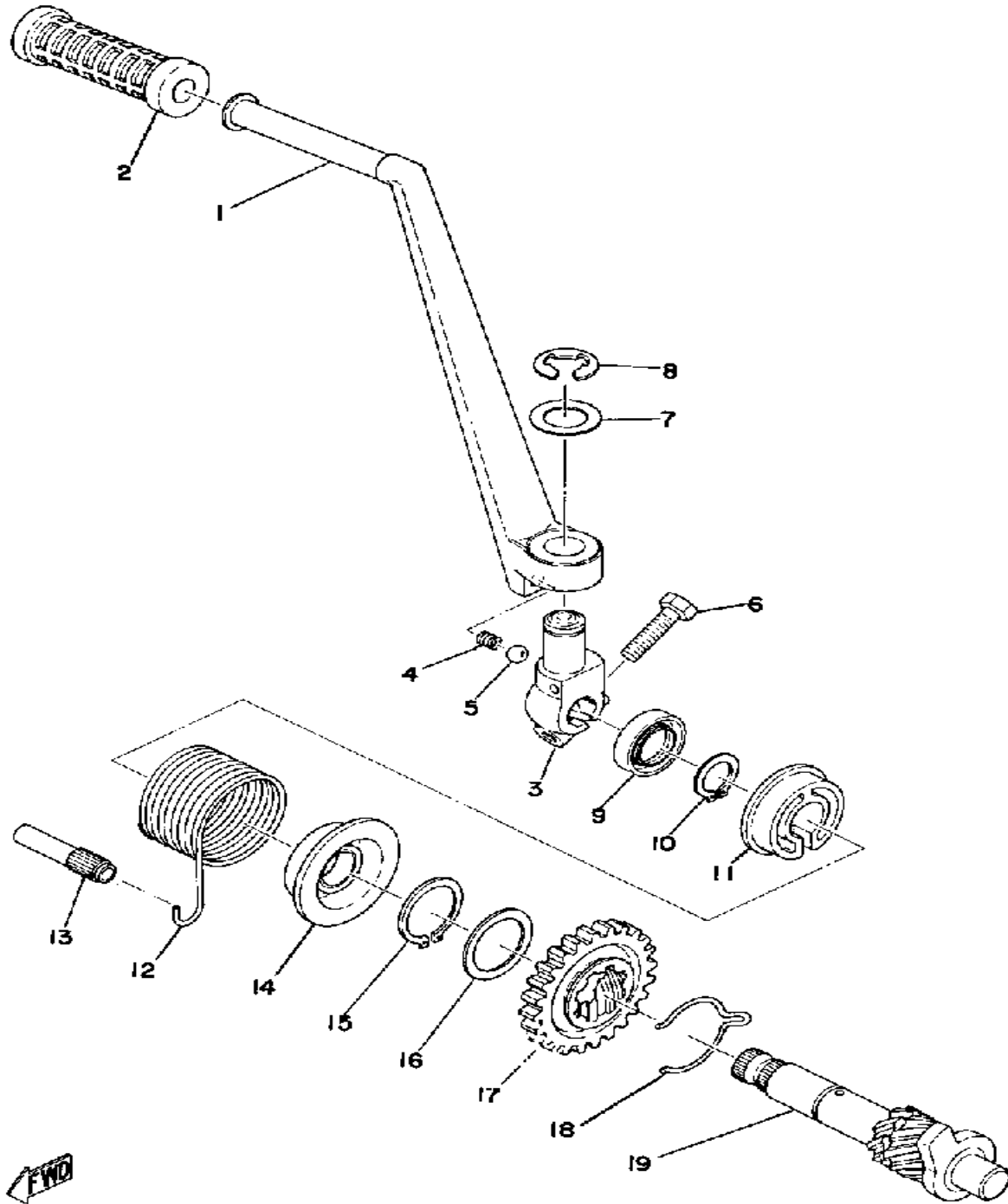
SHIFTER 2



Ref. No.	Part Number	Description	Qty	Remarks
1	276-18101-02-00	SHIFT SHAFT ASSEMBLY 1	1	
2	90506-09009-00	. SPRING, TENSION	1	
3	90508-32207-00	SPRING, TORSION (132-18124-00)	1	
4	90149-08094-00	SCREW	1	
5	90215-08014-00	WASHER, LOCK	1	
6	90170-08029-00	NUT	1	
7	93109-14010-00	OIL SEAL, SDO-TYPE	1	
8	90201-14220-00	WASHER, PLATE	1	
9	99001-12600-00	CIRCLIP	1	
10	367-18111-00-00	PEDAL SHIFT	1	
11	132-18113-01-00	COVER, SHIFT PEDAL	1	
12	97011-06020-00	BOLT	1	

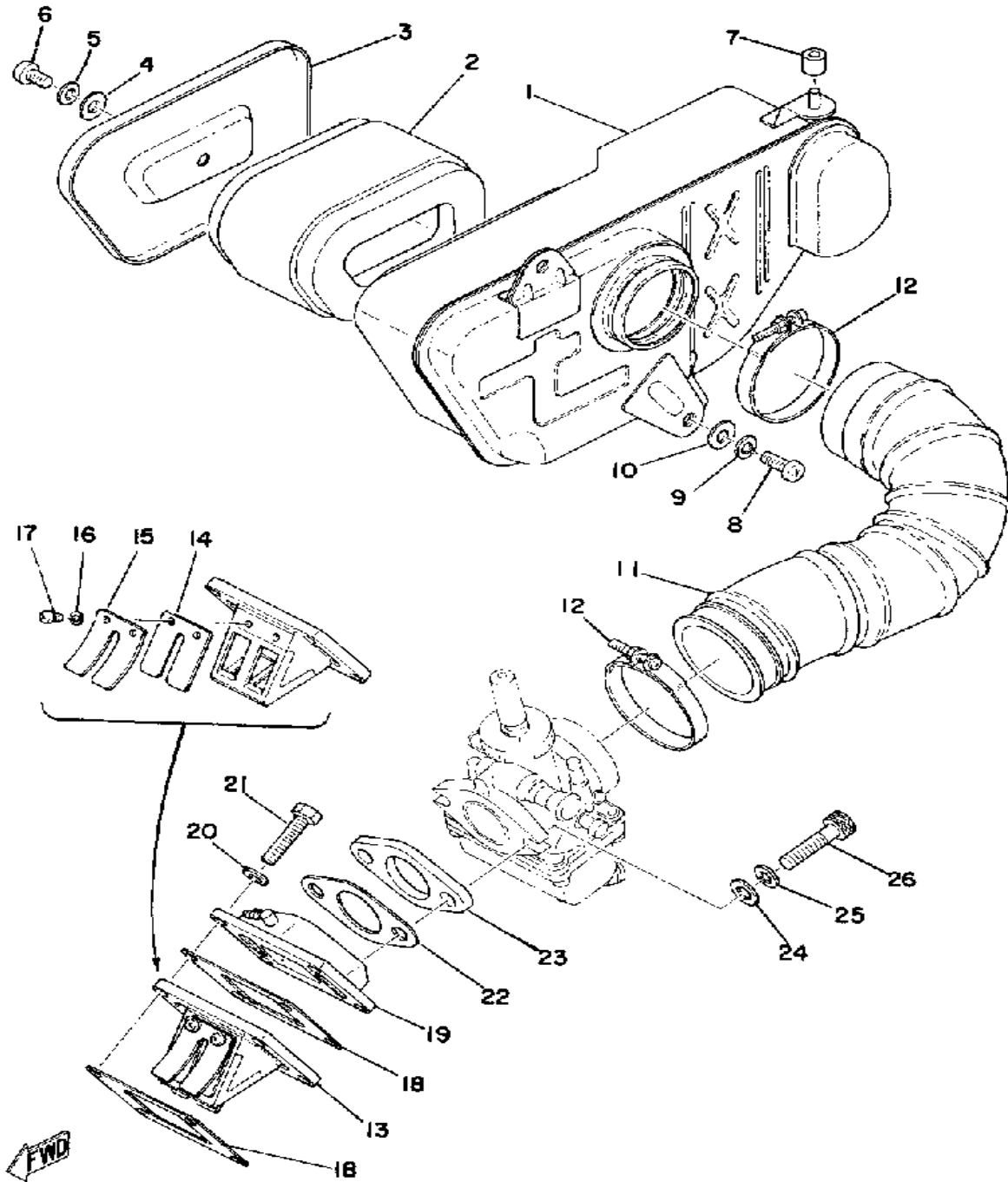
FWD

KICK STARTER



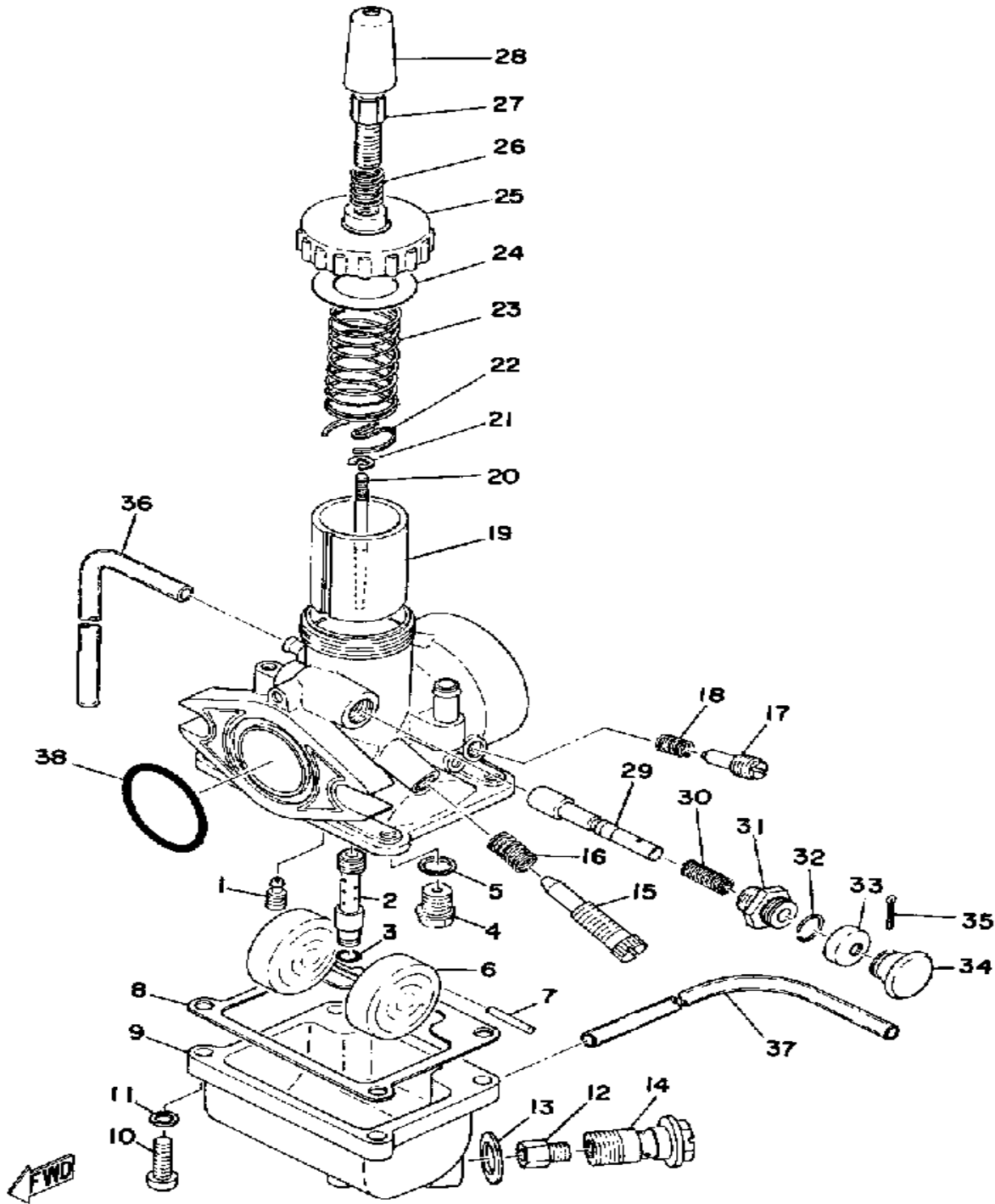
Ref. No.	Part Number	Description	Qty	Remarks
1	2F3-15611-00-93	CRANK, KICK	1	
2	156-15618-01-00	COVER, KICK LEVER	1	
3	337-15621-01-00	BOSS, KICK CRANK	1	
4	90501-12081-00	SPRING, COMPRESSION	1	
5	93507-32031-00	BALL	1	
6	97011-06025-00	BOLT (97001-06025)	1	
7	90201-15234-00	WASHER, PLATE	1	
8	99006-10600-00	CIRCLIP	1	
9	93102-15130-00	OIL SEAL, SD-TYPE	1	
10	99009-15400-00	CIRCLIP	1	
11	132-15676-01-00	COVER, SPRING	1	
12	90508-26136-00	SPRING, TORSION	1	
13	257-15668-00-00	STOPPER	1	
14	132-15664-01-00	GUIDE, SPRING	1	
15	93410-25017-00	CIRCLIP	1	
16	90201-253K0-00	WASHER, PLATE (T=1.0)	1	
17	(305-15641-00-00)	GEAR, KICK	1	
18	90468-26048-00	CLIP	1	
19	305-15660-04-00	KICK AXLE ASSEMBLY	1	

INTAKE



Ref. No.	Part Number	Description	Qty	Remarks
1	(463-14411-01-00)	CASE, AIR CLEANER 1	1	
2	463-14451-09-00	ELEMENT, AIR CLNR	1	
3	(463-14412-00-00)	CAP, CLEANER CASE 1	1	
4	90202-05057-00	WASHER, PLATE	1	
5	90201-06038-00	WASHER, PLATE	1	
6	98580-06010-00	SCREW, PAN HEAD (92503-06010)	1	
7	353-21778-00-00	DAMPER, LOCATING 1	1	
8	98503-06014-00	SCREW, PAN HEAD (92502-06016)	2	
9	92995-06100-00	WASHER, SPRING	2	
10	90201-06038-00	WASHER, PLATE	2	
11	(463-14453-01-00)	JOINT, AIR CLNR 1	1	
12	90460-51059-00	CLAMP, HOSE	2	
13	314-13610-01-00	REED VALVE ASSEMBLY	1	
14	(341-13613-00-00)	REED, VALVE	2	
15	314-13616-01-00	. STOPPER, REED VALVE	2	
16	92990-03100-00	. WASHER, SPRING (92901-03100)	4	
17	98580-03008-00	SCREW, PAN HEAD	4	
18	87A-13621-00-00	GASKET, VALVE SEAT	2	
19	(463-13565-00-00)	JOINT, CARBURETOR	1	
20	92995-06100-00	WASHER, SPRING	4	
21	97011-06025-00	BOLT (97001-06025)	4	
22	248-13556-70-00	GASKET, MANIFOLD	1	
23	304-13555-00-00	MANIFOLD, INTAKE	1	
24	92901-08600-00	WASHER	2	
25	92990-08100-00	WASHER	2	
26	91316-08030-00	BOLT, SOCKET HEAD	2	

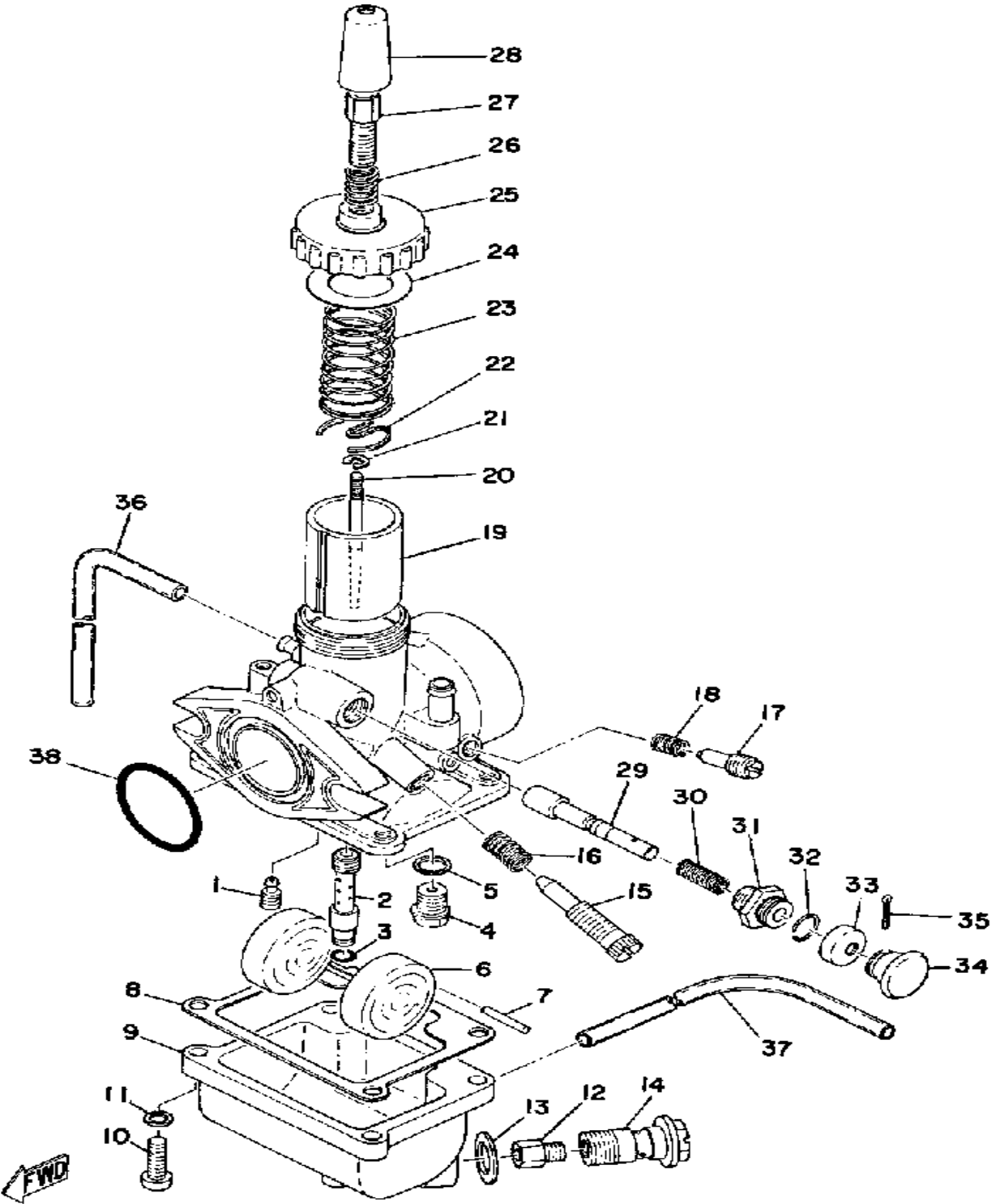
CARBURETOR



Ref. No.	Part Number	Description	Qty	Remarks
1	260-14142-22-A0	. JET, PILOT #22 5	1	
2	(437-14141-36-00)	NOZZLE, MAIN	1	
3	214-14147-00-00	. O-RING	1	
4	353-14190-15-00	. NEEDLE VALVE ASSEMBLY	1	
5	127-14195-00-00	. WASHER, NEEDLE VALVE	1	
6	304-14185-00-00	. FLOAT	1	
7	127-14186-00-00	. PIN, FLOAT	1	
8	304-14184-00-00	. GASKET, FLOAT CHAMBER	1	
9	(437-14181-00-00)	BODY, FLOAT CHMBR 1	1	
10	98503-04014-00	. SCREW, PAN HEAD	4	
11	92901-04100-00	. WASHER, SPRING	4	
12	137-14143-18-00	. JET, MAIN # 0		
	137-14143-20-00	. JET, MAIN #1 0	1	
	137-14143-22-A0	. JET, MAIN #1 0	1	STD
	137-14143-24-00	. JET, MAIN #120 (#120)		
	137-14143-26-A0	. JET, MAIN (#130)		
13	304-14198-00-00	. GASKET	1	
14	248-14166-00-00	. BOLT, BANJO	1	
15	304-14122-00-00	. SCREW, THROTTLE	1	
16	137-14133-00-00	. SPRING, THRTL STOP	1	
17	22K-14104-00-00	. AIR SCREW SET	1	
18	174-14134-00-00	. SPRING, AIR ADJUSTING	1	
19	304-14112-20-00	. VALVE, THROTTLE 1	1	
20	152-14116-10-00	. NEEDLE	1	
21	164-14137-00-00	. CLIP	1	
22	137-14136-00-00	. SEAT, SPRING	1	
23	3X3-14131-00-00	. SPRING, THRTL VALVE	1	
24	193-14126-00-00	. GASKET	1	
25	193-14158-00-00	. TOP, MIXING CHAMBER	1	

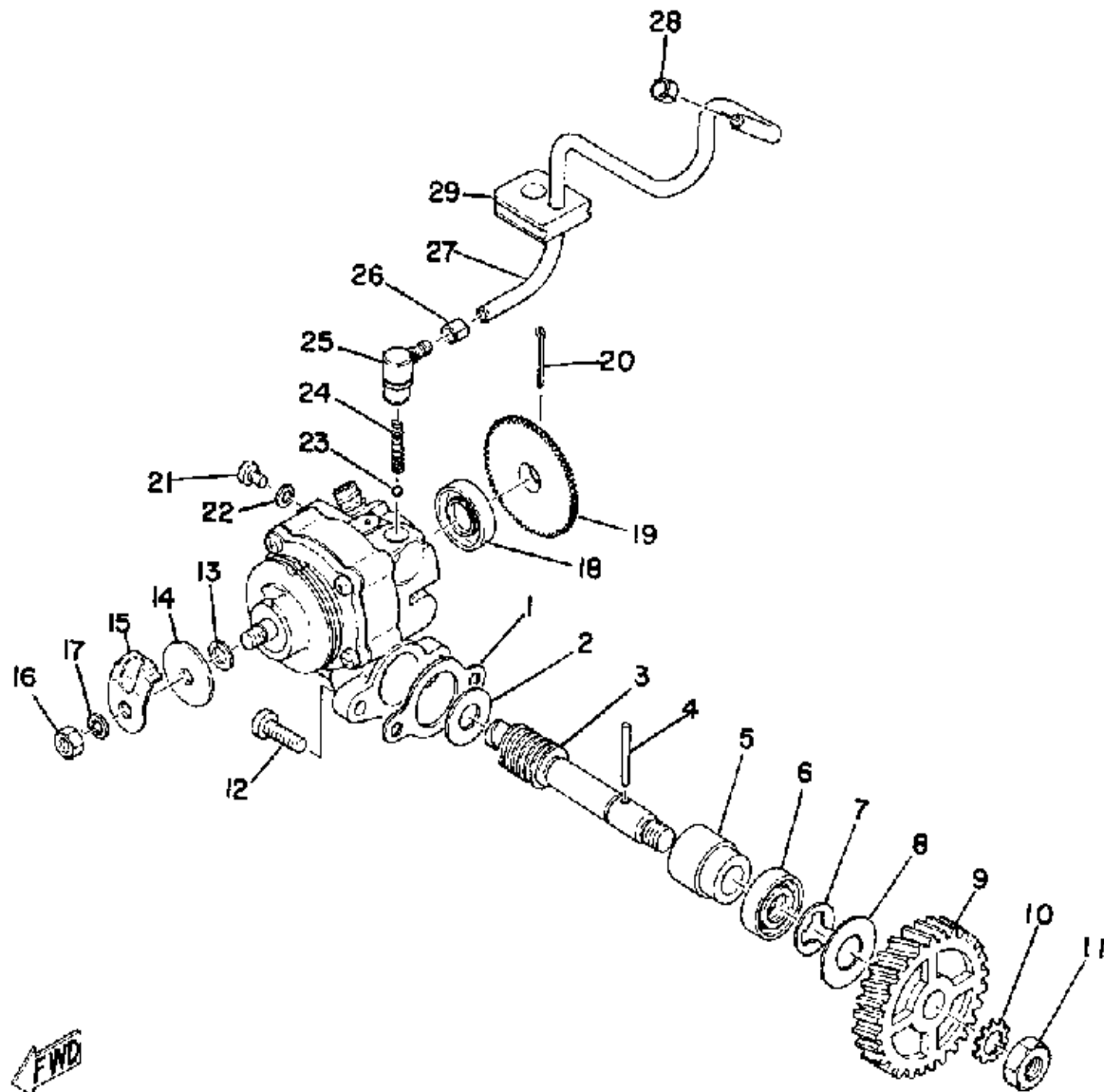
CONTINUED ON NEXT FRAME ➤

CARBURETOR



Ref. No.	Part Number	Description	Qty	Remarks
26	(193-14133-00-00)	SPRING, THRTL STOP	1	
27	(193-14124-26-00)	SCREW, CABLE ADJUSTING	1	
28	307-14169-10-00	. CAP	1	
29	304-14171-00-00	. PLUNGER, STARTER	1	
30	156-14135-00-00	. SPRING, PLUNGER	1	
31	152-14174-00-00	CAP, PLUNGER	1	
32	353-14138-00-00	. CLIP, PLUNGER	1	
33	132-14173-00-00	. COVER, PLUNGER CAP	1	
34	304-14261-00-00	. HOLDER	1	
35	91490-16020-00	. PIN, COTTER	1	
36	183-14197-01-00	PIPE, AIRVENT	1	
37	23F-14197-00-00	. PIPE, AIRVENT	1	
38	241-14147-00-00	. O-RING	1	
-1	(463-14101-90-00)	CARBURETOR ASSEMBLY 1	1	

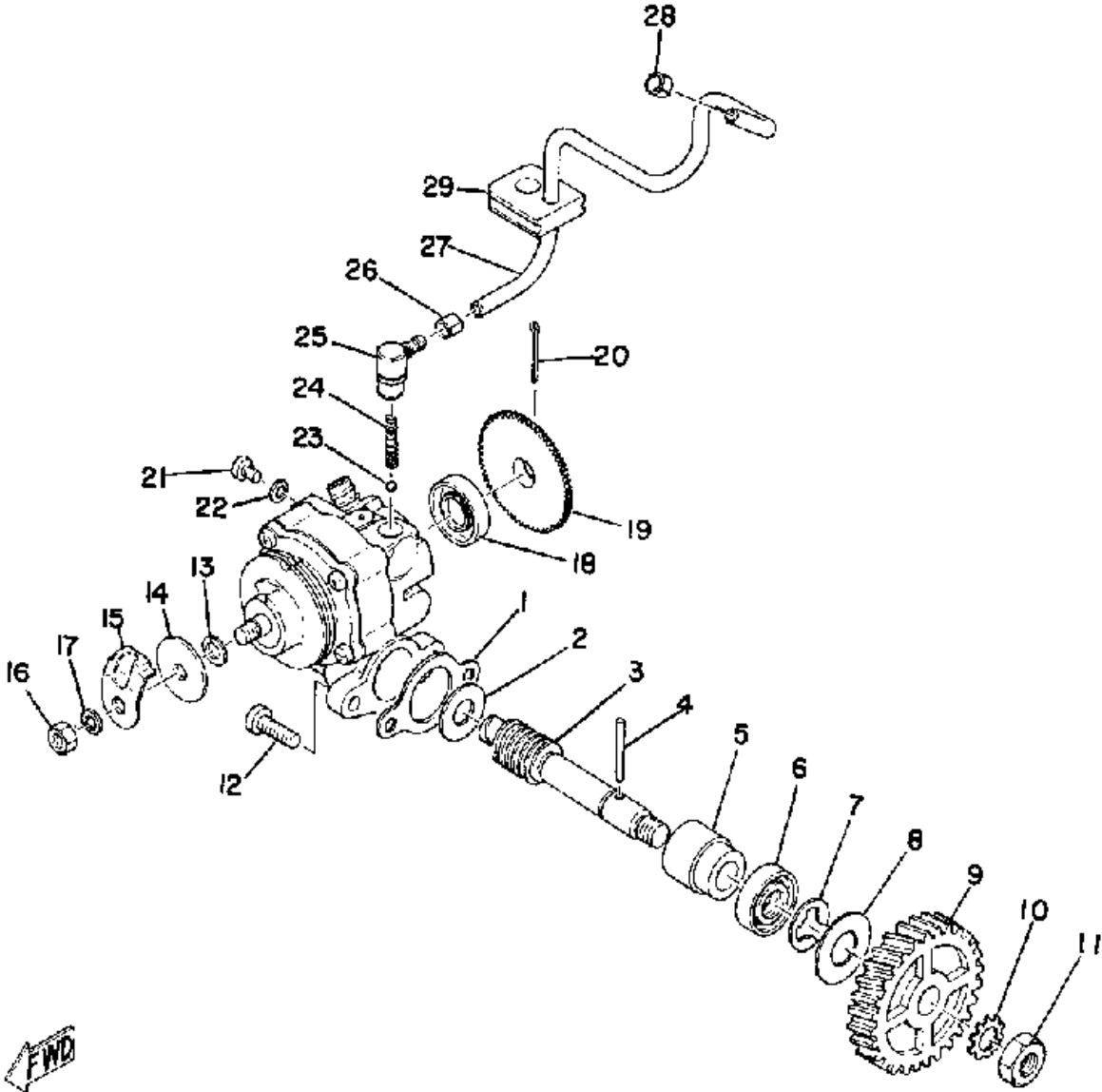
OIL PUMP



Ref. No.	Part Number	Description	Qty	Remarks
1	3MT-13116-00-00	GASKET, PUMP CASE (8Y0-13116-00)	1	
2	90201-08624-00	WASHER, PLATE	1	
3	275-13175-01-00	SHAFT, WORM	1	
4	93603-22028-00	PIN, DOWEL	1	
5	1E7-13176-00-00	METAL, WRM SHAF OTR	1	
6	93101-10002-00	OIL SEAL	1	
7	99001-08600-00	CIRCLIP	1	
8	90201-105J4-00	WASHER, PLATE (90201-106H1)	1	
9	248-13178-00-00	GEAR, DRIVE (28T)	1	
10	92901-08400-00	WASHER, EX.TOOTH	1	
11	95303-08700-00	NUT	1	
12	98580-05016-00	SCREW, PAN HEAD (98501-05016)	2	
13	137-13137-00-10	. SHIM (1.0T)	1	
14	137-13138-01-00	. PLATE, ADJUSTING	1	
15	(402-13146-00-00)	COVER, AJST PULLEY	1	
16	95380-05600-00	. NUT	1	
17	92990-05100-00	. WASHER, SPRING	1	
18	93101-10090-00	. OIL SEAL	1	
19	(137-13128-00-00)	PLATE, STARTER	1	
20	91401-12018-00	. PIN, COTTER	1	
21	98901-04008-00	. SCREW, BIND	1	
22	90430-04004-00	. GASKET	1	
23	93505-32002-00	. BALL	1	
24	90501-02018-00	. SPRING, COMPRESSION	1	
25	353-13552-01-00	. NOZZLE	1	
26	90468-02033-00	. CLIP	1	
27	(90445-05266-00)	HOSE	1	

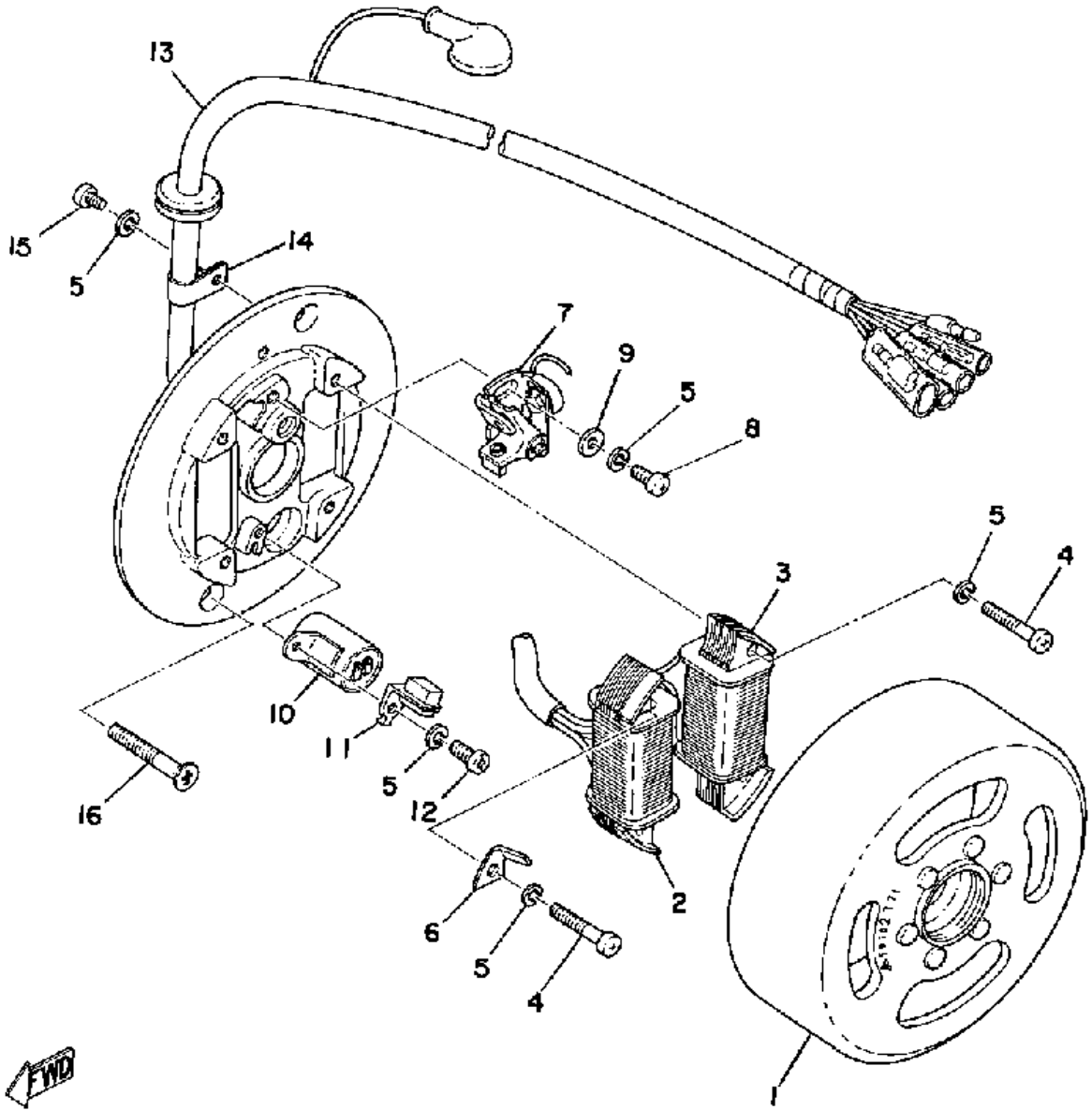
CONTINUED ON NEXT FRAME ►

OIL PUMP



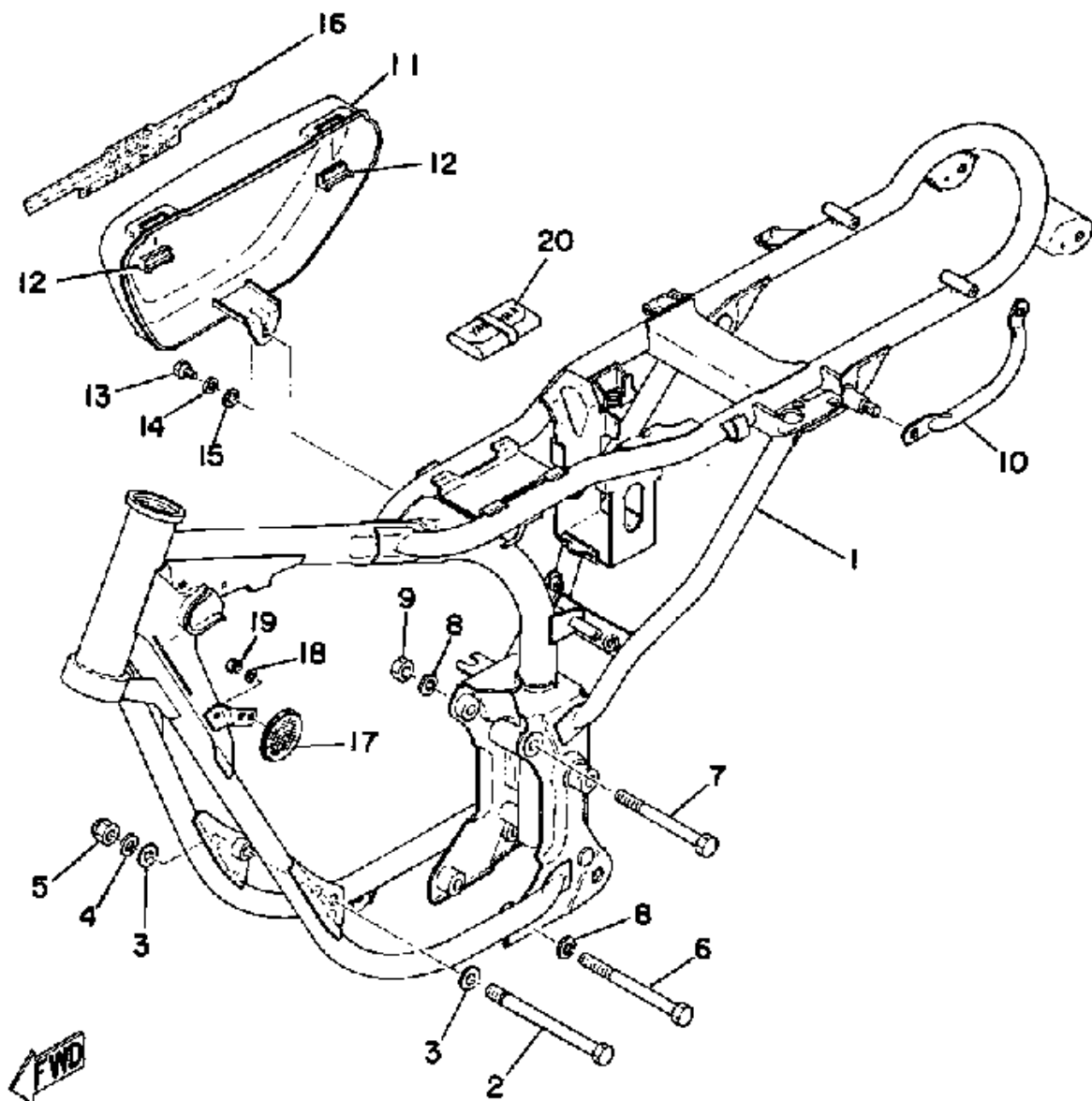
Ref. No.	Part Number	Description	Qty	Remarks
28	90468-02033-00	CLIP	1	
29	248-13174-00-00	HOLDER, OIL PIPE	1	
-1	(463-13101-01-00)	OIL PUMP ASSEMBLY	1	

FLYWHEEL MAGNETO



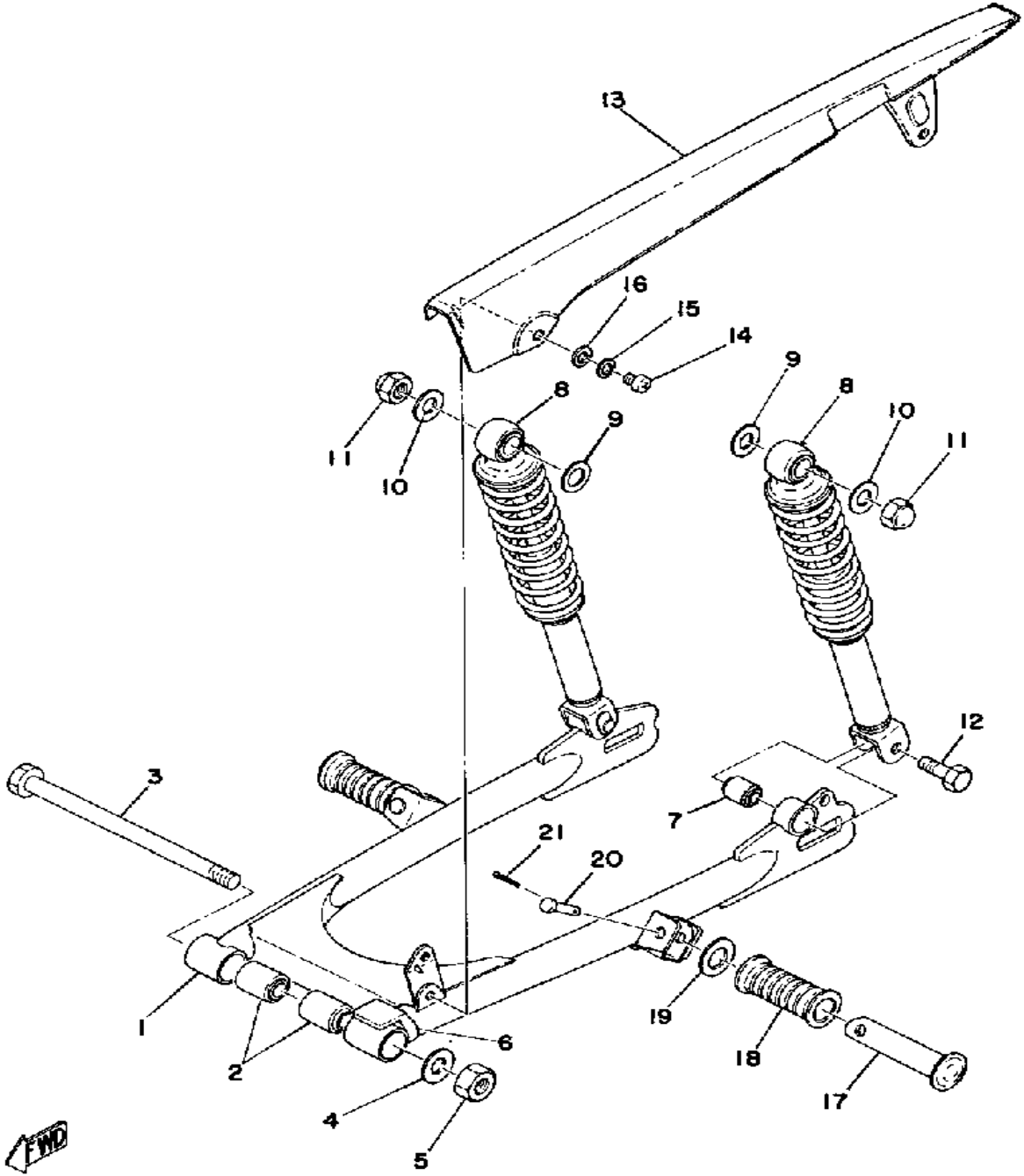
Ref. No.	Part Number	Description	Qty	Remarks
1	(1L1-81350-20-00)	ROTOR ASSEMBLY	1	
2	451-81312-20-00	. COIL, SOURCE	1	
3	(463-81313-20-00)	COIL, LIGHTING 1	1	
4	97602-04125-00	. SCREW, PN/HD.W/WSHR (4-25)	4	
5	92901-04100-00	. WASHER, SPRING	7	
6	(353-81332-20-00)	PLATE, TIMING	1	N/A
7	2A6-81321-20-00	. CONTACT BRKR ASSEMBLY	1	
8	110-81346-21-00	. SCREW, PAN HEAD	1	
9	92990-04200-00	. WASHER, PLAIN	1	
10	296-81325-90-00	. CONDENSER	1	
11	116-81331-20-00	. LUBRICATOR	1	
12	110-81346-21-00	. SCREW, PAN HEAD	1	
13	(465-81315-20-00)	LEAD WIRE ASSEMBLY	1	
14	109-81328-11-00	. CLAMP	1	
15	97601-04106-00	. SCREW, PN/HD.W/WSHR	1	
16	98701-05012-00	SCREW, FLAT HEAD	2	
-1	(465-81300-20-00)	FLYWHL MAGNETO ASSEMBLY	1	

FRAME - SIDE COVER



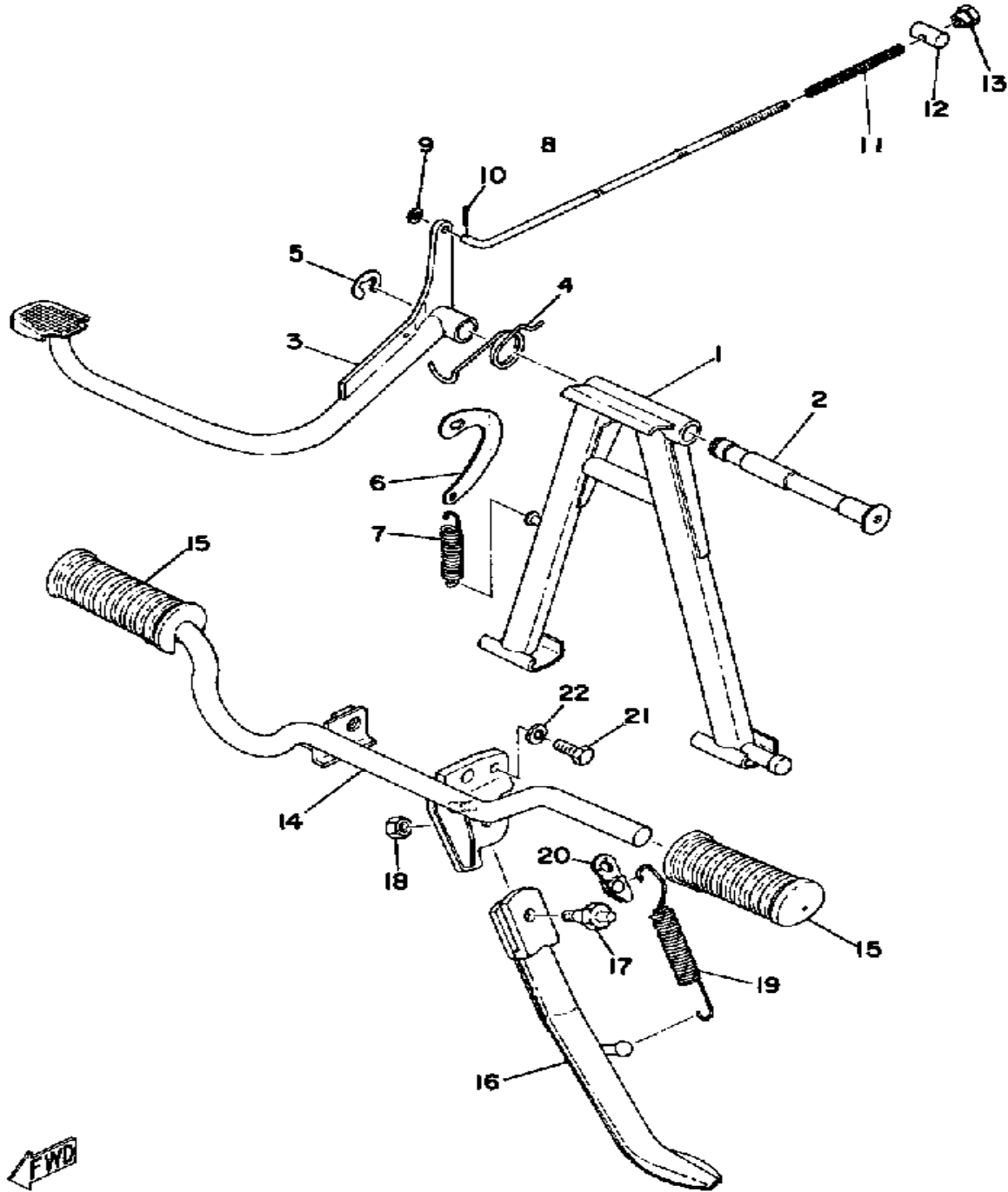
Ref. No.	Part Number	Description	Qty	Remarks
1	(463-21110-02-33)	FRAME	1	YAMAHA BLACK
2	(90105-08027-00)	BOLT, WASHER BASED	1	
3	90209-08050-00	WASHER, SPEC'L SHAP	2	
4	92990-08100-00	WASHER	1	
5	95611-08100-00	NUT, U	1	
6	90105-10040-00	BOLT, WASHER BASED	1	
7	97021-10095-00	BOLT, HEXAGON	1	
8	92990-10100-00	LOCKWASHER	2	
9	95303-10600-00	NUT (95301-10600)	1	
10	(307-21165-00-33)	HANDLE, STANDING	1	N/A
11	(463-21711-01-L2)	COVER, SIDE 1	1	COMP. GREEN METALLIC
12	466-21717-00-00	DAMPER, SIDE COVER	2	
13	97013-06012-00	BOLT	1	
14	92995-06100-00	WASHER, SPRING	1	
15	90201-06038-00	WASHER, PLATE	1	
16	(465-21781-00-00)	EMBLEM 1	1	
17	355-85111-01-00	REFLECTOR, FRONT 1	2	
18	92990-05200-00	WASHER, PLAIN	2	
19	95380-05600-00	NUT	2	
20	(463-28100-10-00)	TOOL KIT	1	

REAR ARM - REAR CUSHION - CHAIN CA



Ref. No.	Part Number	Description	Qty	Remarks
1	(465-22110-00-33)	REAR ARM	1	YAMAHA BLACK
2	102-22123-00-00	BUSH 1	2	
3	336-22141-00-00	SHAFT, PIVOT	1	
4	92990-10200-00	WASHER, PLAIN	1	
5	95303-10600-00	NUT (95301-10600)	1	
6	183-22151-00-00	SEAL, GUARD	1	
7	164-22216-00-00	BUSH, REAR SHOCK ABSORBER	2	
8	(478-22210-20-00)	SHK/ABS ASSEMBLY, REAR .	2	
9	90201-14218-00	WASHER, PLATE	2	
10	90201-10437-00	WASHER, PLATE	2	
11	95303-10800-00	NUT (CROWN) (92803-10700) .	2	
12	(90106-08027-00)	BOLT, DOME HEAD	2	
13	(326-22311-00-93)	CASE, CHAIN	1	
14	98580-06012-00	SCREW, PAN HEAD	3	
15	92995-06100-00	WASHER, SPRING	3	
16	90201-06M08-00	WASHER, PLATE	1	
17	120-27431-00-00	FOOTREST, REAR 1	2	
18	120-27433-00-00	COVER, REAR FOOTREST ...	2	
19	90201-20279-00	WASHER, PLATE	2	
20	90240-06042-00	PIN, CLEVIS	2	
21	91490-16020-00	PIN, COTTER	2	

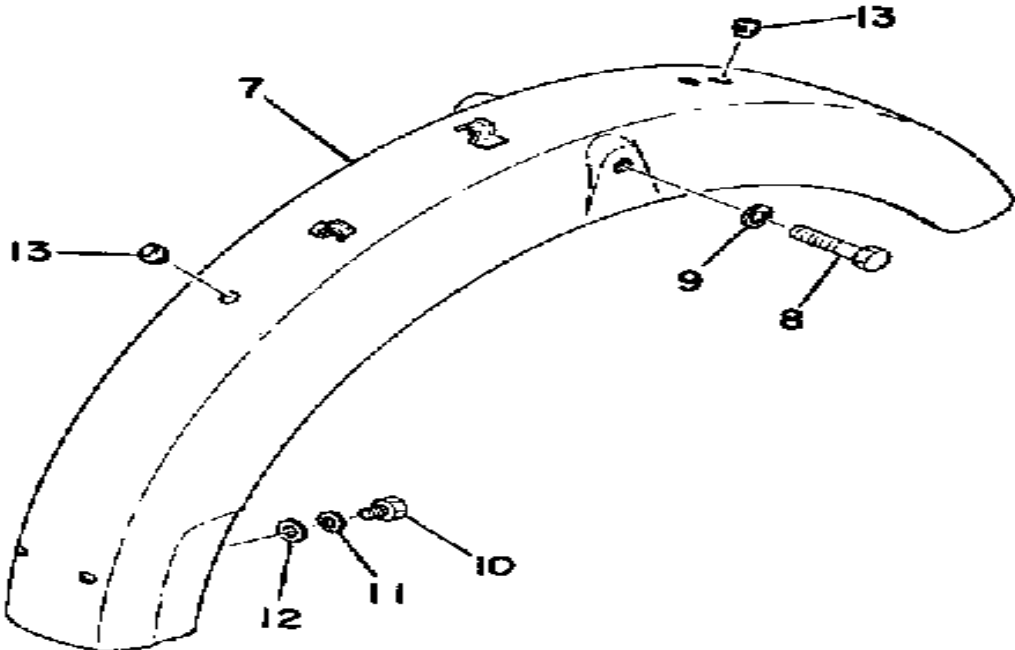
STAND - FOOTREST - BRAKE PEDAL



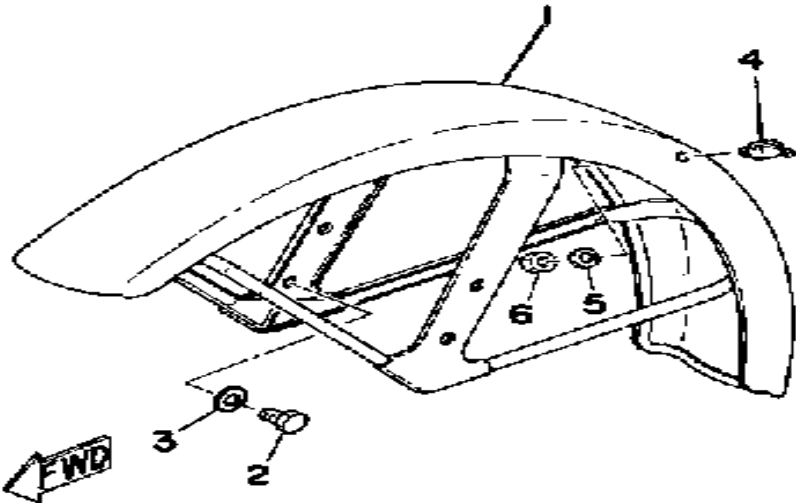
Ref. No.	Part Number	Description	Qty	Remarks
1	(336-27111-01-00)	STAND, MAIN	1	
2	(336-27112-00-00)	SHAFT, MAIN STAND	1	
3	(2T3-27211-00-00)	PEDAL, BRAKE	1	
4	90508-32056-00	SPRING, TORSION	1	
5	93430-12008-00	CIRCLIP	1	
6	(307-27115-00-00)	LINK, MAIN STAND	1	
7	(90506-29054-00)	SPRING, TENSION	1	
8	(174-27231-01-00)	ROD, BRAKE	1	
9	90201-06038-00	WASHER, PLATE	1	
10	91490-20020-00	PIN, COTTER	1	
11	90501-10245-00	SPRING, COMPRESSION	1	
12	90249-12008-00	PIN	1	
13	90179-06411-00	NUT	1	
14	(465-27411-00-00)	FOOTREST 1	1	
15	122-27413-00-00	COVER, FOOTREST	2	
16	(465-27311-01-00)	STAND, SIDE	1	
17	(90109-08396-00)	BOLT	1	
18	95303-08700-00	NUT	1	
19	(90507-29022-00)	SPRING, TENSION	1	
20	(507-27315-01-00)	LINK, SIDE STAND	1	
21	97313-08020-00	BOLT, HEXAGON	1	
22	92990-08100-00	WASHER	1	

FWD

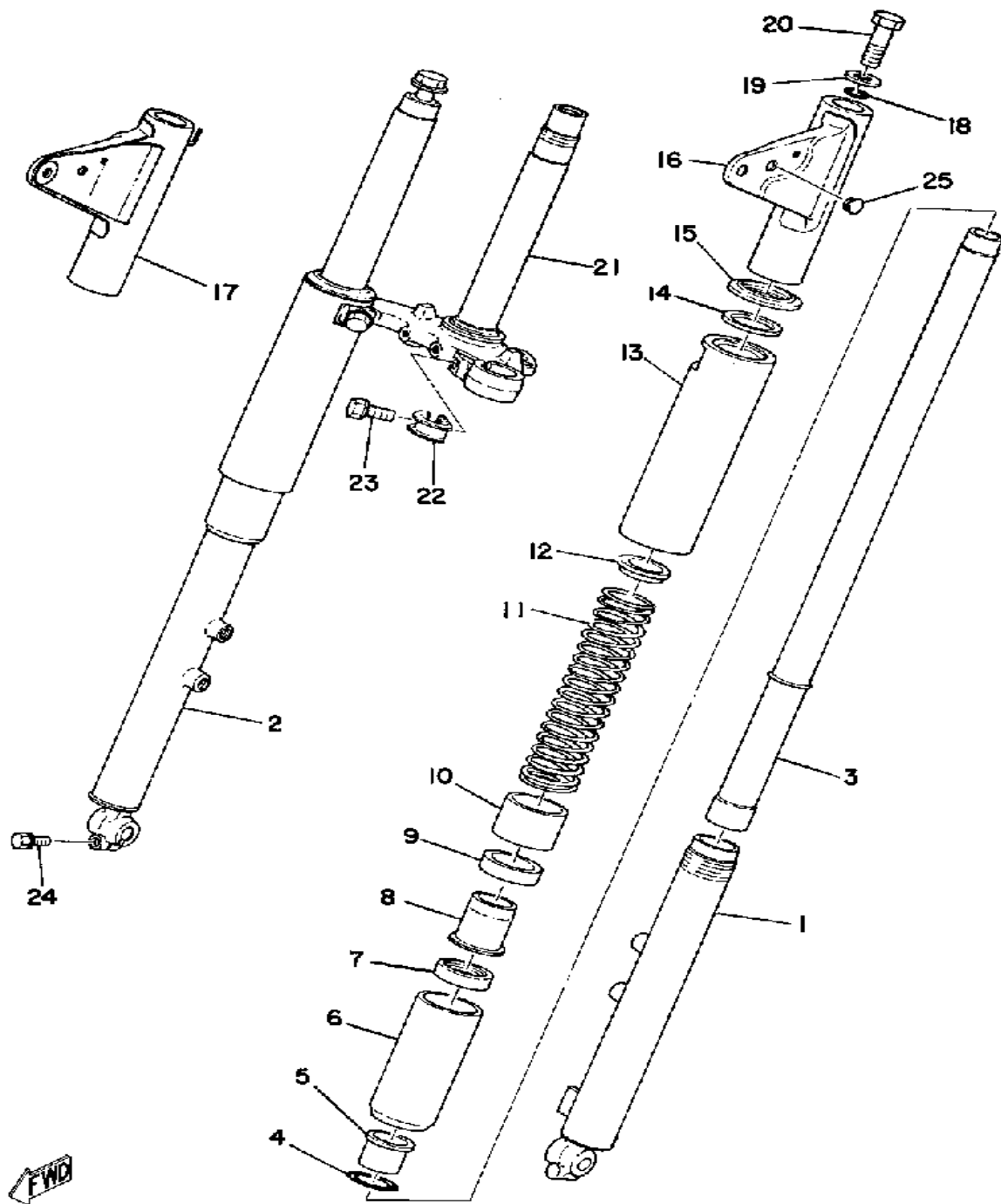
FRONT FENDER - REAR FENDER



Ref. No.	Part Number	Description	Qty	Remarks
1	(478-21510-01-93)	FENDER, FRONT	1	
2	97301-08010-00	BOLT, HEXAGON	4	
3	92990-08100-00	WASHER	4	
4	(174-21518-00-00)	HOLDER, CABLE	1	
5	92995-06100-00	WASHER, SPRING	1	
6	95380-06600-00	NUT	1	
7	(326-21610-00-93)	FENDER, REAR	1	
8	97313-06050-00	BOLT	2	
9	92995-06100-00	WASHER, SPRING	2	
10	97013-06012-00	BOLT	2	
11	92995-06100-00	WASHER, SPRING	2	
12	90201-06038-00	WASHER, PLATE	2	
13	90480-12013-00	GROMMET	2	

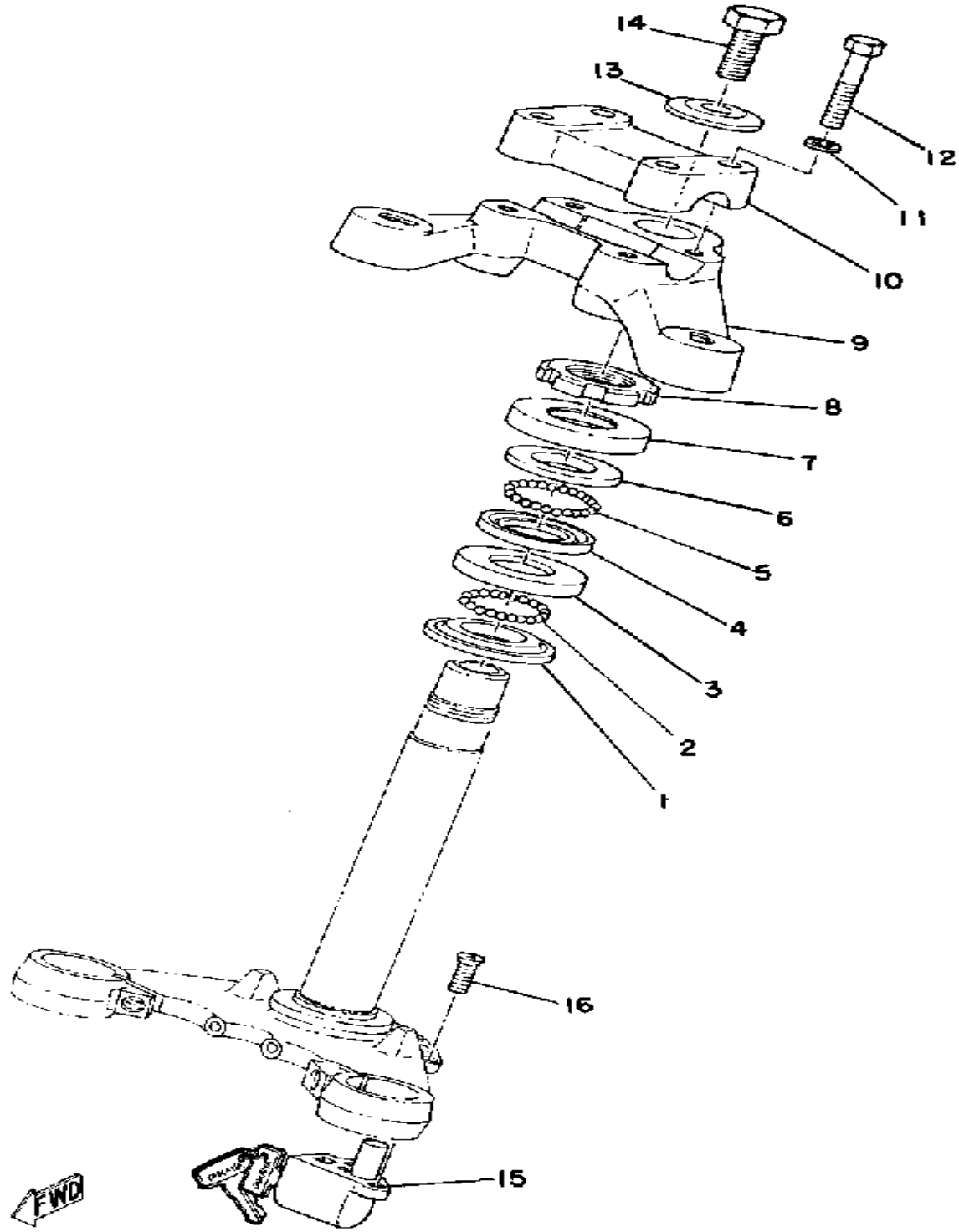


FRONT FORK



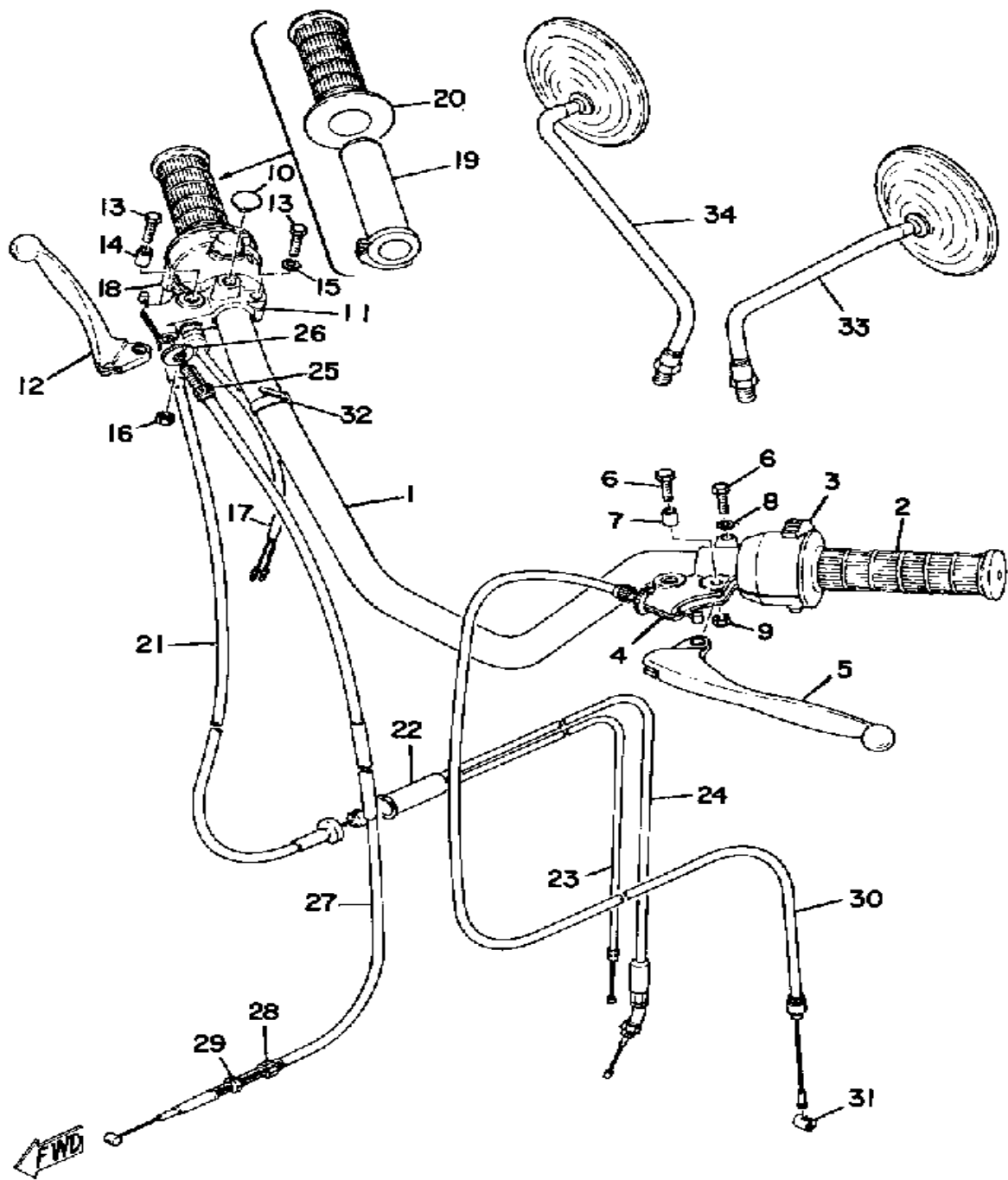
Ref. No.	Part Number	Description	Qty	Remarks
1	(326-23126-90-93)	TUBE, OUTER 1	1	
2	(326-23136-90-93)	TUBE, OUTER 2	1	
3	(241-23124-40-00)	TUBE, INNER 1	2	
4	122-23147-00-00	. O-RING	2	
5	(357-23125-90-00)	METAL, SLIDE 1	2	
6	(201-23150-01-00)	OUTER NUT	2	
7	276-23145-51-00	.. OIL SEAL	2	
8	(122-23143-00-00)	SEAT, SPRING LOWER	2	
9	(463-23118-00-00)	SPACER	2	
10	(336-23117-90-00)	GUIDE, SPRING	2	
11	(336-23141-90-00)	SPRING, FRONT FORK	2	
12	(342-92190-10-00)	GUIDE SPRING	2	
13	(201-23123-00-L2)	COVER, LOWER 1	2	COMP. GREEN METALLIC
14	(463-23163-00-00)	GASKET	2	
15	(463-23116-00-00)	GUIDE, COVER LOWER	2	
16	(507-23121-00-L2)	COVER, UPPER 1	1	COMP. GREEN METALLIC
17	(507-23131-00-L2)	COVER, UPPER 2	1	COMP. GREEN METALLIC
18	307-23114-00-00	. O-RING	2	
19	276-23112-50-00	. WASHER, CAP	2	
20	(307-23111-00-00)	BOLT, CAP	2	
21	(464-23340-01-33)	UNDER BRACKET	1	YAMAHA BLACK
22	260-23318-40-00	. HOLDER, CABLE 1	1	
23	5J0-23346-00-00	. BOLT 1	2	
24	(90119-08010-00)	BOLT, WITH WASHER	1	
25	(90338-09060-00)	PLUG, SPEC'L SHAPE	2	
-1	(465-23100-00-L2)	FRONT FORK ASSEMBLY	1	COMP. GREEN METALLIC

STEERING



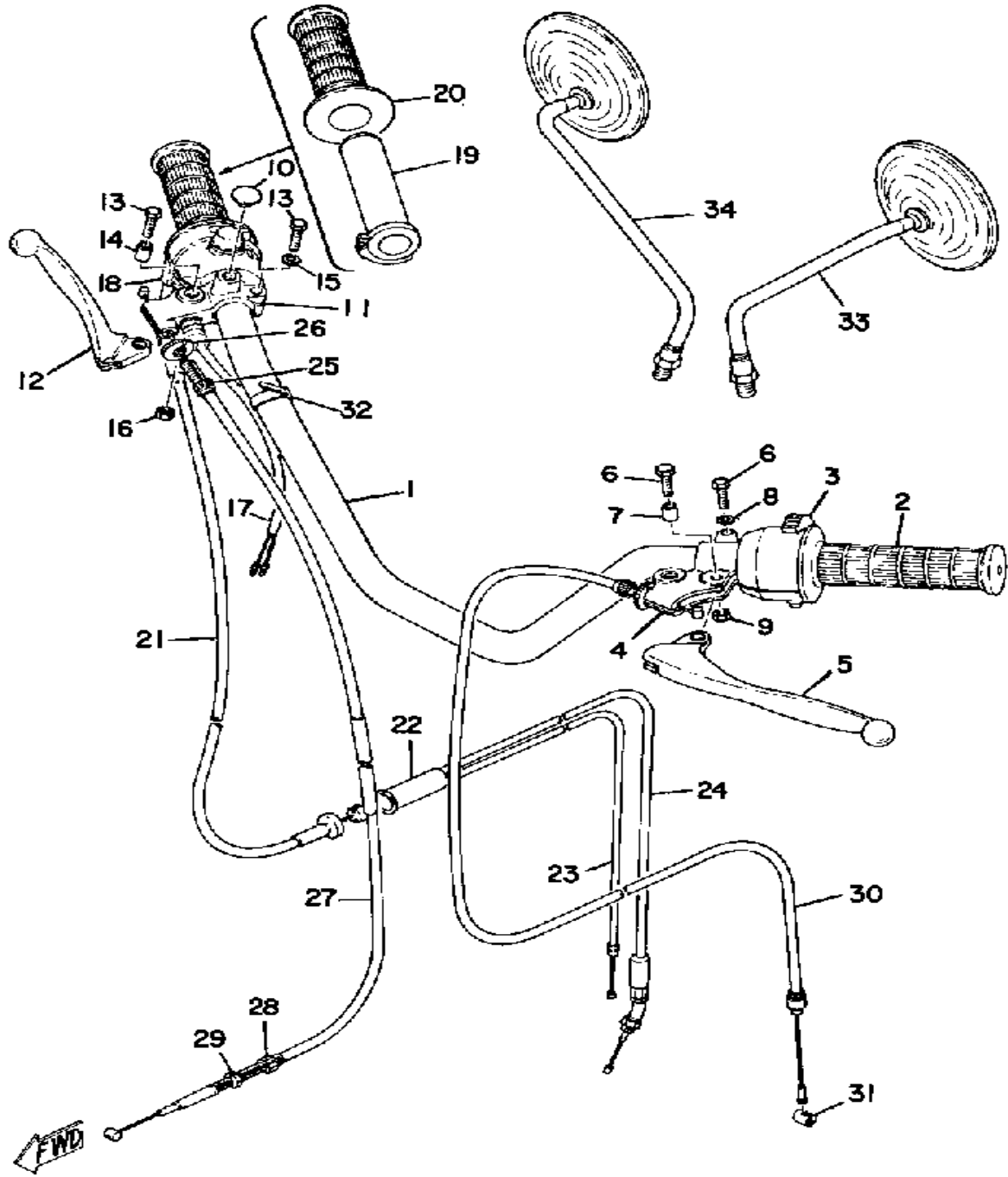
Ref. No.	Part Number	Description	Qty	Remarks
1	156-23411-00-00	RACE, BALL 1	1	
2	93501-04011-00	BALL	19	
3	156-23412-00-00	RACE, BALL 2	1	
4	22F-23412-01-00	RACE, BALL 2	1	
5	93503-16010-00	BALL	22	
6	22F-23411-01-00	RACE, BALL 1	1	
7	122-23416-00-00	COVER, BALL RACE 2	1	
8	90179-25033-00	NUT	1	
9	(307-23435-00-98)	CROWN, HANDLE	1	FROSTING BLACK
10	164-23441-00-98	HOLDER, HANDLE UPPER ...	1	FROSTING BLACK
11	92990-08100-00	WASHER	4	
12	97313-08035-00	BOLT, HEXAGON	4	
13	90209-10224-00	WASHER, SPEC"LSHAPE (164-23443-00)	1	
14	90105-10006-00	BOLT, WASHER BASED	1	
15	(137-23480-00-00)	STEERING LOCK ASSEMBLY .	1	
16	98701-06014-00	SCREW, FLAT HEAD	2	

HANDLE - WIRE



Ref. No.	Part Number	Description	Qty	Remarks
1	(337-26111-00-00)	HANDLEBAR	1	
2	341-26241-00-00	GRIP LH	1	
3	360-83973-02-00	SWITCH, HANDLE 3	1	
4	341-82911-00-00	. HOLDER, LEVER 1	1	
5	214-83912-00-00	. LEVER 1	1	
6	97023-06020-00	BOLT (3XF)	2	
7	214-83913-00-00	. COLLAR, LEVER 1	1	
8	92995-06100-00	. WASHER, SPRING	1	
9	95380-06700-00	. NUT	1	
10	90338-09012-00	PLUG	1	
11	361-82920-93-00	. HOLDER, LEVER 2 (36182-92131-00)	1	
12	233-83922-30-00	. LEVER R	1	
13	97023-06020-00	. BOLT (3XF)	2	
14	214-83913-00-00	. COLLAR, LEVER 1	1	
15	92995-06100-00	. WASHER, SPRING	1	
16	95380-06700-00	. NUT	1	
17	395-83980-00-00	STOP SWITCH ASSEMBLY ...	1	
18	(465-83976-01-00)	SWITCH, HANDLE 1	1	
19	214-26243-00-00	TUBE, THRTL GUIDE	1	
20	235-26242-10-00	GRIP RH	1	
21	465-26311-00-00	CABLE, THROTTLE 1	1	
22	214-26261-00-00	CONNECTOR, CABLE	1	
23	336-26312-00-00	CABLE, THROTTLE 2	1	
24	(336-26321-01-00)	CABLE, PUMP	1	
25	90123-08046-00	BOLT	2	
26	90179-08148-00	NUT	2	
27	(336-26341-10-00)	CABLE, BRAKE	1	
28	90123-06011-00	BOLT	1	

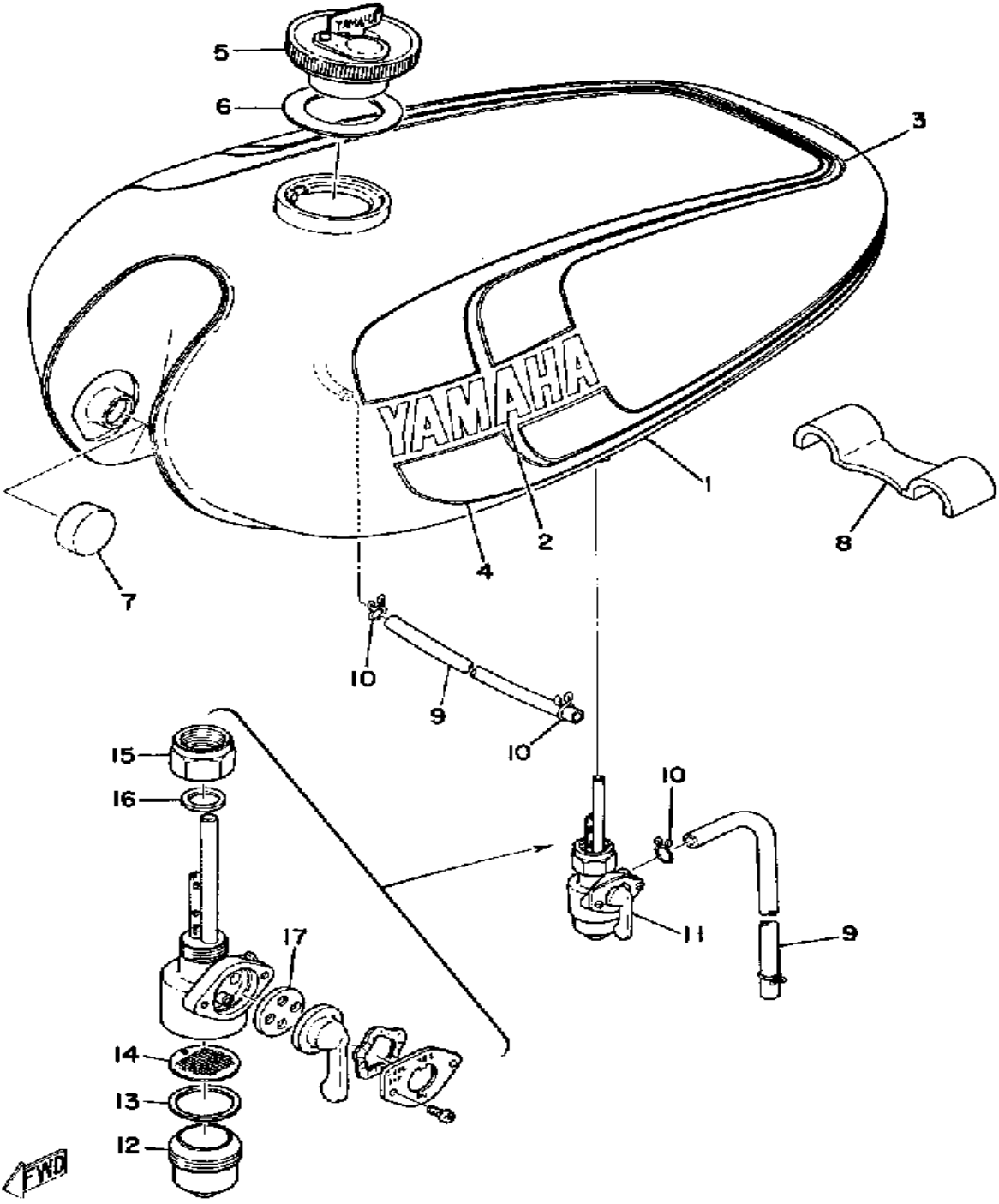
CONTINUED ON NEXT FRAME ►



HANDLE - WIRE

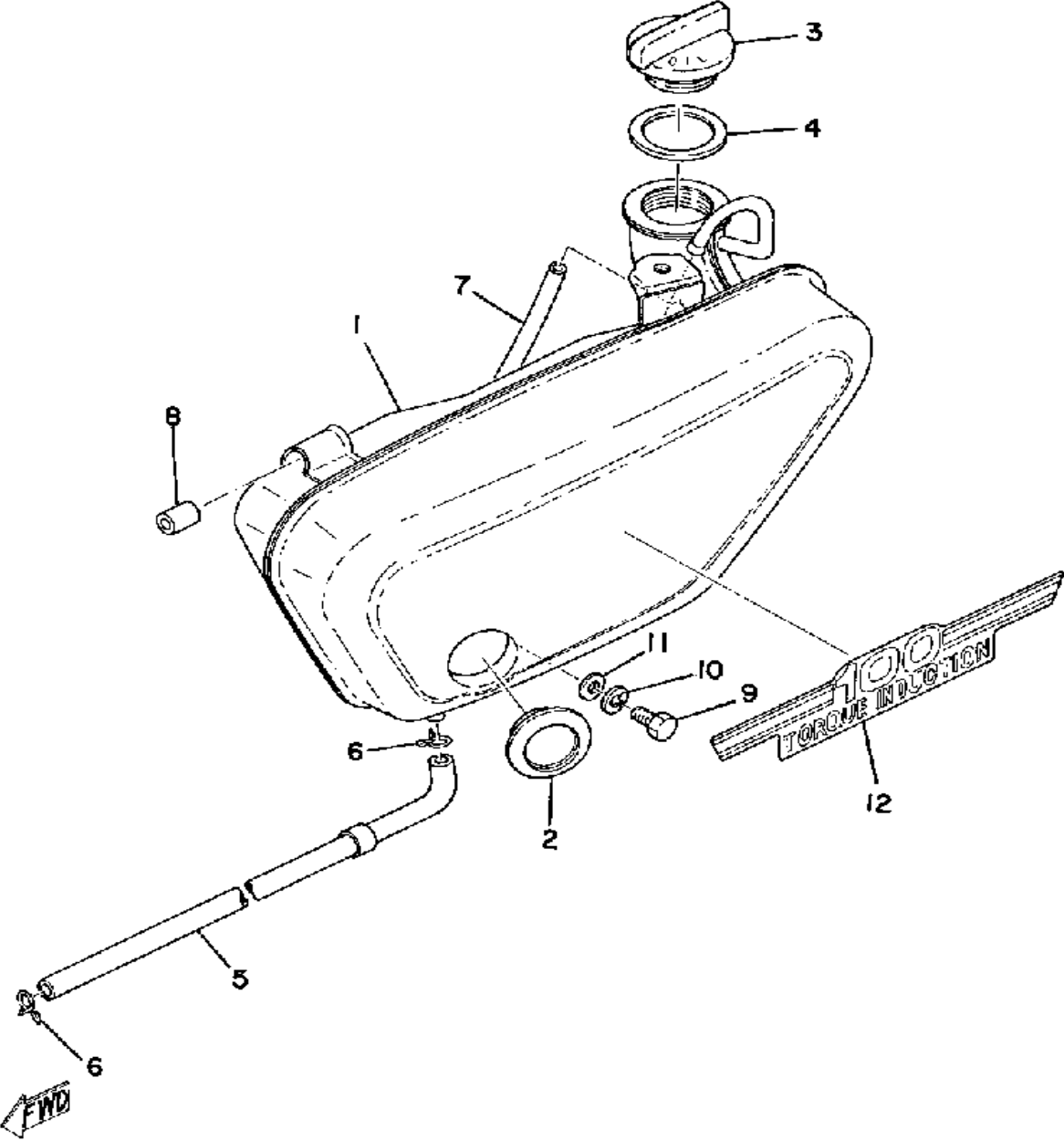
Ref. No.	Part Number	Description	Qty	Remarks
29	90179-06143-00	NUT, SPEC'L SHAPE	1	
30	336-26335-10-00	CABLE, CLUTCH	1	
31	164-26363-00-00	END, CABLE	1	
32	437-83936-01-00	BAND, SWITCH CORD	2	
33	341-26290-01-00	BACK MIRROR RH (341-26290-01)	1	
34	341-26290-01-00	BACK MIRROR RH (341-26290-01)	1	OPTIONAL PARTS
-1	360-82910-02-00	LEVER HOLDER ASSEMBLY 1 (360-82910-00)	1	
-2	361-82920-93-00	HOLDER, LEVER 2 (36182-92131-00)	1	

FUEL TANK



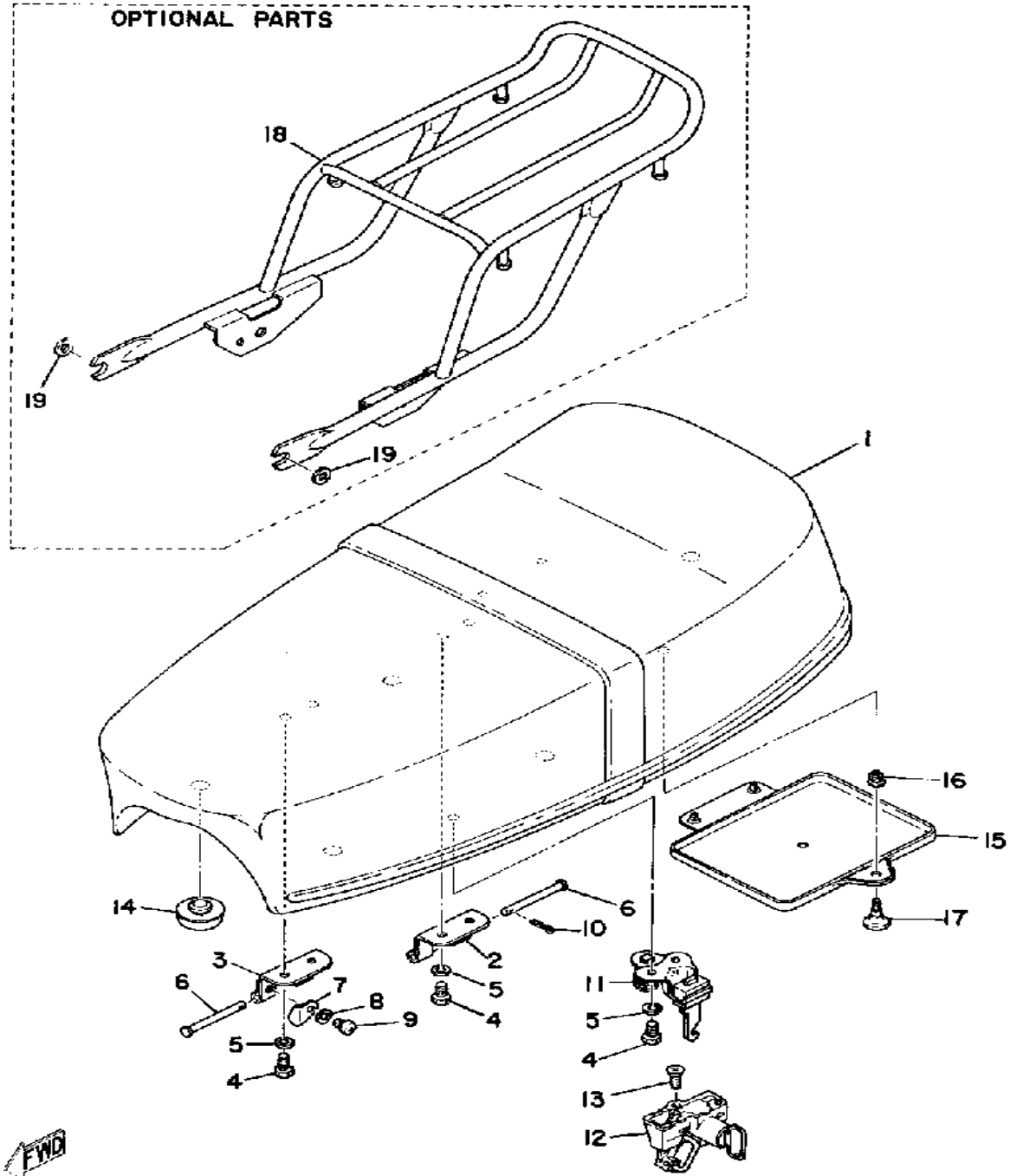
Ref. No.	Part Number	Description	Qty	Remarks
1	(463-24110-01-X1)	FUEL TANK	1	COMP. GREEN METALLIC
2	322-24161-00-00	. EMBLEM 1	2	
3	(465-24254-20-00)	GRAPHIC, FUEL TNK 7	1	
	(465-24255-20-00)	GRAPHIC, FUEL TNK 8	1	
4	(465-24256-20-00)	GRAPHIC, FUEL TNK 9	1	
	(465-24257-20-00)	GRPHC, FUEL TANK 0	1	
5	3FR-24602-00-00	CAP ASSEMBLY.	1	
6	498-24612-00-00	. GASKET, CAP	1	
7	122-24181-00-00	DAMPER, LOCATING 1	2	
8	(307-24182-00-00)	DAMPER, LOCATING 2	1	
9	90445-09083-00	HOSE	2	
10	90467-08003-00	CLIP	4	
11	304-24500-12-00	FUEL COCK ASSEMBLY 1 ...	1	
12	1A0-24521-01-00	. CUP, FILTER	1	
13	132-24522-00-00	. GASKET	1	
14	304-24515-00-00	. NET, FILTER 2	1	
15	132-24531-00-00	. NUT	1	
16	434-24532-00-00	. GASKET	1	
17	137-24523-00-00	. GASKET	1	

OIL TANK



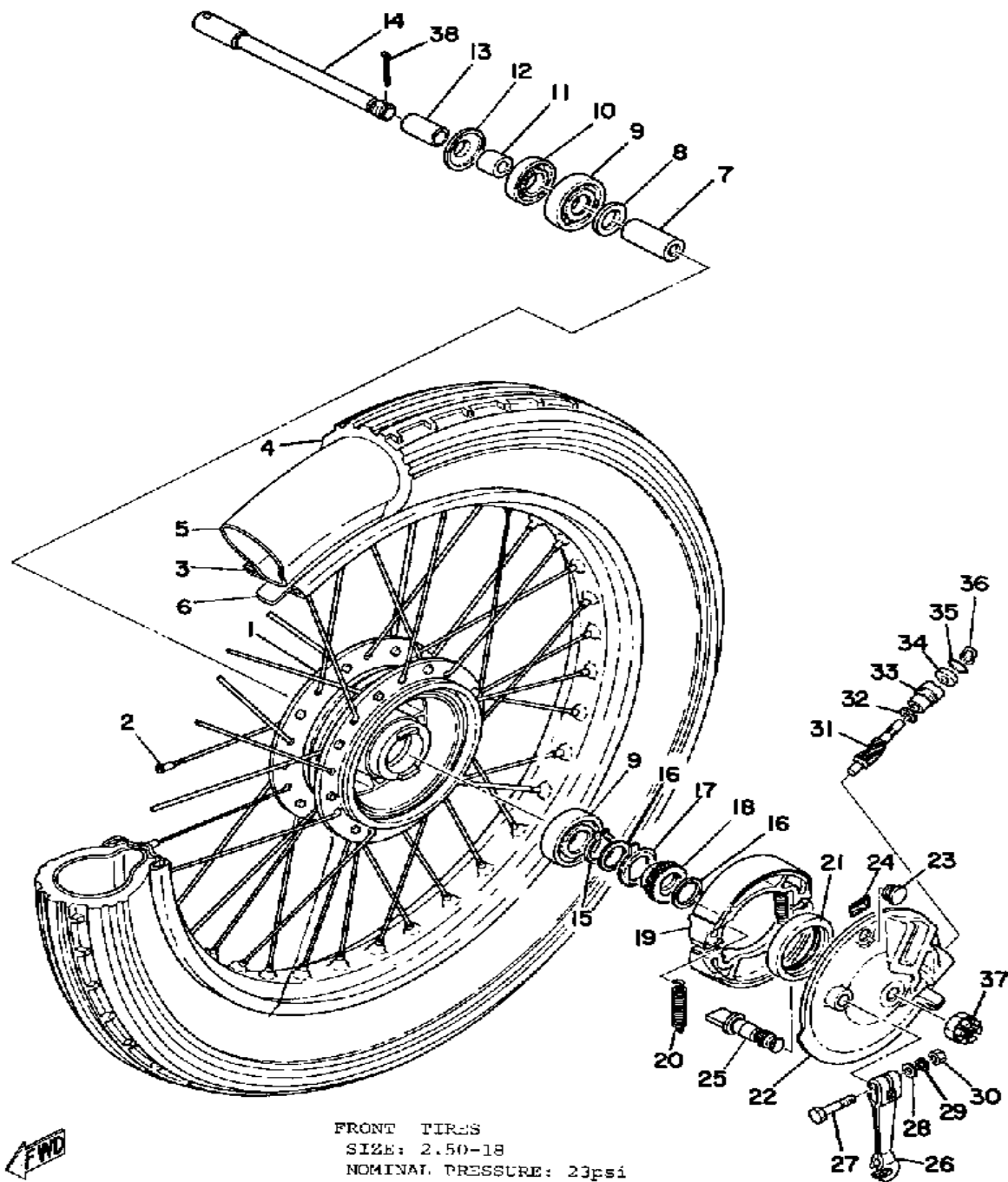
Ref. No.	Part Number	Description	Qty	Remarks
1	(463-21705-02-L2)	OIL TANK ASSEMBLY	1	COMP. GREEN METALLIC
2	214-21761-00-00	. GAUGE, LEVEL	1	
3	214-21771-00-00	BODY, CAP	1	
4	90430-29114-00	GASKET	1	
5	90445-09107-00	HOSE	1	
6	90467-08003-00	CLIP	2	
7	90445-09111-00	HOSE	1	
8	437-21779-00-00	DAMPER, LOCATING 2	1	
9	97013-06012-00	BOLT	2	
10	92995-06100-00	WASHER, SPRING	2	
11	90201-06038-00	WASHER, PLATE	2	
12	(465-21781-00-00)	EMBLEM 1	1	

SEAT



Ref. No.	Part Number	Description	Qty	Remarks
1	(463-W2472-02-00)	DOUBLE SEAT ASSEMBLY ...	1	
2	371-24726-01-00	HINGE, SEAT	1	
3	(463-24726-00-00)	HINGE, SEAT	1	
4	97013-06012-00	BOLT	6	
5	92995-06100-00	WASHER, SPRING	6	
6	91701-05055-00	PIN, CLEVIS	2	
7	(463-24756-00-00)	COVER, TAIL	1	N/A
8	92995-06100-00	WASHER, SPRING	1	
9	98580-06008-00	SCREW, PAN HEAD	1	
10	90468-10050-00	CLIP	1	
11	371-24728-02-00	BRACKET, SEAT	1	
12	584-24705-00-00	SEAT LOCK ASSEMBLY	1	
13	98603-06012-00	SCREW, OVAL HEAD (92701-06012)	2	
14	1L9-24741-00-00	PAD, SEAT	5	
15	2R6-28185-00-00	LID	1	
16	90480-06007-00	GROMMET (341-28187-00)	1	
17	341-28188-00-00	PLUNGER	1	
1-1	(463-24731-01-00)	COVER, DOUBLE SEAT	1	

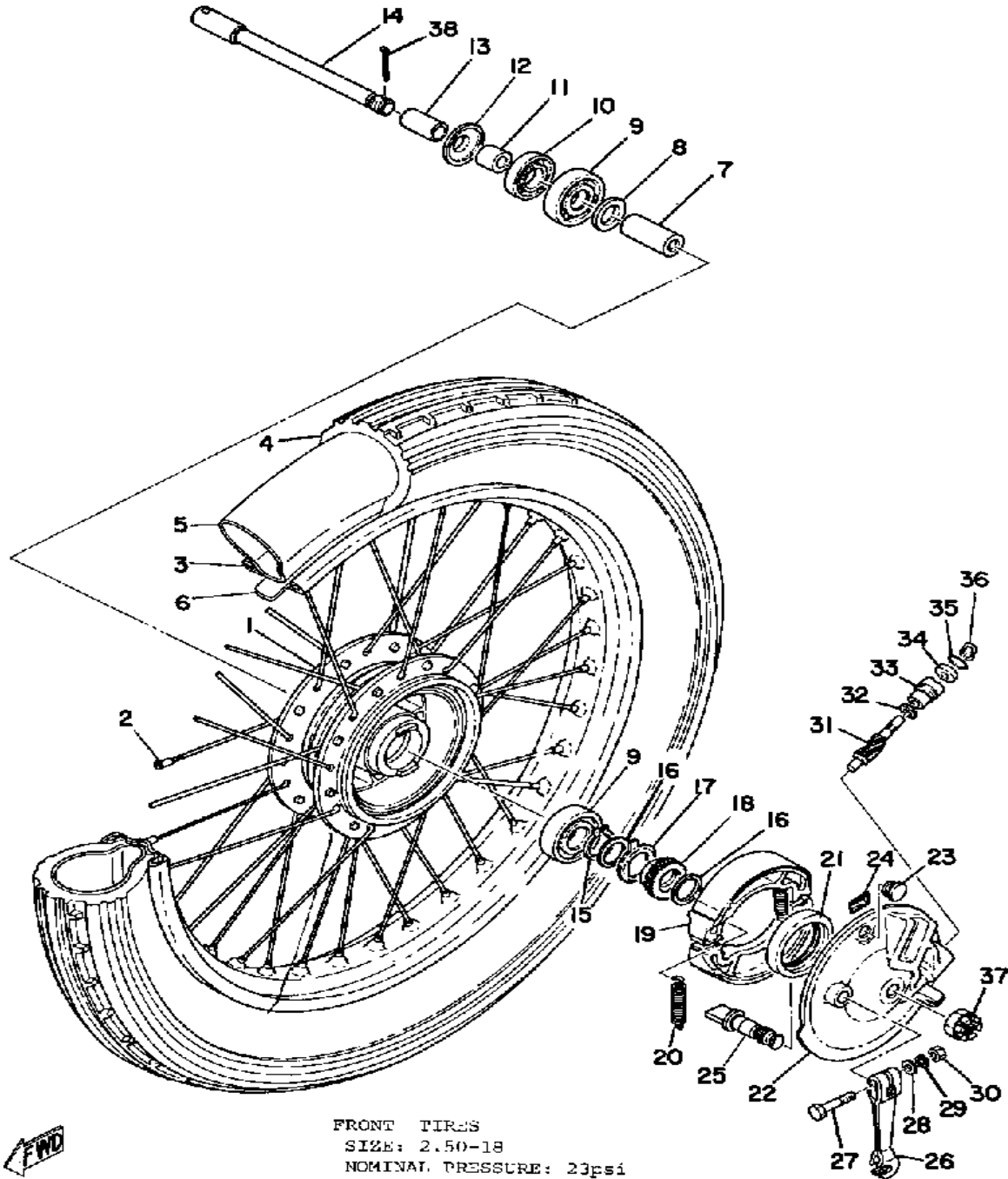
FRONT WHEEL



Ref. No.	Part Number	Description	Qty	Remarks
1	(248-25111-00-38)	HUB, FRONT	1	
	(248-25196-90-00)	SPOKE SET, INNER 1	18	
	(248-25197-90-00)	SPOKE SET, OUTER 1	18	
2	(248-25104-00-00)	SPOKE SET, FRONT	1	
3	94414-18007-00	RIM (1.40X18)	1	
4	(94125-18311-00)	250X18 YOKO Y5 6	1	
5	94225-18194-00	TUBE (2.50-18)	1	
6	94325-18043-00	BAND, RIM	1	
7	90560-12261-00	SPACER	1	
8	109-25315-00-00	FLANGE, SPACER	1	
9	93306-30103-00	BEARING (B6301Z)	2	
10	93102-18008-00	OIL SEAL	1	
11	90387-12095-00	COLLAR	1	
12	2K5-25118-00-00	COVER, HUB DUST	1	
13	90387-12099-00	COLLAR	1	
14	(382-25181-01-00)	AXLE, WHEEL	1	
15	99009-20400-00	CIRCLIP	1	
16	90201-20269-00	WASHER, PLATE	2	
17	183-25149-00-00	CLUTCH, METER	1	
18	(248-25135-00-00)	GEAR, DRIVE	1	
19	10X-W2536-00-00	BRAKESHOE SET-2PCS	2	
20	90506-16150-00	SPRING, TENSION (102-25333-00)	2	
21	93105-47007-00	OIL SEAL	1	
22	(437-25120-10-00)	BRAKE SHOE PLT ASSEMBLY	1	
23	90480-10068-00	. GROMMET	1	
24	(437-25134-00-00)	LABEL, INDICATOR	1	
25	122-25351-02-00	CAMSHAFT	1	
26	137-25155-00-00	LEVER, CAMSHAFT 1	1	

CONTINUED ON NEXT FRAME ►

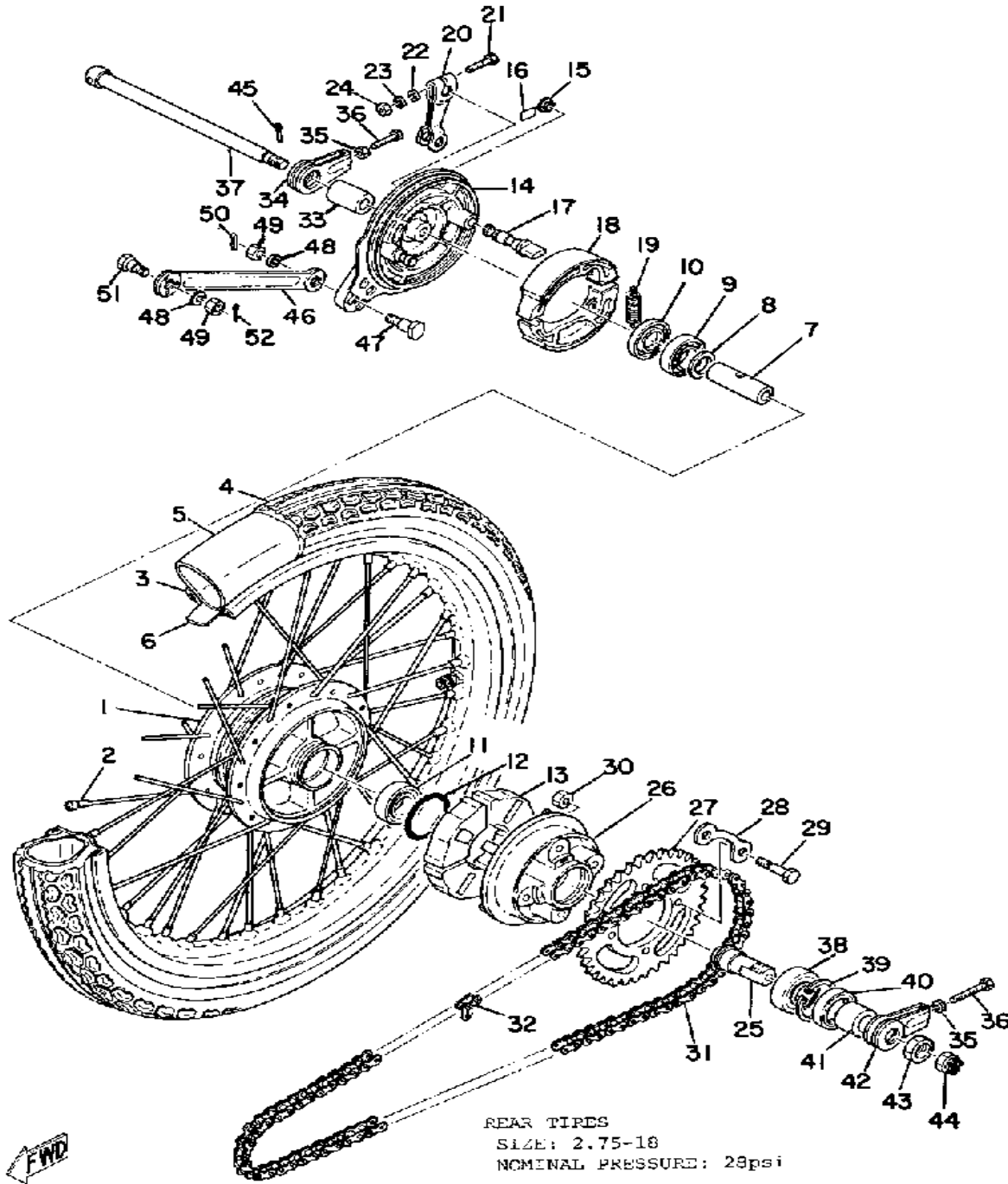
FRONT WHEEL



Ref. No.	Part Number	Description	Qty	Remarks
27	97021-06030-00	BOLT	1	
28	90201-06038-00	WASHER, PLATE	1	
29	92995-06100-00	WASHER, SPRING	1	
30	95380-06600-00	NUT	1	
31	214-25138-00-00	GEAR, METER	1	
32	90201-07076-00	WASHER, PLATE	1	
33	109-25136-00-00	BUSH	1	
34	93104-07003-00	OIL SEAL	1	
35	93210-14104-00	O-RING	1	
36	102-25137-00-00	RING, STOP	1	
37	90171-12005-00	NUT, CASTLE	1	
38	91401-30030-00	PIN, COTTER	1	

FWD

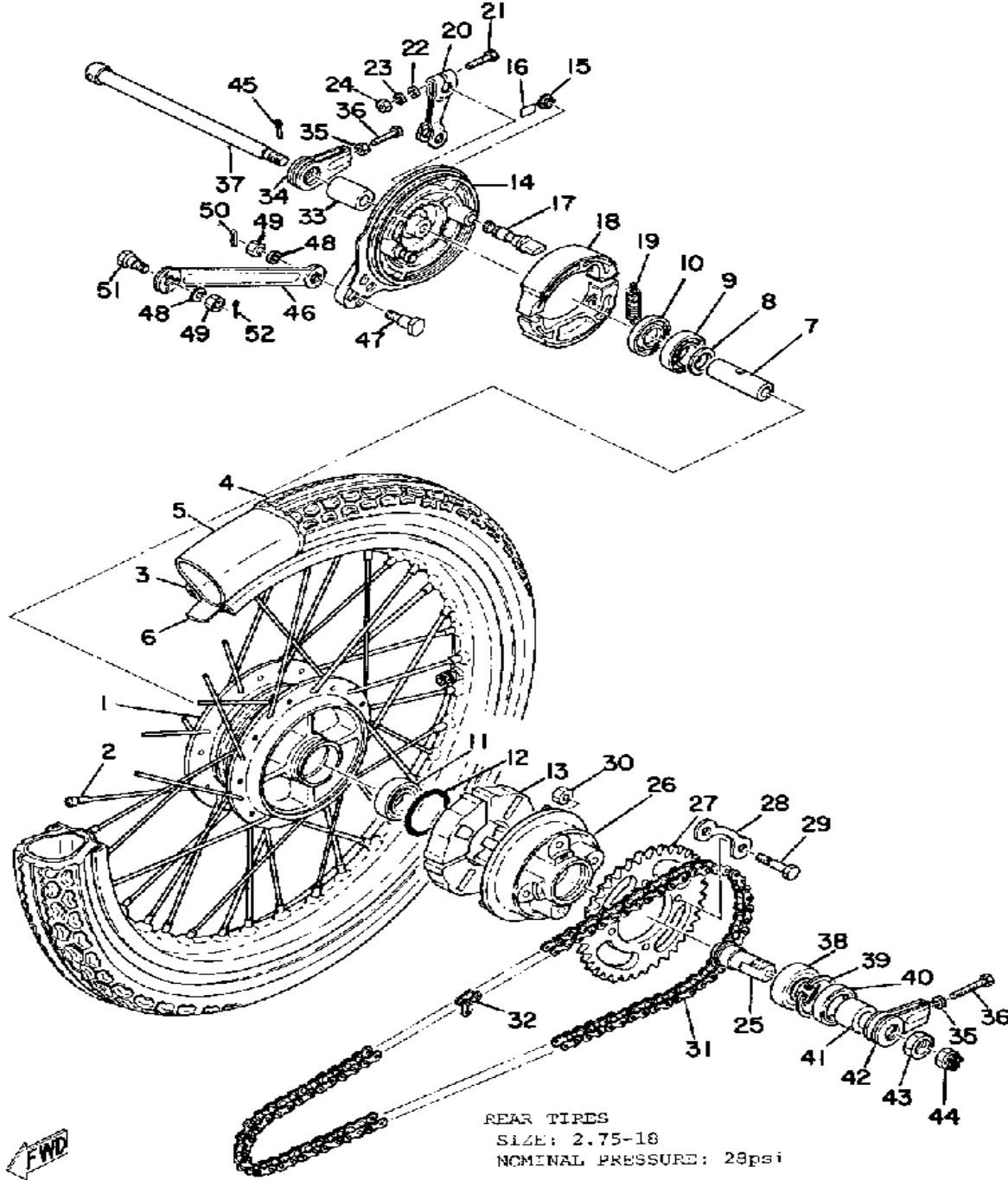
REAR WHEEL



Ref. No.	Part Number	Description	Qty	Remarks
1	(132-25311-00-38)	HUB, REAR	1	
2	(164-25304-00-00)	SPOKE SET, REAR	1	
3	94414-18007-00	RIM (1.40X18)	1	
4	(94127-18312-00)	275X18 YOKO Y93C	1	
5	(94227-18010-00)	TUBE	1	
6	94325-18043-00	BAND, RIM	1	
7	90560-12145-00	SPACER	1	
8	109-25315-00-00	FLANGE, SPACER	1	
9	93306-30101-00	BEARING (B6301)	1	
10	93104-21016-00	OIL SEAL, SO-TYPE	1	
11	93306-30103-00	BEARING (B6301Z)	1	
12	93210-41041-00	O-RING	1	
13	304-25364-01-00	DAMPER	4	
14	(339-25320-10-00)	BRAKE SHOE PLT ASSEMBLY	1	
15	90480-10068-00	. GROMMET	1	
16	(437-25134-00-00)	LABEL, INDICATOR	1	
17	122-25351-02-00	CAMSHAFT	1	
18	10X-W2536-00-00	BRAKESHOE SET-2PCS	2	
19	90506-16150-00	SPRING, TENSION (102-25333-00)	2	
20	122-25355-00-0	UNAVAILABLE IN PRICE BOOK	1	
21	97021-06030-00	BOLT	1	
22	90201-06038-00	WASHER, PLATE	1	
23	92995-06100-00	WASHER, SPRING	1	
24	95380-06600-00	NUT	1	
25	167-25387-00-00	AXLE, SPROCKET	1	
26	296-25366-01-98	CLUTCH, HUB	1	
27	183-25435-39-00	SPROCKET, DRIVN 35TWHEEL (35T)	1	

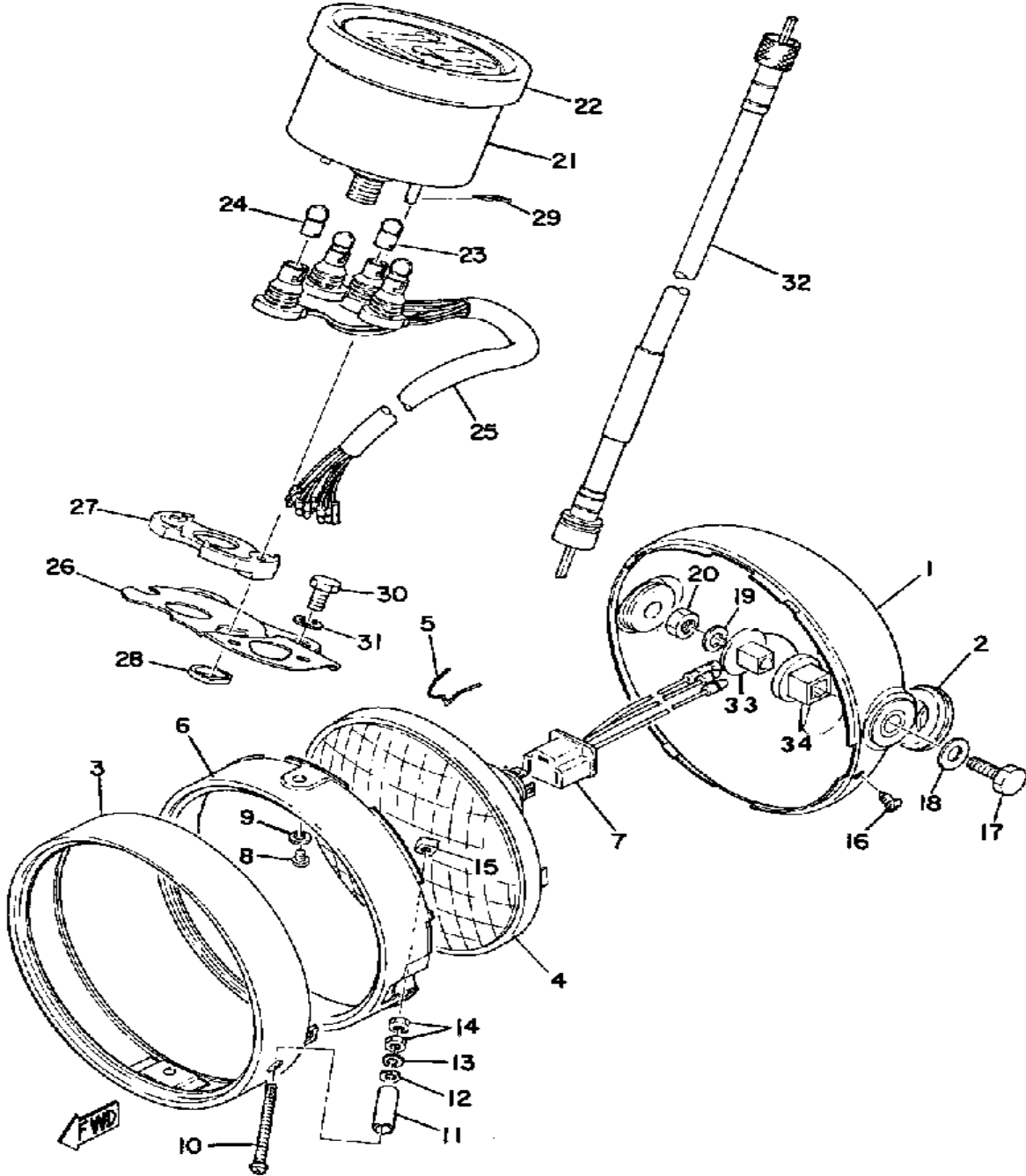
CONTINUED ON NEXT FRAME ►

REAR WHEEL



Ref. No.	Part Number	Description	Qty	Remarks
27	183-25436-39-00	SPROCKET, DRVN 36T (36T) (183-25436-10-33)	1	STD
	183-25437-20-00	SPROCKET, DRVN 37T		
28	102-25412-00-00	WASHER	2	
29	90101-08672-00	BOLT	4	
30	95333-08600-00	NUT, HEXAGON	4	
31	94580-24116-00	428 STD 116L	1	
32	94680-24001-00	. CHAIN JOINT (DID 428)	1	
33	90387-12102-00	COLLAR	1	
34	241-25389-10-00	PULLER, CHAIN 2	1	
35	95380-06600-00	NUT	2	
36	90101-06016-00	BOLT	2	
37	390-25381-01-00	AXLE, WHEEL	1	
38	93306-00406-00	BEARING (B6004Z)	1	
39	99009-42500-00	CIRCLIP	1	
40	93106-30004-00	OIL SEAL	1	
41	90387-18144-00	COLLAR	1	
42	241-25388-00-00	PULLER, CHAIN 1	1	
43	90170-18165-00	NUT	1	
44	90171-10004-00	NUT, CASTLE	1	
45	91490-20020-00	PIN, COTTER	1	
46	27L-25371-00-00	BAR, TENSION	1	
47	90109-08183-00	BOLT	1	
48	92990-08100-00	WASHER	2	
49	95303-08700-00	NUT	2	
50	90468-10050-00	CLIP	1	
51	90109-08368-00	BOLT	1	
52	91490-20020-00	PIN, COTTER	1	

HEAD LAMP - SPEEDOMETER

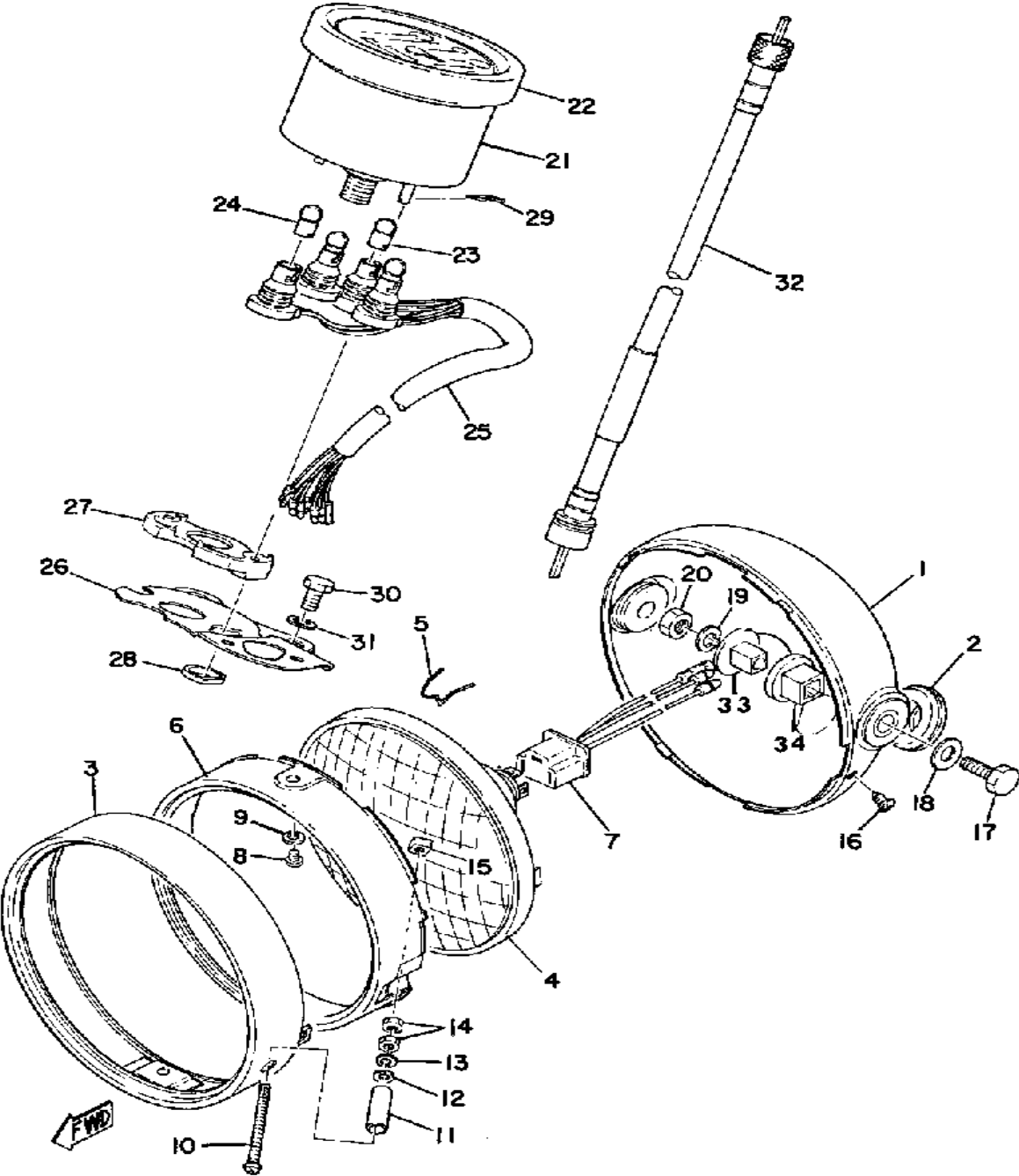


Headlight/Tailight Ratings	6V25W/25W	6V5.3W
----------------------------	-----------	--------

Ref. No.	Part Number	Description	Qty	Remarks
1	(507-84330-60-L2)	BODY ASSEMBLY	1	COMP. GREEN METALLIC
2	150-84153-00-00	. GROMMET, WRHRNES	2	
3	498-84115-60-00	. RIM, HEADLIGHT	1	
4	443-84120-61-00	. LENS ASSEMBLY	1	
5	148-84324-00-00	. SPRING, REFLECTOR	3	
6	498-84195-60-00	. RING, RETAINING	1	
7	(465-84312-60-00)	SOCKET	1	
8	438-84194-60-00	. RING, MOUNTING	2	
9	92990-05100-00	. WASHER, SPRING	2	
10	90157-04001-00	. SCREW, PAN HEAD	1	
11	438-84133-60-00	. COLLAR, SCREW	1	
12	92990-04200-00	. WASHER, PLAIN	1	
13	92901-04100-00	. WASHER, SPRING	1	
14	95301-04600-00	. NUT	2	
15	198-84334-60-00	. NUT, ADJUSTING	1	
16	90152-05005-00	SCREW, COUNTERSUNK	1	
17	97013-08025-00	BOLT	2	
18	92990-08200-00	WASHER, PLAIN	2	
19	92990-08100-00	WASHER	2	
20	95333-08600-00	NUT, HEXAGON	2	
21	(465-83510-60-00)	SPEEDOMETER ASSEMBLY	1	MILE/H
22	336-83513-00-00	. DAMPER	1	
23	388-83517-10-00	. BULB (HIGH BEAM) (6V/1.5W)	1	
24	122-83516-10-00	. BULB (122-83516-10)	3	
25	(465-83520-60-00)	SOCKET CORD ASSEMBLY	1	
26	(507-83519-00-33)	BRACKET, METER	1	YAMAHA BLACK
27	237-83523-00-00	DAMPER	1	
28	90209-05029-00	WASHER, SPEC'L SHAP (214-83524-00)	2	

CONTINUED ON NEXT FRAME ➤

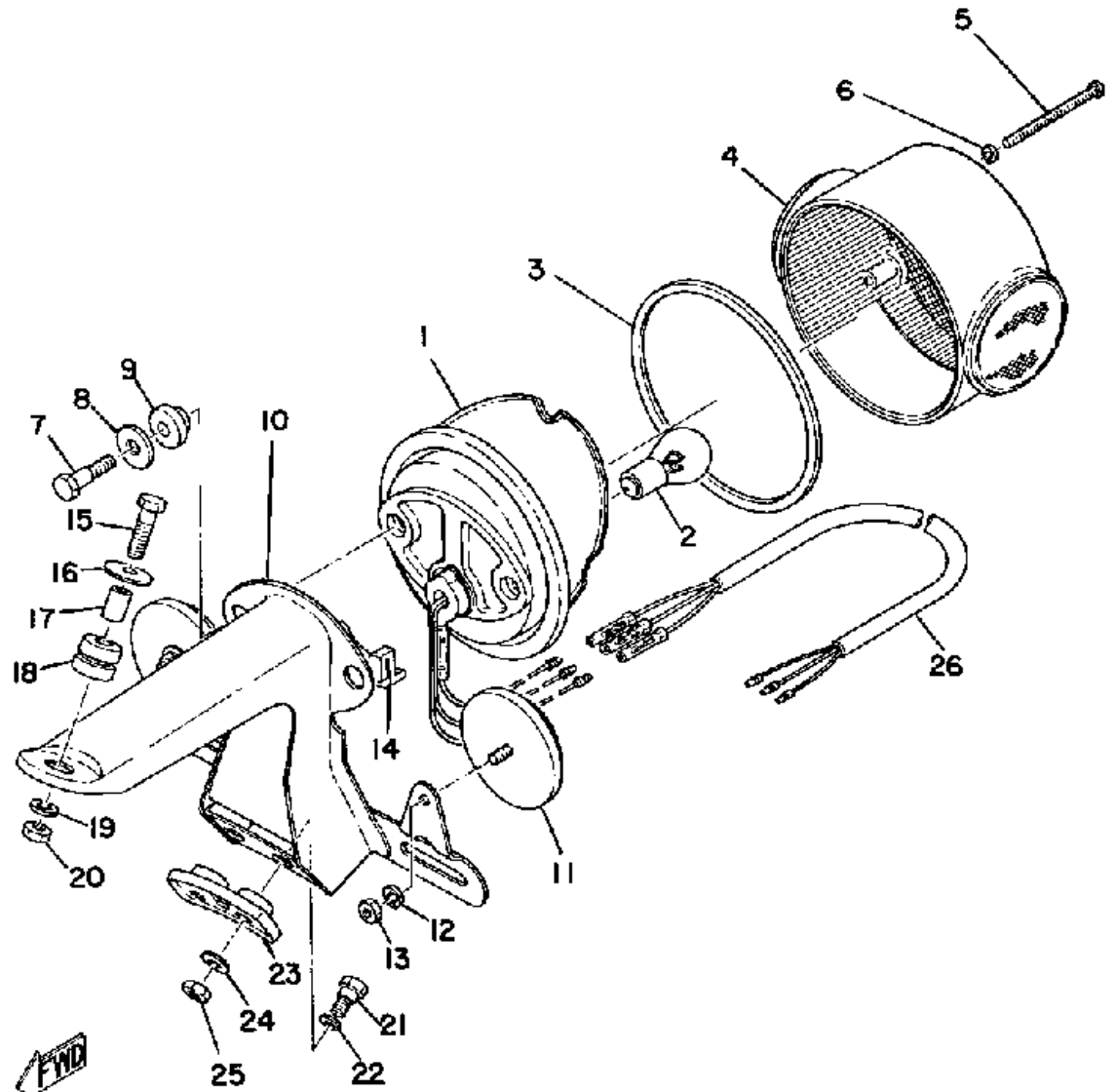
HEAD LAMP - SPEEDOMETER



Headlight/Tailight Ratings	6V25W/25W	6V5.3W
----------------------------	-----------	--------

Ref. No.	Part Number	Description	Qty	Remarks
29	90468-10050-00	CLIP	2	
30	97313-08018-00	BOLT, HEXAGON (97301-08016)	2	
31	92990-08100-00	WASHER	2	
32	336-83550-01-00	SPEEDOMETER CABLE	1	
33	(509-84338-60-00)	UNAVAILABLE IN PRICE BOOK	1	N/A
34	(214-84143-60-00)	DAMPER, HDLT STAY	1	M6-028
-1	UNA-VAILA-BL-EI	0 0		

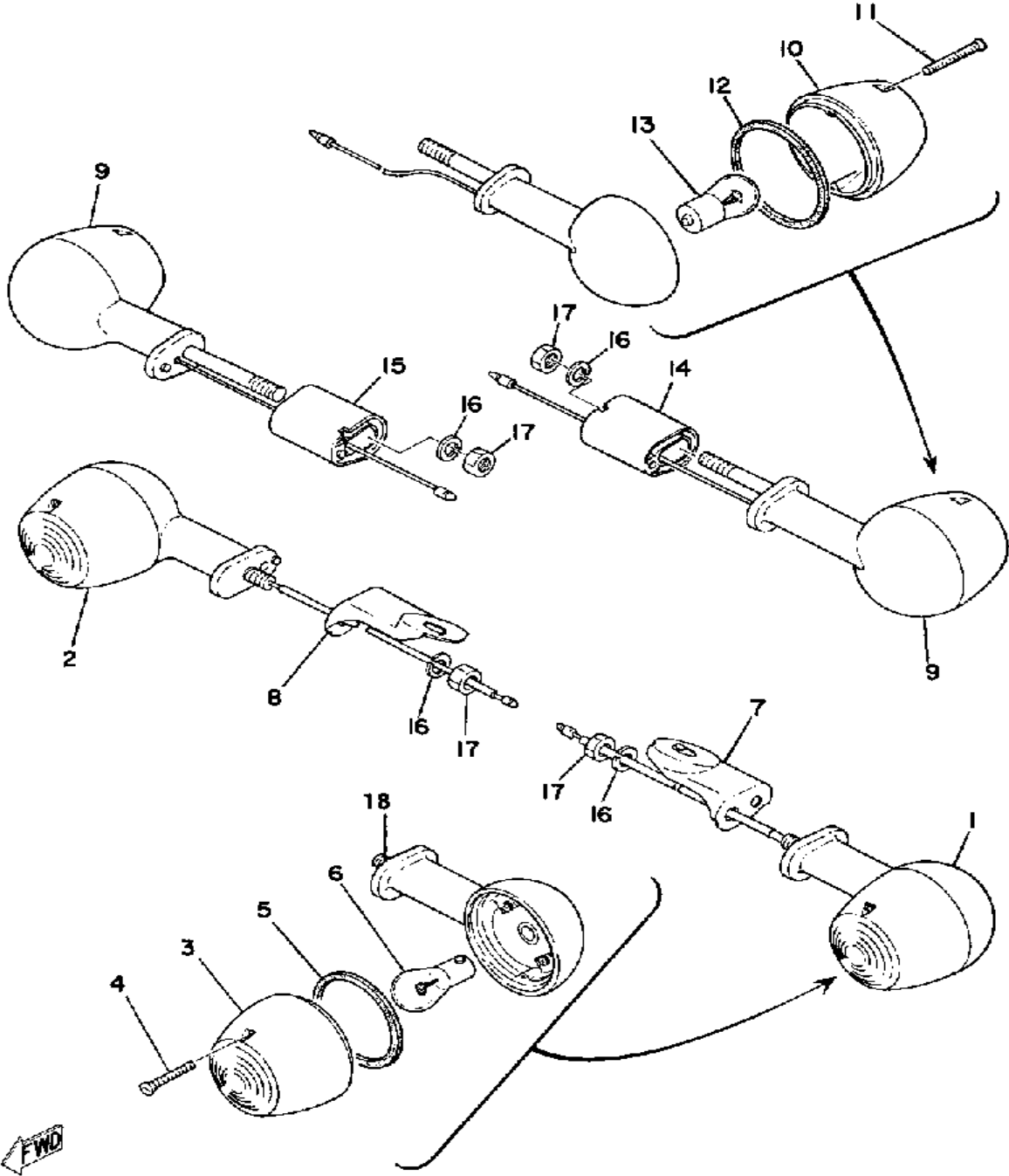
TAIL LAMP



Headlight/Taillight Ratings	6V25W/25W	6V5.3W

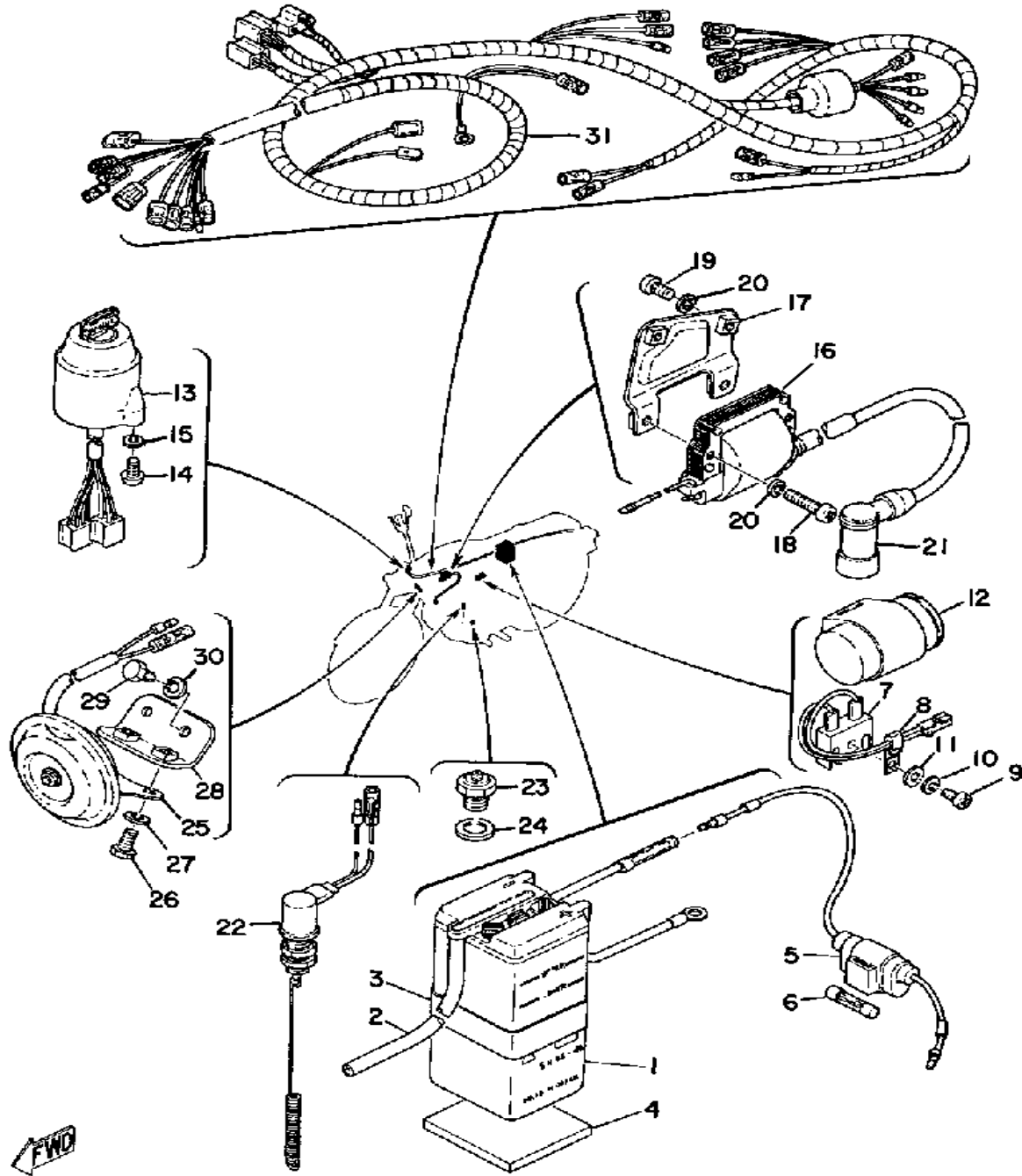
Ref. No.	Part Number	Description	Qty	Remarks
1	(444-84711-61-00)	BASE, TAILLIGHT	1	
2	1M1-84514-60-00	. BULB	1	
3	275-84523-60-00	. GASKET, LENS	1	
4	341-84721-60-00	. LENS, TAILLIGHT	1	
5	98580-04055-00	. SCREW, LENS FITTING	3	
6	341-84722-60-00	. WASHER	3	
7	(479-84526-00-00)	SCREW	2	
8	2H7-84754-00-00	WASHER, SPECIAL	2	
9	275-84527-60-00	DAMPER	2	
10	(479-84551-01-35)	BRACKET, LICENCE	1	SILVER
11	449-85131-02-00	REFLECTOR, REAR 1	2	
12	92990-05100-00	WASHER, SPRING	2	
13	95380-05600-00	NUT	2	
14	(437-84527-60-00)	DAMPER	1	
15	97011-06025-00	BOLT (97001-06025)	1	
16	90209-06095-00	WASHER, SPEC'L SHAP (102-28323-00)	1	
17	90387-07390-00	COLLAR	1	
18	90480-14023-00	GROMMET	1	
19	92995-06100-00	WASHER, SPRING	1	
20	95380-06600-00	NUT	1	
21	90109-06017-00	BOLT	2	
22	92990-08200-00	WASHER, PLAIN	2	
23	214-84553-01-00	DAMPER	1	
24	92995-06100-00	WASHER, SPRING	2	
25	95380-06600-00	NUT	2	
26	(316-84717-70-00)	CORD, TAILLIGHT	1	
-1	437-84510-62-00	TAILLIGHT UNIT ASSEMBLY	1	

FLASHER LAMP



Ref. No.	Part Number	Description	Qty	Remarks
1	232-83320-62-93	FRT FLSHR LITE ASSEMBLY	1	
2	232-83320-62-93	FRT FLSHR LITE ASSEMBLY	1	
3	183-83312-70-00	. LENS, FLASHER	2	AMBER
4	183-83333-71-00	. SCREW, LENS FITTING	4	
5	183-83313-70-00	. GASKET, FLSHR LENS	2	
6	115-83311-60-00	. BULB, FLASHER	2	
7	(507-83318-00-00)	STAY, FLASHER 1	1	
8	(507-83328-00-00)	STAY, FLASHER 2	1	
9	(388-83330-60-93)	R FLSHR LITE ASSEMBLY	2	
10	211-83332-75-00	. LENS, FLASHER	2	RED
11	183-83333-71-00	. SCREW, LENS FITTING	4	
12	183-83313-70-00	. GASKET, FLSHR LENS	2	
13	115-83311-60-00	. BULB, FLASHER	2	
14	(353-83316-30-00)	COLLAR, FLASHER 1	1	
15	(353-83326-30-00)	COLLAR, FLASHER 2	1	
16	92990-08100-00	WASHER	4	
17	95333-08600-00	NUT, HEXAGON	4	
18	360-83367-09-00	BOLT, STUD	2	M4-091

ELECTRICAL



Ref. No.	Part Number	Description	Qty	Remarks
1	BTY-6N4A4-D0-00	YUASA 6N4A-4D (6N4A-4D) ...	1	FURUKAWA
2	90445-08047-00	HOSE (168-82112-00)	1	
3	214-82124-00-00	BAND, BATTERY	1	
4	55K-82150-01-00	FUSE HOLDER ASS'Y (55K-82150-00-00)	1	
	583-24182-00-00	DAMPER, LOCATING 2	1	
6	116-82151-00-00	. FUSE (10A)	2	
7	353-81970-63-00	RECTIFIER ASSEMBLY	1	
8	90465-06038-00	CLAMP	1	
9	98580-05020-00	SCREW, PAN HEAD	1	
10	92990-05100-00	WASHER, SPRING	1	
11	92990-05200-00	WASHER, PLAIN	1	
12	542-83350-60-00	FLASHER RELAY ASSEMBLY .	1	
13	465-82508-20-00	MAIN SWITCH ASSEMBLY ...	1	
14	98580-05010-00	SCREW, PAN HEAD	2	
15	92990-05100-00	WASHER, SPRING	2	
16	1Y8-82310-40-00	IGNITION COIL ASSEMBLY ...	1	
17	375-82316-01-00	BRACKET, IGN COIL	1	
18	98511-06025-00	SCREW PAN HEAD (92501-06025)	2	
19	98580-06012-00	SCREW, PAN HEAD	2	
20	92995-06100-00	WASHER, SPRING	4	
21	56J-82370-00-00	PLUG CAP ASSEMBLY	1	
	808-82370-10-00	PLUG CAP ASSEMBLY	1	ALTERNATE PARTS
22	(336-82530-00-00)	STOP SWITCH ASSEMBLY ...	1	
23	136-82540-00-00	NEUTRAL SWITCH ASSEMBLY	1	
24	37R-82543-00-00	GASKET	1	
25	(463-83371-11-00)	HORN	1	
26	97011-06016-00	BOLT	2	

CONTINUED ON NEXT FRAME ►

RS100B

MOTORCYCLE
M4-096

1975 SERVICE DATA

MODEL - IBM I.D. NUMBER	RS100B	465
Starting Engine and Frame Number	465-000101	
Basic Color (fuel tank)	Competition Green Metallic	
Net Weight	196 lbs.	
ENGINE (type, induction system)	2-stroke, 7-port, Single, Reed Valve, Air-cooled	
Bore x Stroke x Cylinder Displacement	52 x 45.6mm x 1	97cc (5.92 CID)
Compression Ratio	6.8:1	
Piston Skirt Clearance (new/max.)	.030 ~ .035mm (.0012 ~ .0014")/0.1mm (.004")	
Ring End Gap (top/2nd/3rd)	0.15 ~ 0.35mm (.006 ~ .014")/Same/φ	
Ring Groove Clearance (top/2nd/3rd)	.03 ~ .08mm (.0012 ~ .0032")/Same/φ	
Valve Clearance (eng. cold) Intake/Exhaust	φ	
AUTOLUBE - Minimum Pump Stroke/Color Code	0.20 ~ 0.25mm (.008 ~ .010")	Black
CARBURETOR (mfr) (type) (I.D. number)	Mikuni VM20SH	46390
Main Jet	No. 110	
Needle Jet	O-6	
Jet Needle/Clip Position	4F10-3	
Cut Away	2.0	
Pilot Jet	No. 22.5	
Air Jet	0.5	
Starter Jet	No. 30	
Air Screw (turns out)	1½	
Float Level	21.0 ± 1.0mm	
Air Filter (type x quantity)	Wet Foam Rubber x 1	
DRIVE - Primary (type) (teeth) (ratio)	Helical Gear	74/19 3.894
Secondary (type) (teeth) (ratio)	DK42B, 102L	36/15 2.400
Transmission Ratios 1st (teeth) (ratio) (O.A.)	34/12	2.833 26.484
2nd	30/16	1.875 17.526
3rd	26/19	1.368 12.791
4th	24/22	1.091 10.197
5th	22/23	0.956 8.941
6th	φ	
CAPACITIES - Transmission	700cc (23.7 oz.) SAE10W30 Oil (Yamalube 4-cycle)	
Oil Tank or Engine Sump	1.6 qts. Yamalube 2-cycle	
Fuel Tank	2.4 gals. Low Lead or Unleaded (Regular)	
Front Forks	157cc (5.3 oz.) 10, 20 or 30 wt. Fork Oil*	
Rear Shocks	φ	
Tires (size/nominal pressure)	Front: 2.50-18/23psi	Rear: 2.75-18/28psi
ELECTRICAL - Charging System (mfr) (type)	Mitsubishi	Flywheel Magneto FOT02772
No Load Voltage Adj. (AC & DC generators)	φ	
Max. Generator (Magneto) Output	N/A	
Field Coil (and/or) Charging Coil Resistance	Yellow: 0.28Ω / Green: .08Ω / Green Red: 0.37Ω	
Battery (mfr) (model) (rating)	G.S. or F.B.	6N4A-4D 6V4AH
Headlight/Taillight Ratings	6V25W/25W	6V5.3W
Ign. Coil Min. Spark Gap/Pri. Res./Sec. Res.	6mm 4.5Ω	6.0KΩ
Condenser Capacity	0.30μf	
Point Gap /Spark Plug (type/gap)	0.3 ~ 0.4mm/NGK B-8HS or Champion L-78/0.5 ~ 0.6mm	
Timing (advanced) (retarded)	1.8 ± 0.15mm BTDC/φ	

N/A = Information Not Available
φ = Does Not Apply to This Model

*Available from Yamaha Parts Distributors, Inc.

©YAMAHA INTERNATIONAL CORPORATION, BUENA PARK, CALIFORNIA 10/5/74 Page 1 of 1

F-18

RS100B

MOTORCYCLE
M4-096

1975 SERVICE DATA

MODEL - IBM I.D. NUMBER	RS100B	465
Starting Engine and Frame Number	465-000101	
Basic Color (fuel tank)	Competition Green Metallic	
Net Weight	196 lbs.	
ENGINE (type, induction system)	2-stroke, 7-port, Single, Reed Valve, Air-cooled	
Bore x Stroke x Cylinder Displacement	52 x 45.6mm x 1	97cc (5.92 CID)
Compression Ratio	6.8:1	
Piston Skirt Clearance (new/max.)	.030 ~ .035mm (.0012 ~ .0014")/0.1mm (.004")	
Ring End Gap (top/2nd/3rd)	0.15 ~ 0.35mm (.006 ~ .014")/Same/φ	
Ring Groove Clearance (top/2nd/3rd)	.03 ~ .08mm (.0012 ~ .0032")/Same/φ	
Valve Clearance (eng. cold) Intake/Exhaust	φ	
AUTOLUBE - Minimum Pump Stroke/Color Code	0.20 ~ 0.25mm (.008 ~ .010")	Black
CARBURETOR (mfr) (type) (I.D. number)	Mikuni VM20SH	46390
Main Jet	No. 110	
Needle Jet	O-6	
Jet Needle/Clip Position	4F10-3	
Cut Away	2.0	
Pilot Jet	No. 22.5	
Air Jet	0.5	
Starter Jet	No. 30	
Air Screw (turns out)	1½	
Float Level	21.0 ± 1.0mm	
Air Filter (type x quantity)	Wet Foam Rubber x 1	
DRIVE - Primary (type) (teeth) (ratio)	Helical Gear	74/19 3.894
Secondary (type) (teeth) (ratio)	DK42B, 102L	36/15 2.400
Transmission Ratios 1st (teeth) (ratio) (O.A.)	34/12	2.833 26.484
2nd	30/16	1.875 17.526
3rd	26/19	1.368 12.791
4th	24/22	1.091 10.197
5th	22/23	0.956 8.941
6th	φ	
CAPACITIES - Transmission	700cc (23.7 oz.) SAE10W30 Oil (Yamalube 4-cycle)	
Oil Tank or Engine Sump	1.6 qts. Yamalube 2-cycle	
Fuel Tank	2.4 gals. Low Lead or Unleaded (Regular)	
Front Forks	157cc (5.3 oz.) 10, 20 or 30 wt. Fork Oil*	
Rear Shocks	φ	
Tires (size/nominal pressure)	Front: 2.50-18/23psi	Rear: 2.75-18/28psi
ELECTRICAL - Charging System (mfr) (type)	Mitsubishi	Flywheel Magneto FOT02772
No Load Voltage Adj. (AC & DC generators)	φ	
Max. Generator (Magneto) Output	N/A	
Field Coil (and/or) Charging Coil Resistance	Yellow: 0.28Ω / Green: .08Ω / Green Red: 0.37Ω	
Battery (mfr) (model) (rating)	G.S. or F.B.	6N4A-4D 6V4AH
Headlight/Taillight Ratings	6V25W/25W	6V5.3W
Ign. Coil Min. Spark Gap/Pri. Res./Sec. Res.	6mm 4.5Ω	6.0KΩ
Condenser Capacity	0.30μf	
Point Gap /Spark Plug (type/gap)	0.3 ~ 0.4mm/NGK B-8HS or Champion L-78/0.5 ~ 0.6mm	
Timing (advanced) (retarded)	1.8 ± 0.15mm BTDC/φ	

N/A = Information Not Available

*Available from Yamaha Parts Distributors, Inc.

φ = Does Not Apply to This Model

©YAMAHA INTERNATIONAL CORPORATION, BUENA PARK, CALIFORNIA 10/5/74 Page 1 of 1



TECHNICAL BULLETIN