

YAMAHA

PARTS LIST

MODEL RD250
MODEL RD350
Bj. 1973

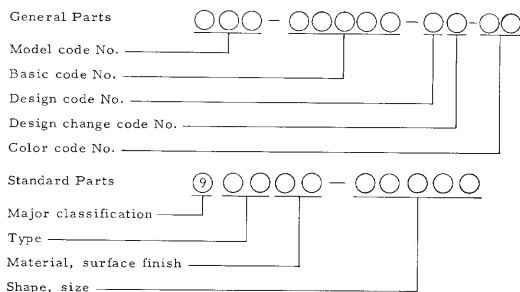


FOREWORD

This Parts List relates to the Parts in use for the YAMAHA SPORTS RD250, RD350. When you ordering replacement parts for RD250, RD350, refer to this Parts List and quote both parts numbers and part names correctly.

1. Structure of Part No.

Yamaha parts are divided largely into two categories; general parts and standard parts, and each part No. has the following structure:



2. How to Use this Parts List

- (1) Except for steel balls (whose size is indicated in inches), the size of all parts is indicated in millimeters in the following manner.

Pipe (rubber or vinyl) Inside diameter - length

O-ring Section area - inside diameter

Washer, shim, collar Inside diameter - outside diameter - thickness (length)

- (2) Parts, which are to be supplied in the form of assemblies, are listed with an indentation of one letter's space, and a dot (.) is put

against the name of each part. If any two different assemblies (e.g., right and left side components) consist of almost the same type components, these two assemblies are listed in two lines, and then the names of component parts are listed in the subsequent lines with an indentation as mentioned earlier. The quantity of parts is given in the following manner; that is, in the case of parts being the same in type between the right and left, a total quantity of parts is given. On the other hand, if the right and left side parts are different in type, the quantity of part(s) on each side is given.

Example

Description	Q'ty
CARBURETOR ASS'Y, left	1
CARBURETOR ASS'Y, right	1
. JET, pilot	2
. NOZZLE, main	2
.....	
. LEVER, starter, left	1
. LEVER, starter, right	1

(3) Key to Symbols

U.R.	Use size (thickness) and/or number as required
T	Number of teeth in a gear
V	Voltage for light bulbs
S	"S" type oil seal or "S" type circlip
SD	"SD" type oil seal
SO	"SO" type oil seal
SW	"SW" type oil seal
E	"E" type circlip
R	"R" type circlip
F/No.	Frame No. (Applicable machine No.)

- (4) The right and left in relation to parts are determined on the basis of the rider facing toward the front.
- (5) This Parts List is based on the model in the production line on Dec., 1, 1972. Accordingly, if any modifications which have been made to parts will be announced in the Yamaha Parts News. It is advisable that according to the Yamaha Parts News, You will make necessary corrections to the Parts List on hand to keep it up-to dated.

CONTENTS

ENGINE

Fig. 1	Cylinder Head • Cylinder	1
Fig. 2	Crankcase	3
Fig. 3	Crankcase Cover	5
Fig. 4	Crank • Piston	7
Fig. 5	Clutch	11
Fig. 6	Transmission	15
Fig. 7	Shifter 1	19
Fig. 8	Shifter 2	23
Fig. 9	Kick Starter	25
Fig. 10	Tachometer Gear	27
Fig. 11	Intake	29
Fig. 12	Carburetor	31
Fig. 13	Exhaust	37
Fig. 14	Oil Pump	39
Fig. 15	A.C. Generator	43

CHASSIS

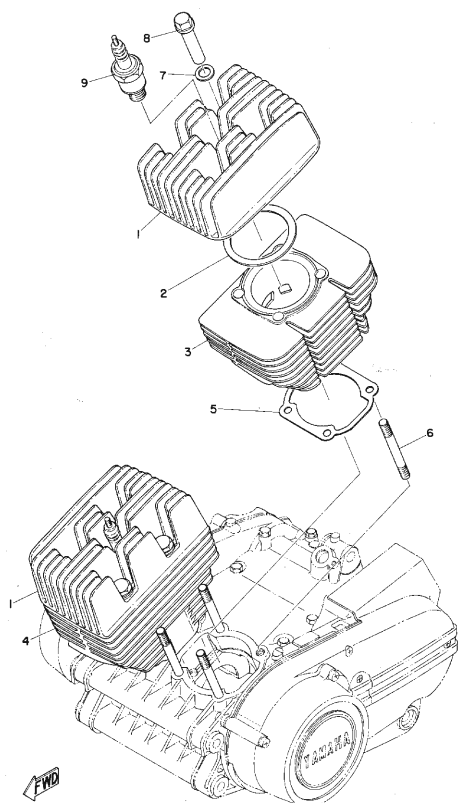
Fig. 16	Frame	49
Fig. 17	Side Cover • Tool Box • Battery Box	51
Fig. 18	Rear Arm • Rear Cushion • Chain Case	53
Fig. 19	Stand • Footrest • Brake Pedal	55
Fig. 20	Front Fender • Rear Fender	59
Fig. 21	Front Fork (RD 250)	63
Fig. 22	Front Fork (RD 350)	67
Fig. 23	Steering	71
Fig. 24	Handle • Wire	75
Fig. 25	Master Cylinder • Brake Hose (RD 350)	79
Fig. 26	Fuel Tank	83

Fig. 27	Oil Tank	87
Fig. 28	Seat	91
Fig. 29	Front Wheel (RD 250)	93
Fig. 30	Front Wheel (RD 350)	97
Fig. 31	Disk Brake • Caliper (RD 350)	101
Fig. 32	Rear Wheel	103
Fig. 33	Head Lamp	109
Fig. 34	Speedometer • Tachometer	111
Fig. 35	Tail Lamp	113
Fig. 36	Flasher Lamp	115
Fig. 37	Electrical	117

NUMERICAL INDEX

Fig. 1 CYLINDER HEAD · CYLINDER

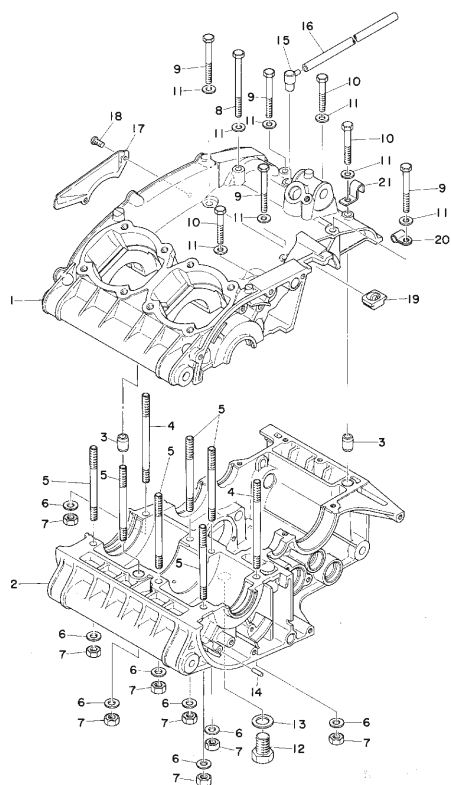
CYLINDER HEAD · CYLINDER



Ref. No.	Part No.	Description	Q'ty RD050 RD050	Applicable Machine No.	Remarks
1- 1	361-11111-01	HEAD, cylinder	2		
	360-11111-01	HEAD, cylinder	2		
1- 2	280-11181-01	GASKET, cylinder head	2		
	278-11181-01	GASKET, cylinder head	2		
1- 3	361-11311-00	CYLINDER, left	1		
	360-11311-00	CYLINDER, left	1		
1- 4	361-11321-00	CYLINDER, right	1		
	360-11321-00	CYLINDER, right	1		
1- 5	278-11351-00	GASKET, cylinder	2	2	
1- 6	276-11361-00	BOLT, holding	8		
	248-11361-00	BOLT, holding	8		
1- 7	278-11175-00	WASHER, plain (12.5-24-2)	8	8	
1- 8	278-11171-00	NUT, holding	8	8	
1- 9	94701-00041	PLUG, spark (B-8HS)	2	2	

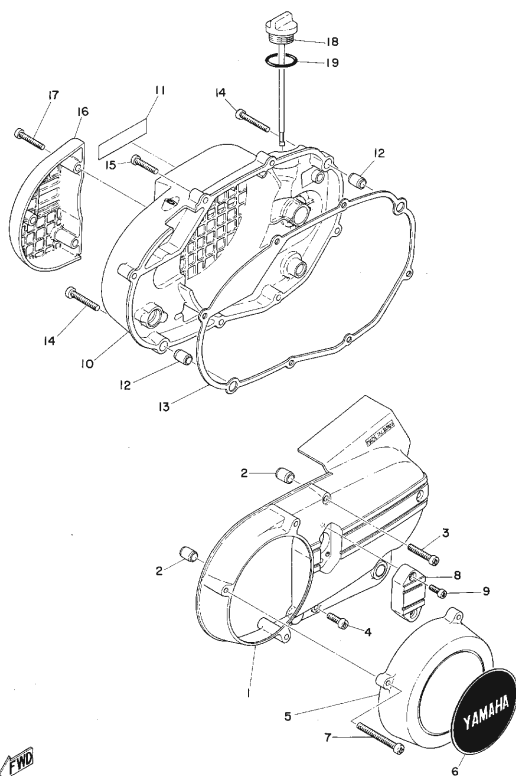
Fig. 2 CRANKCASE

CRANKCASE



Ref. No.	Part No.	Description	Q'ty RD050 RD050	Applicable Machine No.	Remarks
2- 0-1	278-15100-01	CRANKCASE ASS'Y	1	1	
2- 1	278-15111-01	CASE, crank upper	1	1	Not for sale
2- 2	278-15121-01	CASE, crank lower	1	1	Not for sale
2- 3	91810-05016	PIN, dowel (8.4-12-16)	2	2	
2- 4	256-15194-00	BOLT, crankcase stud 3	2	2	
2- 5	256-15193-00	BOLT, crankcase stud 2	6	6	
2- 6	92901-08200	WASHER, plain	8	8	
2- 7	98803-08200	NUT	8	8	
2- 8	91101-06090	BOLT	1	1	
2- 9	91101-06055	BOLT	4	4	
2-10	91101-06045	BOLT	3	3	
2-11	92901-06200	WASHER, plain	8	8	
2-12	214-15351-00	PLUG, drain	1	1	
2-13	137-15353-00	GASKET, drain plug (14-21-15)	1	1	
2-14	93603-14026	PIN, dowel (3-14)	1	1	
2-15	120-15371-00	BREATHER	1	1	
2-16	248-15373-00	PIPE, breather (5-150)	1	1	
2-17	278-15492-00	COVER	1	1	
2-18	98501-05010	SCREW, panhead	2	2	
2-19	278-15441-00	HOLDER, clutch wire	1	1	
2-20	164-82594-00	CLAMP	1	1	
2-21	278-15485-00	CLAMP	1	1	

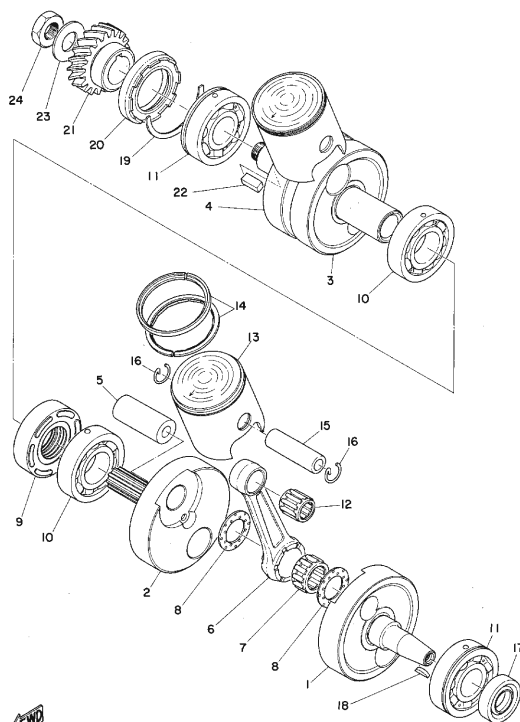
Fig. 3 CRANKCASE COVER



CRANKCASE COVER

Ref. No.	Part No.	Description	Q'ty RD250 RD350	Applicable Machine No.	Remarks
3- 1	360-15411-00	COVER, crankcase left	1	1	
3- 2	91810-05016	PIN, dowel (8.4-12-16)	2	2	
3- 3	92506-06035	SCREW, panhead	2	2	
3- 4	92506-06020	SCREW, panhead	1	1	
3- 5	360-15415-00	COVER, generator	1	1	
3- 6	360-15425-00	COVER	1	1	
3- 7	92506-06060	SCREW, panhead	3	3	
3- 8	360-15417-00	COVER, cap	1	1	
3- 9	98506-05020	SCREW, panhead	2	2	
3-10	360-15421-00	COVER, crankcase right	1	1	
3-11	360-15435-00	EMBLEM	1	1	
3-12	91810-05016	PIN, dowel (8.4-12-16)	2	2	
3-13	278-15461-00	GASKET, crankcase cover right	1	1	
3-14	92506-06040	SCREW, panhead	2	2	
3-15	92506-06030	SCREW, panhead	6	6	
3-16	360-15416-00	COVER, oil pump	1	1	
3-17	92506-06035	SCREW, panhead	3	3	
3-18	360-15363-00	PLUG, oil	1	1	
3-19	93210-27194	O-RING (2.5-27)	1	1	

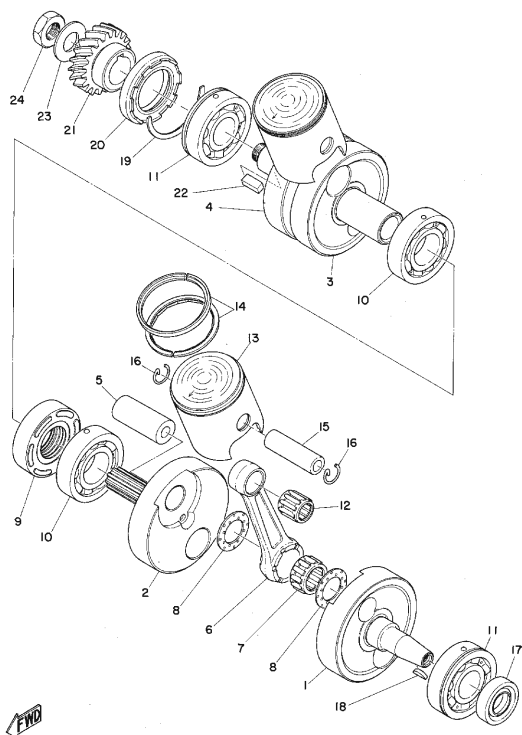
Fig. 4 CRANK · PISTON



CRANK · PISTON

Ref. No.	Part No.	Description	Q'ty RD250 RD350	Applicable Machine No.	Remarks
4- 0-1	278-11400-00	CRANK ASS'Y	1	1	
4- 1	278-11412-00	CRANK 1, left	1	1	
4- 2	278-11422-00	CRANK 1, right	1	1	
4- 3	278-11432-00	CRANK 2, left	1	1	
4- 4	278-11442-00	CRANK 2, right	1	1	
4- 5	278-11681-00	PIN, crank	2	2	
4- 6	278-11651-00	ROD, connecting	2	2	
4- 7	93310-42231	BEARING, con-rod big end (22-28-15.8)	2	2	
4- 8	164-11685-00	WASHER, crank pin	4	4	
4- 9	278-11515-00	SEAL, labyrinth	1	1	
4-10	93306-20604	BEARING (6206C3 special)	2	2	
4-11	93306-30508	BEARING (6305C3 special)	2	2	
4-12	93310-21680	BEARING, con-rod small end (16-20-19)	2	2	
	93310-21679	BEARING, con-rod small end (16-20-22)	2	2	
4-13	361-11631-00-96	PISTON (53.96mm STD)	U.R.		
	361-11631-00-98	PISTON (53.98mm STD)	2		
	361-11635-00	PISTON (54.25mm 1st O.S)	2		Alternate Parts
	361-11636-00	PISTON (54.50mm 2nd O.S)	2		Alternate Parts
	360-11631-00-96	PISTON (63.96mm STD)	U.R.		
	360-11631-00-98	PISTON (63.98mm STD)	2		
	360-11635-00	PISTON (64.25mm 1st O.S)	2		Alternate Parts
	360-11636-00	PISTON (64.50mm 2nd O.S)	2		Alternate Parts

Fig. 4 CRANK · PISTON



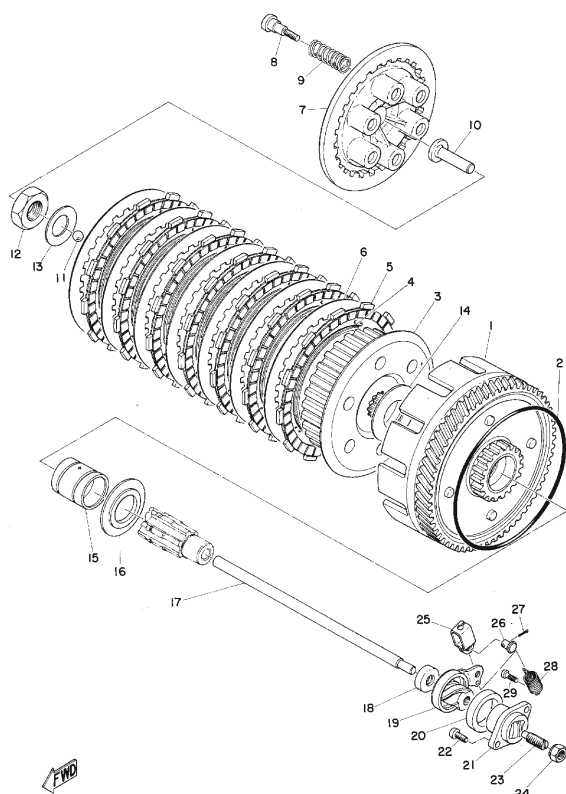
CRANK · PISTON

Ref. No.	Part No.	Description	Q'ty R1050 R1050	Applicable Machine No.	Remarks
4-14	361-11610-01	PISTON RING SET (STD)	2s		
	361-11610-11	PISTON RING SET (1st O.S.)	2s		Alternate Parts
	361-11610-21	PISTON RING SET (2nd O.S.)	2s		Alternate Parts
	360-11610-01	PISTON RING SET (STD)	2s		
	360-11610-11	PISTON RING SET (1st O.S.)	2s		Alternate Parts
	360-11610-21	PISTON RING SET (2nd O.S.)	2s		Alternate Parts
4-15	280-11633-00	PIN, piston	2		
	278-11633-00	PIN, piston	2		
4-16	137-11634-00	CLIP, piston pin	4	4	
4-17	93103-20076	OIL SEAL (SW-20-40-10 special)	1	1	
4-18	150-11545-00	KEY, woodruff	1	1	
4-19	278-17424-00	CIRCLIP	1	1	
4-20	93103-40077	OIL SEAL (SW-40-62-10 special)	1	1	
4-21	280-16111-00	GEAR, drive (21T)	1		
	278-16111-00	GEAR, drive (23T)	1		
4-22	278-11546-00	KEY, woodruff	1	1	
4-23	214-16119-00	SPRING, belleville	1	1	
4-24	168-11555-00	NUT, crank shaft	1	1	
ALTERNATE PARTS					
4- 0-2	361-11630-00	PISTON ASS'Y (STD)	2s		
	361-11630-10	PISTON ASS'Y (1st O.S.)	2s		
	361-11630-20	PISTON ASS'Y (2nd O.S.)	2s		
	360-11630-00	PISTON ASS'Y (STD)	2s		
	360-11630-10	PISTON ASS'Y (1st O.S.)	2s		
	360-11630-20	PISTON ASS'Y (2nd O.S.)	2s		

YAMAHA MOTOR CO., LTD.

10

Fig. 5 CLUTCH



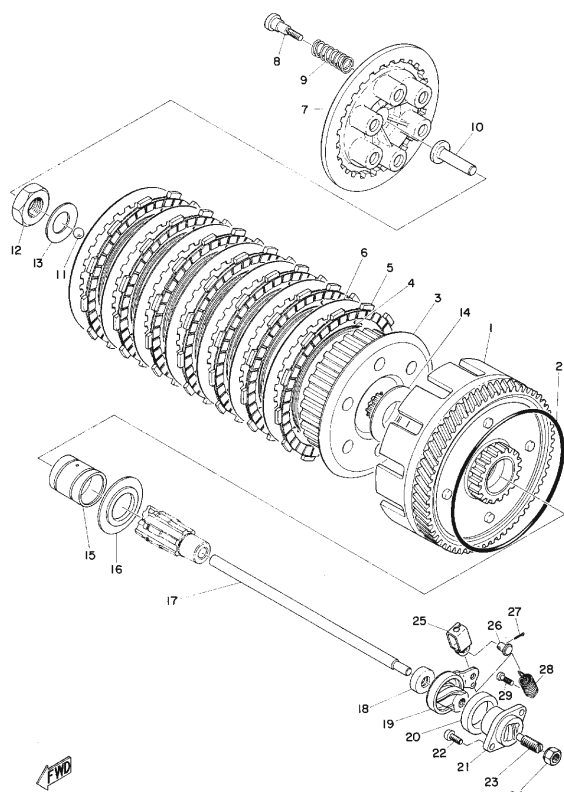
CLUTCH

Ref. No.	Part No.	Description	Q'ty R1050 R1050	Applicable Machine No.	Remarks
5- 0-1	280-16301-00	CLUTCH ASS'Y	1		
	278-16301-00	CLUTCH ASS'Y	1		
5- 1	280-16150-00	PRIMARY DRIVEN GEAR COMP. (68T)	1		
	278-16150-01	PRIMARY DRIVEN GEAR COMP. (66T)	1		
5- 2	93211-15149	O-RING (5.7-114.6)	1	1	
5- 3	360-16370-00	CLUTCH BOSS ASS'Y	1	1	
5- 4	278-16367-00	RING, cushion	7	7	
5- 5	360-16321-00	PLATE, friction	7	7	
5- 6	360-16325-00	PLATE, clutch	7	7	
5- 7	360-16351-00	PLATE, pressure	1	1	
5- 8	137-16337-01	SCREW, spring	6	6	
5- 9	183-16333-70	SPRING, clutch	6	6	
5-10	174-16356-00	ROD, push	1	1	
5-11	93505-16006	BALL (5/6 inch)	1	1	
5-12	156-16174-00	NUT, lock	1	1	
5-13	214-16119-00	SPRING, belleville	1	1	
5-14	170-16164-00	PLATE, thrust 2 (25-50-2)	1	1	
5-15	278-16181-01	SPACER	1	1	
5-16	278-16154-00	PLATE, thrust 1	1	1	
5-17	237-16357-01	ROD, push	1	1	
5-18	237-15389-00	SEAL, push rod	1	1	
5-19	360-16340-00	PUSH LEVER ASS'Y	1	1	
5-20	214-16347-01	SEAL, dust	1	1	

YAMAHA MOTOR CO., LTD.

12

Fig. 5 CLUTCH



13

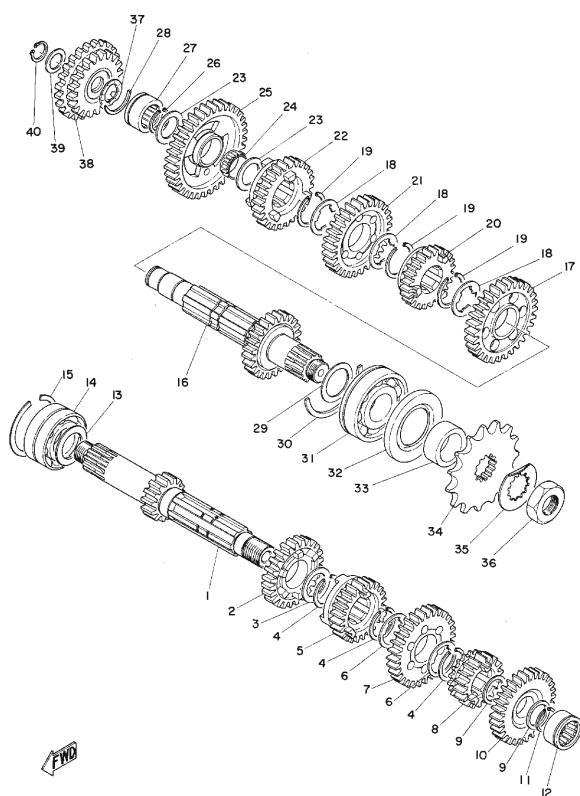
CLUTCH

Ref. No.	Part No.	Description	Q'ty		Applicable Machine No.	Remarks
			RD350	RD350		
5-21	256-16396-01	HOUSING, push screw	1	1		
5-22	98501-05012	SCREW, panhead	2	2		
5-23	256-16343-01	SCREW, adjusting	1	1		
5-24	214-16344-00	NUT, adjusting	1	1		
5-25	214-16389-00	JOINT	1	1		
5-26	214-16379-00	PIN	1	1		
5-27	91401-10010	PIN, cotter	1	1		
5-28	360-16345-00	SPRING, return	1	1		
5-29	132-16346-00	HOCK, spring	1	1		

YAMAHA MOTOR CO., LTD.

14

Fig. 6 TRANSMISSION



15

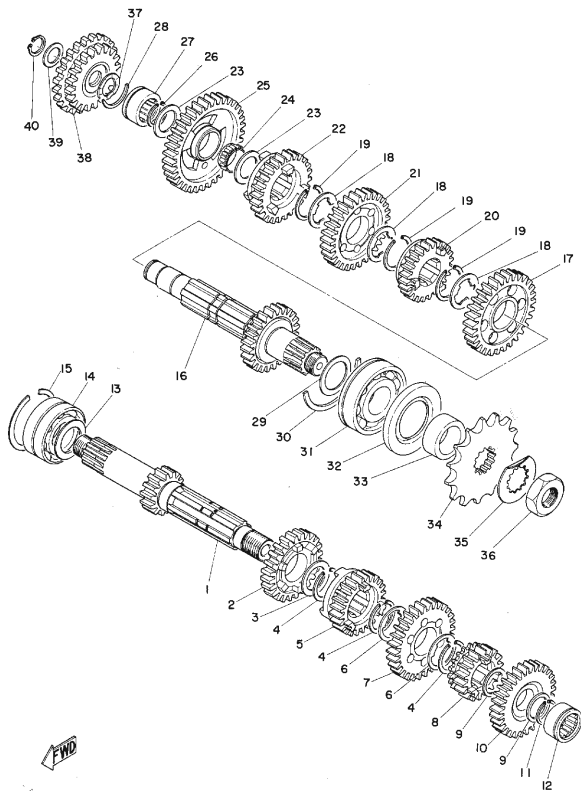
TRANSMISSION

Ref. No.	Part No.	Description	Q'ty		Applicable Machine No.	Remarks
			RD350	RD350		
6-1	360-17411-00	AXLE, main (14T)	1	1		
6-2	360-17141-00	GEAR, 4th pinion (25T)	1	1		
6-3	152-17226-00	WASHER, gear hold 2 (25-32-1)	1	1		
6-4	93440-25008	CIRCLIP (25° special)	3	3		
6-5	360-17131-00	GEAR, 3rd pinion (22T)	1	1		
6-6	328-17216-00	WASHER, gear hold 1	2	2		
6-7	360-17161-00	GEAR, 6th pinion (28T)	1	1		
6-8	360-17121-00	GEAR, 2nd pinion (18T)	1	1		
6-9	132-17216-00	WASHER, gear hold (22-25-1)	2	2		
6-10	360-17151-00	GEAR, 5th pinion (27T)	1	1		
6-11	93410-20009	CIRCLIP (S-20)	1	1		
6-12	93311-22005	BEARING (20-30-15)	1	1		
6-13	168-17428-01-03	SHIM, drive axle (25-34-0.3)	3	3		U.R.U.R
	168-17428-01-05	SHIM, drive axle (25-34-0.5)	3	3		
6-14	93305-20502	BEARING (25-52-20.6)	1	1		
6-15	93440-52009	CIRCLIP	1	1		
6-16	360-17420-00	DRIVE AXLE COMP. (24T)	1	1		
6-17	360-17221-00	GEAR, 2nd wheel (32T)	1	1		
6-18	328-17216-00	WASHER, gear hold 1	3	3		
6-19	93440-25008	CIRCLIP (25° special)	3	3		
6-20	360-17261-00	GEAR, 6th wheel (22T)	1	1		
6-21	360-17231-00	GEAR, 3rd wheel (29T)	1	1		
6-22	360-17241-00	GEAR, 4th wheel (26T)	1	1		
6-23	328-17116-00	WASHER, gear hold (20.2-30-1)	2	2		

YAMAHA MOTOR CO., LTD.

16

Fig. 6 TRANSMISSION



17

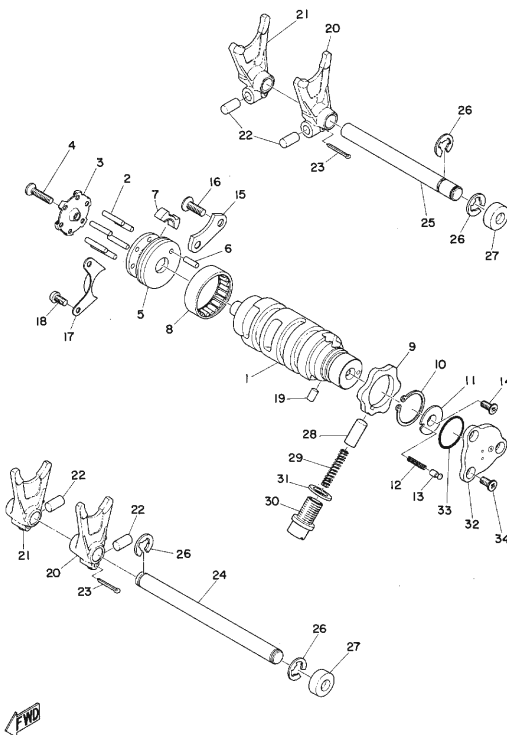
TRANSMISSION

Ref. No.	Part No.	Description	Q'ty RD250 RD350	Applicable Machine No.	Remarks
6-24	93310-22057	BEARING (20-24-10)	1	1	
6-25	360-17211-00	GEAR, 1st wheel (36T)	1	1	
6-26	93410-20009	CIRCLIP (S-20)	1	1	
6-27	93311-42006	BEARING (20-33-15)	1	1	
6-28	278-17425-00	CIRCLIP	1	1	
6-29	168-17428-01-03	SHIM, drive axle (25-34-0.3)	1	U.R. U.R.	
	168-17428-01-05	SHIM, drive axle (25-34-0.5)	1	U.R. U.R.	
6-30	278-17424-00	CIRCLIP	1	1	
6-31	93306-30504	BEARING (5305N special)	1	1	
6-32	93102-35054	OIL SEAL (SD-35-62-6)	1	1	
6-33	169-17462-00	COLLAR, distance (25-35-17.5)	1	1	
6-34	168-17461-40	SPROCKET (14T)	1	U.R. U.R.	
	168-17461-50	SPROCKET (15T)	1	U.R. U.R.	STD(RD250, RD350)
	168-17461-60	SPROCKET (16T)	1	U.R. U.R.	
6-35	156-17464-01	WASHER, lock	1	1	
6-36	152-17463-00	NUT, lock	1	1	
6-37	137-15643-00	WASHER, wave	1	1	
6-38	278-15650-00	IDLER GEAR ASS'Y (22T & 27T)	1	1	
6-39	164-17417-00-10	SHIM, main axle (15.2-20-1)	1	1	
6-40	93410-15005	CIRCLIP (S-15)	1	1	

YAMAHA MOTOR CO., LTD.

18

Fig. 7 SHIFTER 1



19

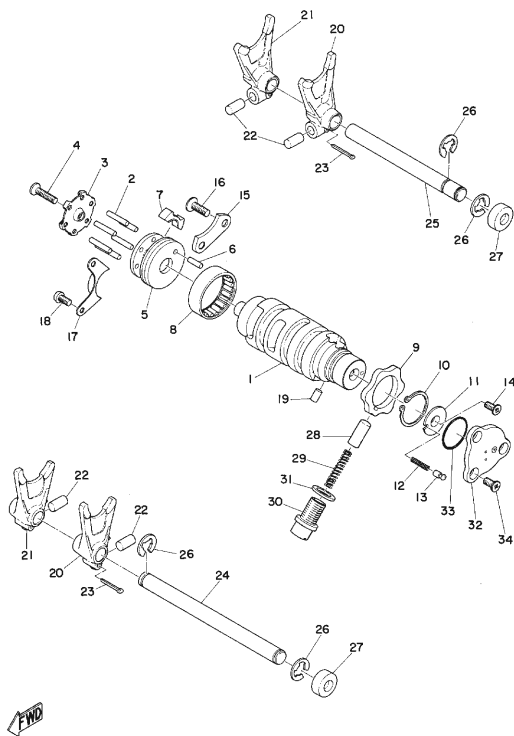
SHIFTER 1

Ref. No.	Part No.	Description	Q'ty RD250 RD350	Applicable Machine No.	Remarks
7- 1	360-18541-00	CAM, shift	1	1	
7- 2	93604-22050	PIN, dowel (4-21.8)	6	6	
7- 3	328-18561-00	PLATE, side 1	1	1	
7- 4	98701-05020	SCREW, flathead	1	1	
7- 5	328-18185-00	SEGMENT	1	1	
7- 6	93604-14012	PIN, dowel	1	1	
7- 7	328-18352-10	PLATE, pawl	1	1	
7- 8	93315-23612	BEARING (36-46-12)	1	1	
7- 9	360-18141-01	PLATE, stopper	1	1	
7-10	93410-30012	CIRCLIP (S-30)	1	1	
7-11	278-18566-00	PLATE, side 2	1	1	
7-12	278-18545-00	SPRING	1	1	
7-13	278-18342-00	POINT, neutral	1	1	
7-14	98701-05012	SCREW, flathead	1	1	
7-15	328-18562-00	PLATE, stopper 2	1	1	
7-16	92701-06015	SCREW, flathead	2	2	
7-17	328-18179-00	GUIDE, change lever	1	1	
7-18	98501-05010	SCREW, panhead	2	2	
7-19	93604-08071	PIN, dowel (4-8)	1	1	
7-20	328-18511-00	FORK, shift 1	2	2	
7-21	328-18512-00	FORK, shift 2	2	2	
7-22	278-18552-00	PIN, cam follower	4	4	
7-23	91401-25020	PIN, cotter	4	4	

YAMAHA MOTOR CO., LTD.

20

Fig. 7 SHIFTER 1



21

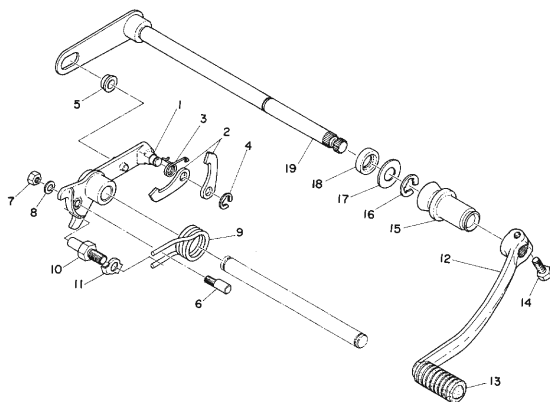
SHIFTER 1

Ref.No.	Part No.	Description	Q'ty RD050 RD056	Applicable Machine No.	Remarks
7-24	278-18531-00	BAR, shift fork guide 1	1	1	
7-25	278-18535-00	BAR, shift fork guide 2	1	1	
7-26	93430-10016	CIRCLIP (E-10)	4	4	
7-27	278-18149-00	PLUG, blind	2	2	
7-28	278-18547-02	STOPPER, cam	1	1	
7-29	278-18557-00	SPRING, cam stopper	1	1	
7-30	278-18577-03	SCREW, spring	1	1	
7-31	137-15353-00	GASKET, drain plug (14-21-1.5)	1	1	
7-32	278-82540-01	NEUTRAL SWITCH ASS'Y	1	1	
7-33	93210-29147	O-RING (2.4-29.4)	1	1	
7-34	98701-05020	SCREW, flathead	3	3	

YAMAHA MOTOR CO., LTD.

22

Fig. 8 SHIFTER 2



23

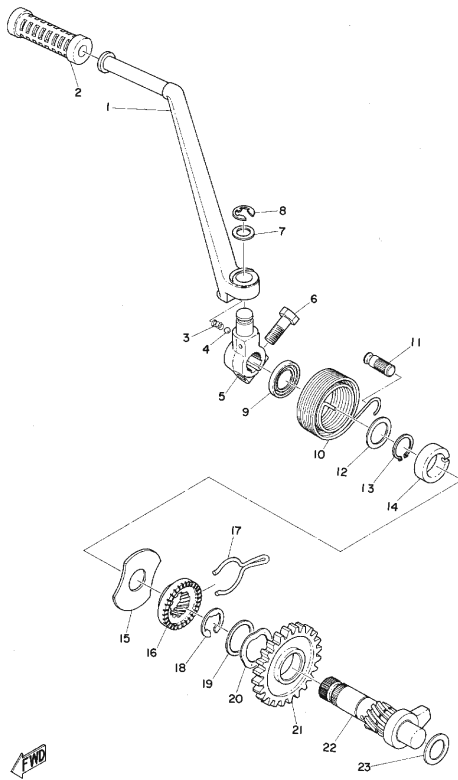
SHIFTER 2

Ref.No.	Part No.	Description	Q'ty RD050 RD056	Applicable Machine No.	Remarks
8-1	328-18128-00	BRACKET	1	1	
8-2	328-18151-00	LEVER, change 3	2	2	
8-3	214-18123-00	SPRING	1	1	
8-4	93430-07012	CIRCLIP (E-7)	1	1	
8-5	214-18178-00	ROLLER, change lever	1	1	
8-6	214-18186-00	SCREW, adjusting	1	1	
8-7	98801-06100	NUT	1	1	
8-8	92901-06100	WASHER, spring	1	1	
8-9	278-18124-00	SPRING, shaft return	1	1	
8-10	278-18127-00	STOPPER, screw	1	1	
8-11	214-18139-02	WASHER, lock	1	1	
8-12	278-18111-00-93	PEDAL, change	1	1	
8-13	132-18113-01	COVER, change pedal	1	1	
8-14	91101-06020	BOLT	1	1	
8-15	278-18131-00	BOOT, sealing	1	1	
8-16	93430-10016	CIRCLIP (E-10)	1	1	
8-17	132-18137-00	WASHER, change axle (12.1-26-1.6)	1	1	
8-18	93101-12004	OIL SEAL (S-21-22-5)	1	1	
8-19	278-18101-01	CHANGE SHAFT ASS'Y	1	1	

YAMAHA MOTOR CO., LTD.

24

Fig.9 KICK STARTER



25

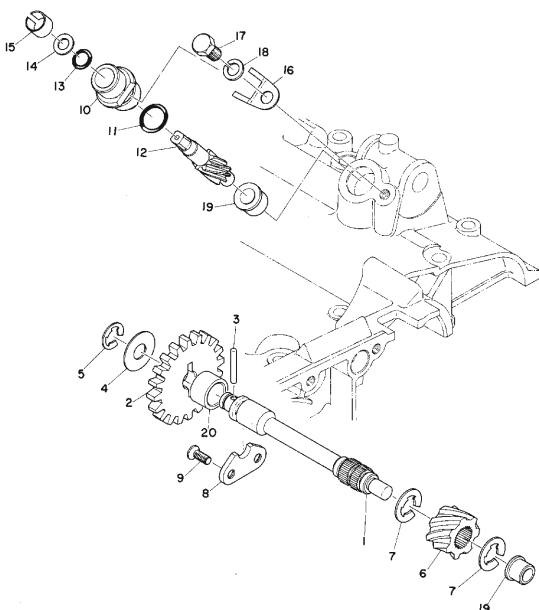
KICK STARTER

Ref. No.	Part No.	Description	Q'ty RD250 RD250	Applicable Machine No.	Remarks
9- 1	278-15611-00-93	CRANK, kick	1	1	
9- 2	156-15618-01	COVER, kick lever	1	1	
9- 3	278-15622-00	SPRING, boss stopper	1	1	
9- 4	93507-32009	BALL (7/32 inch)	1	1	
9- 5	278-15621-00	BOSS, kick crank	1	1	
9- 6	97101-08030	BOLT	1	1	
9- 7	278-15613-00	WASHER (15.5-24-1.5)	1	1	
9- 8	93430-10016	CIRCLIP (E-10)	1	1	
9- 9	93104-20007	OIL SEAL (50-20-30-4.5)	1	1	
9-10	278-15665-00	SPRING, kick	1	1	
9-11	248-15668-00	STOPPER, kick spring	1	1	
9-12	132-17216-00	WASHER, gear hold (20-25-1)	1	1	
9-13	93410-20009	CIRCLIP (S-20)	1	1	
9-14	278-15666-00	SPACER	1	1	
9-15	278-15676-00	COVER, spring	1	1	
9-16	278-15671-00	WHEEL, ratchet	1	1	
9-17	278-15687-00	CLIP	1	1	
9-18	93440-25008	CIRCLIP (25° special)	1	1	
9-19	152-17226-00	WASHER, gear hold (25-32-1)	1	1	
9-20	278-15643-01	WASHER, wave	1	1	
9-21	278-15641-00	GEAR, kick (27T)	1	1	
9-22	278-15660-01	KICK AXLE ASS'Y	1	1	
9-23	136-17417-00-10	SHIM (17.2-28-1)	1	1	

YAMAHA MOTOR CO., LTD.

26

Fig.10 TACHOMETER GEAR



27

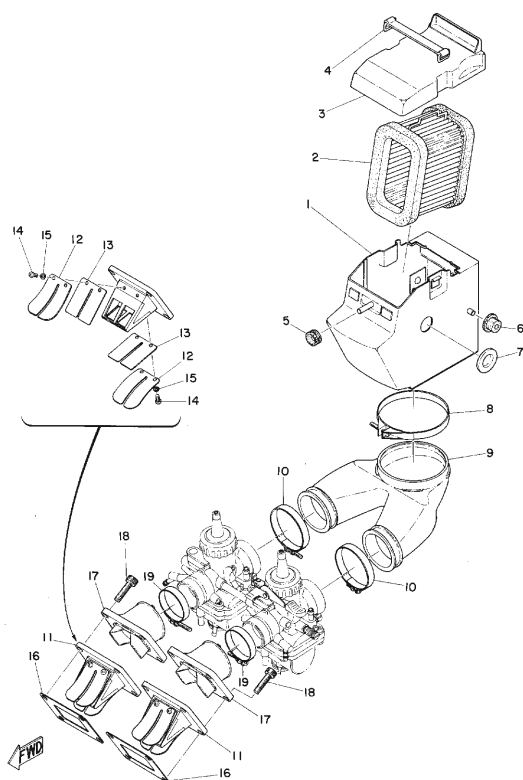
TACHOMETER GEAR

Ref. No.	Part No.	Description	Q'ty RD250 RD250	Applicable Machine No.	Remarks
10- 1	278-17861-00	AXLE	1	1	
10- 2	280-17851-00	GEAR, primary	1	1	
10- 3	93603-22028	GEAR, primary	1	1	
10- 4	102-18138-00	PIN, dowel (3-21.8)	1	1	
10- 5	93430-08006	WASHER (10.2-24-1)	1	1	
10- 6	278-17831-00	CIRCLIP (E-8)	1	1	
10- 7	278-17831-00	GEAR, drive	1	1	
10- 8	93430-10016	CIRCLIP (E-10)	2	2	
10- 9	278-17812-00	STOPPER	1	1	
10-10	98701-05012	SCREW, flathead	2	2	
10-11	214-17811-01	HOUSING	1	1	
10-12	93210-13016	O-RING (1.8-13)	1	1	
10-13	214-17841-01	GEAR, driven	1	1	
10-14	93210-07100	O-RING (2.2-7.2)	1	1	
10-15	214-17847-00	SHIM (7.5-10.8-0.4)	1	1	
10-16	214-17815-00	BUSHING	1	1	
10-17	214-17812-00	STOPPER	1	1	
10-18	91201-06010	BOLT	1	1	
10-19	92901-06100	WASHER, spring	1	1	
10-20	214-17843-00	BUSHING	2	2	
10-21	278-17833-00	BUSHING	1	1	

YAMAHA MOTOR CO., LTD.

28

Fig. 11 INTAKE



29

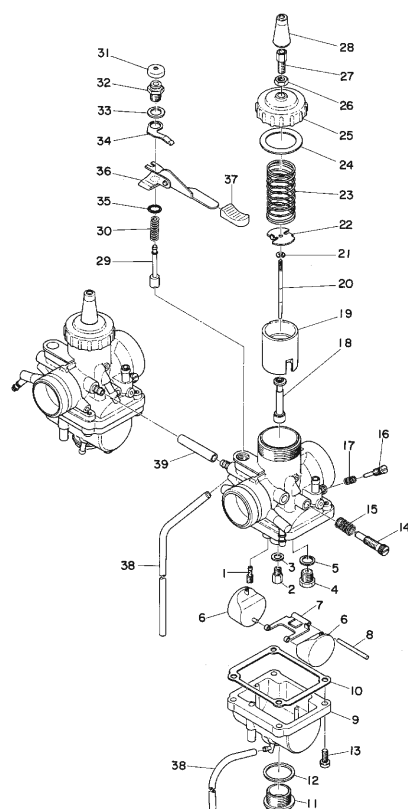
INTAKE

Ref. No.	Part No.	Description	Q'ty RD250 RD350	Applicable Machine No.	Remarks
11- 1	360-14411-00	CASE, air cleaner	1	1	
11- 2	278-14431-00	ELEMENT	1	1	
11- 3	278-14412-01	CAP, case	1	1	
11- 4	278-14459-00	HOLDER	1	1	
11- 5	214-21746-00	DAMPER, tool box	1	1	
11- 6	278-14426-00	DAMPER 2	2	2	
11- 7	360-14435-00	GROMMET	2	2	
11- 8	360-14456-00	BAND	1	1	
11- 9	360-14453-00	JOINT	1	1	
11-10	278-14455-00	BAND	2	2	
11-11	345-13610-70	REED VALVE ASS'Y	2	2	
11-12	345-13616-70	STOPPER, reed valve	4	4	
11-13	345-13613-70	VALVE, reed	4	4	
11-14	98512-03008	SCREW, panhead	8	8	
11-15	92901-03100	WASHER, spring	8	8	
11-16	314-13621-01	PACKING, valve seat	2	2	
11-17	345-13565-71	JOINT	2	2	
11-18	91306-06025	BOLT	8	8	
11-19	304-14455-70	BAND	2	2	

YAMAHA MOTOR CO., LTD.

30

Fig. 12 CARBURETOR



31

CARBURETOR

Ref. No.	Part No.	Description	Q'ty RD250 RD350	Applicable Machine No.	Remarks
12- 0-1	361-14101-00	CARBURETOR ASS'Y, left	1		Black
	360-14101-00	CARBURETOR ASS'Y, left	1		Black
12- 0-2	361-14102-00	CARBURETOR ASS'Y, right	1		Black
	360-14102-00	CARBURETOR ASS'Y, right	1		Black
12- 1	193-14142-30	JET, pilot (#30)	2		
	193-14142-25	JET, pilot (#25)	2		
12- 2	137-14143-22	JET, main (#110)	2		
	137-14143-24	JET, main (#120)	2		STD(RD250)
	137-14143-26	JET, main (#130)	2		U.R. U.R.
	137-14143-28	JET, main (#140)	2		STD(RD350)
	137-14143-30	JET, main (#150)	2		
12- 3	137-14153-00	WASHER, main jet	2	2	
12- 4	168-14190-25	VALVE SEAT ASS'Y (#2.5)	2	2	
12- 5	214-14195-00	WASHER, valve seat	2	2	
12- 6	278-14185-00	FLOAT	4	4	
12- 7	280-14187-00	ARM, float	2	2	
12- 8	137-14186-00	PIN, float	2	2	
12- 9	360-14181-00-33	BODY, float chamber left	1	1	
12- 9-1	360-14183-00-33	BODY, float chamber right	1	1	
12-10	360-14184-00	GASKET, float chamber	2	2	
12-11	278-14115-00-33	PLUG, screw	2	2	
12-12	278-14117-00	WASHER, screw plug	2	2	
12-13	308-14567-00-33	SCREW, panhead	8	8	
12-14	204-14122-00-33	SCREW, throttle	2	2	
12-15	127-14134-00	SPRING, air adjusting	2	2	

YAMAHA MOTOR CO., LTD.

32